

NOTE: BEARING CONDITIONS SHALL BE OBSERVED BY THE SITE GEOTECHNICAL ENGINEER. BASE DIMENSIONS MAY BE INCREASED TO ADDRESS DEFICIENT SOIL BEARING CONDITIONS.

24-44 WALL BASE

NOT TO SCALE

DISCLAIMER:

These typical details are preliminary and conceptual in nature. They are provided for general information purposes only. Anyone making use of these details and related information does so at their own risk and assumes all liability for such use. Site specific design should be performed by a licensed Professional Engineer based on actual site conditions, materials, and local practices.

Stone Strong LLC retains all common law, statutory, and other reserved rights to these drawings including the copyright. Limited license is granted to copy, reproduce, or modify the details to prepare construction drawings for Stone Strong retaining walls. Stone Strong LLC makes no warranties, either expressed or implied, of merchantability or fitness for any particular purpose, and accepts no responsibility for the accuracy, suitability, or completeness of information contained herein.

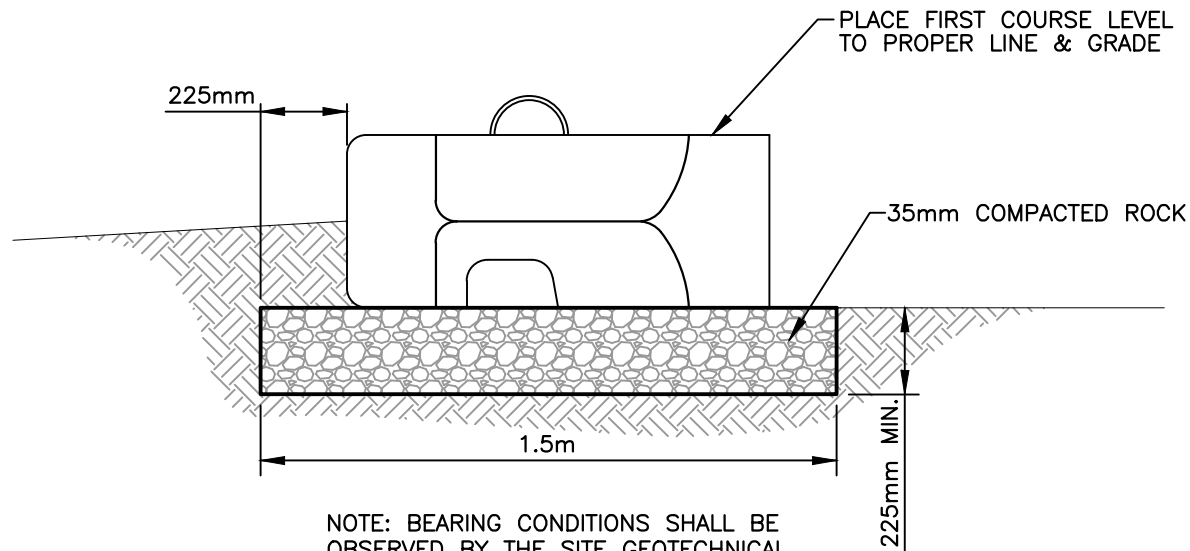


www.stonestrong.com

PROJECT

TYPICAL DETAILS
STONE STRONG SYSTEMS

DATE: 4/18/23 FILE: 01_24-44.Base



NOTE: BEARING CONDITIONS SHALL BE OBSERVED BY THE SITE GEOTECHNICAL ENGINEER. BASE DIMENSIONS MAY BE INCREASED TO ADDRESS DEFICIENT SOIL BEARING CONDITIONS.

6-44 WALL BASE

NOT TO SCALE

DISCLAIMER:

These typical details are preliminary and conceptual in nature. They are provided for general information purposes only. Anyone making use of these details and related information does so at their own risk and assumes all liability for such use. Site specific design should be performed by a licensed Professional Engineer based on actual site conditions, materials, and local practices.

Stone Strong LLC retains all common law, statutory, and other reserved rights to these drawings including the copyright. Limited license is granted to copy, reproduce, or modify the details to prepare construction drawings for Stone Strong retaining walls. Stone Strong LLC makes no warranties, either expressed or implied, of merchantability or fitness for any particular purpose, and accepts no responsibility for the accuracy, suitability, or completeness of information contained herein.



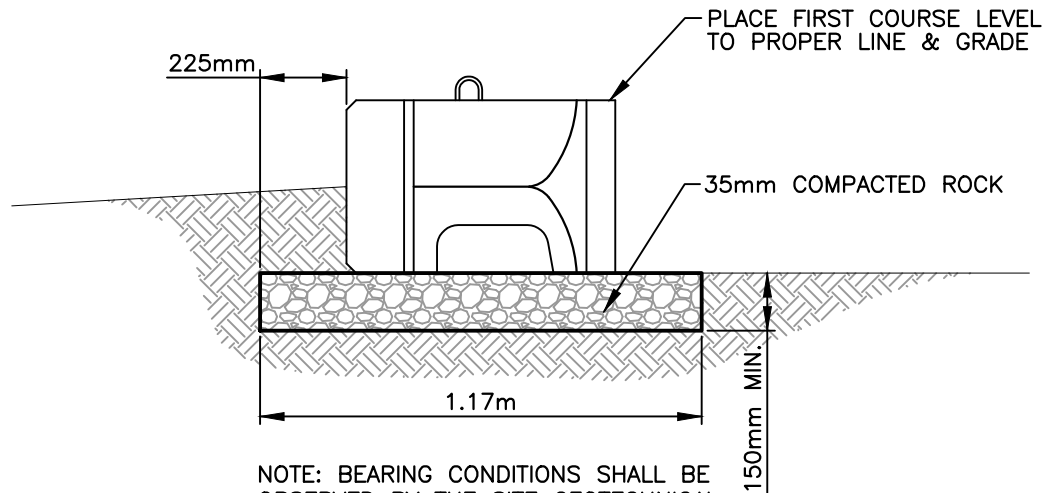
www.stonestrong.com

PROJECT

TYPICAL DETAILS
STONE STRONG SYSTEMS

DATE: 4/18/23

FILE: 02_6-44.Base



NOTE: BEARING CONDITIONS SHALL BE OBSERVED BY THE SITE GEOTECHNICAL ENGINEER. BASE DIMENSIONS MAY BE INCREASED TO ADDRESS DEFICIENT SOIL BEARING CONDITIONS.

6-28 WALL BASE

NOT TO SCALE

CHECK ON AVAILABILITY OF ALL UNITS w/LOCAL PRODUCER/DEALER. SOME UNITS MAY HAVE LIMITED AVAILABILITY.

DISCLAIMER:

These typical details are preliminary and conceptual in nature. They are provided for general information purposes only. Anyone making use of these details and related information does so at their own risk and assumes all liability for such use. Site specific design should be performed by a licensed Professional Engineer based on actual site conditions, materials, and local practices.

Stone Strong LLC retains all common law, statutory, and other reserved rights to these drawings including the copyright. Limited license is granted to copy, reproduce, or modify the details to prepare construction drawings for Stone Strong retaining walls. Stone Strong LLC makes no warranties, either expressed or implied, of merchantability or fitness for any particular purpose, and accepts no responsibility for the accuracy, suitability, or completeness of information contained herein.

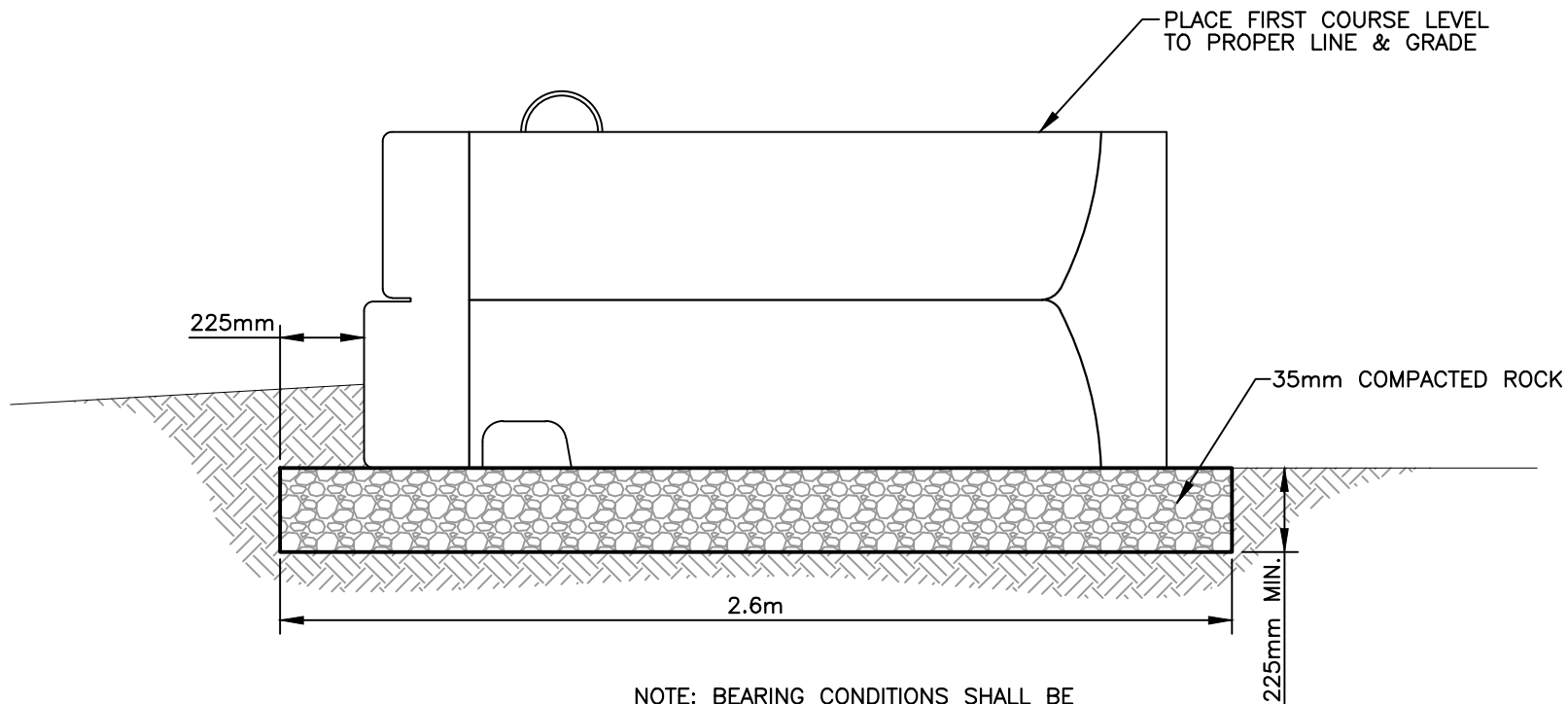


www.stonestrong.com

PROJECT

TYPICAL DETAILS
STONE STRONG SYSTEMS

DATE: 4/18/23 FILE: 03_6-28.Base



NOTE: BEARING CONDITIONS SHALL BE OBSERVED BY THE SITE GEOTECHNICAL ENGINEER. BASE DIMENSIONS MAY BE INCREASED TO ADDRESS DEFICIENT SOIL BEARING CONDITIONS.

24-86 WALL BASE

NOT TO SCALE

CHECK ON AVAILABILITY OF ALL UNITS w/LOCAL PRODUCER/DEALER. SOME UNITS MAY HAVE LIMITED AVAILABILITY.

DISCLAIMER:

These typical details are preliminary and conceptual in nature. They are provided for general information purposes only. Anyone making use of these details and related information does so at their own risk and assumes all liability for such use. Site specific design should be performed by a licensed Professional Engineer based on actual site conditions, materials, and local practices.

Stone Strong LLC retains all common law, statutory, and other reserved rights to these drawings including the copyright. Limited license is granted to copy, reproduce, or modify the details to prepare construction drawings for Stone Strong retaining walls. Stone Strong LLC makes no warranties, either expressed or implied, of merchantability or fitness for any particular purpose, and accepts no responsibility for the accuracy, suitability, or completeness of information contained herein.

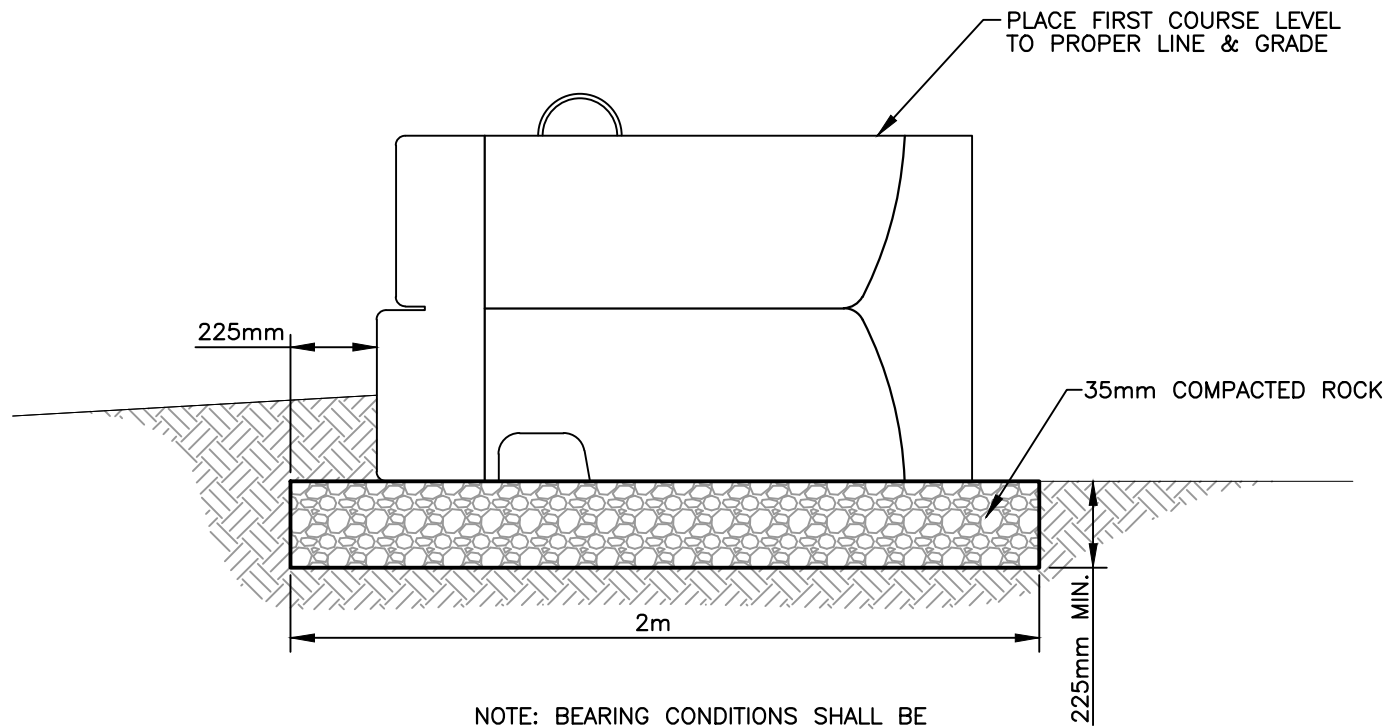


www.stonestrong.com

PROJECT

TYPICAL DETAILS
STONE STRONG SYSTEMS

DATE: 4/18/23 FILE: 04_24-86.Base



NOTE: BEARING CONDITIONS SHALL BE OBSERVED BY THE SITE GEOTECHNICAL ENGINEER. BASE DIMENSIONS MAY BE INCREASED TO ADDRESS DEFICIENT SOIL BEARING CONDITIONS.

24-62 WALL BASE

NOT TO SCALE

CHECK ON AVAILABILITY OF ALL UNITS w/LOCAL PRODUCER/DEALER. SOME UNITS MAY HAVE LIMITED AVAILABILITY.

DISCLAIMER:

These typical details are preliminary and conceptual in nature. They are provided for general information purposes only. Anyone making use of these details and related information does so at their own risk and assumes all liability for such use. Site specific design should be performed by a licensed Professional Engineer based on actual site conditions, materials, and local practices.

Stone Strong LLC retains all common law, statutory, and other reserved rights to these drawings including the copyright. Limited license is granted to copy, reproduce, or modify the details to prepare construction drawings for Stone Strong retaining walls. Stone Strong LLC makes no warranties, either expressed or implied, of merchantability or fitness for any particular purpose, and accepts no responsibility for the accuracy, suitability, or completeness of information contained herein.



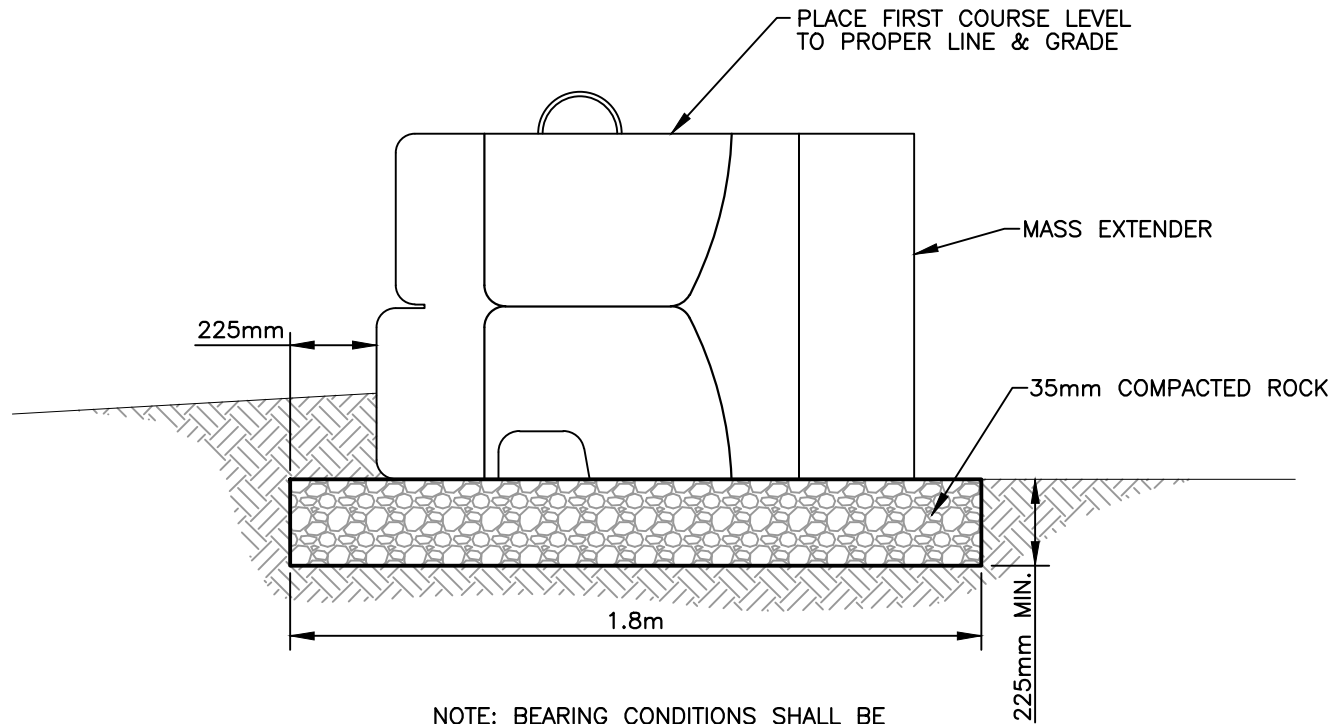
www.stonestrong.com

PROJECT

TYPICAL DETAILS
STONE STRONG SYSTEMS

DATE: 4/18/23

FILE: 05_24-62.Base



NOTE: BEARING CONDITIONS SHALL BE OBSERVED BY THE SITE GEOTECHNICAL ENGINEER. BASE DIMENSIONS MAY BE INCREASED TO ADDRESS DEFICIENT SOIL BEARING CONDITIONS.

24-ME MASS EXTENDER WALL BASE

NOT TO SCALE

CHECK ON AVAILABILITY OF ALL UNITS w/LOCAL PRODUCER/DEALER. SOME UNITS MAY HAVE LIMITED AVAILABILITY.

DISCLAIMER:

These typical details are preliminary and conceptual in nature. They are provided for general information purposes only. Anyone making use of these details and related information does so at their own risk and assumes all liability for such use. Site specific design should be performed by a licensed Professional Engineer based on actual site conditions, materials, and local practices.

Stone Strong LLC retains all common law, statutory, and other reserved rights to these drawings including the copyright. Limited license is granted to copy, reproduce, or modify the details to prepare construction drawings for Stone Strong retaining walls. Stone Strong LLC makes no warranties, either expressed or implied, of merchantability or fitness for any particular purpose, and accepts no responsibility for the accuracy, suitability, or completeness of information contained herein.



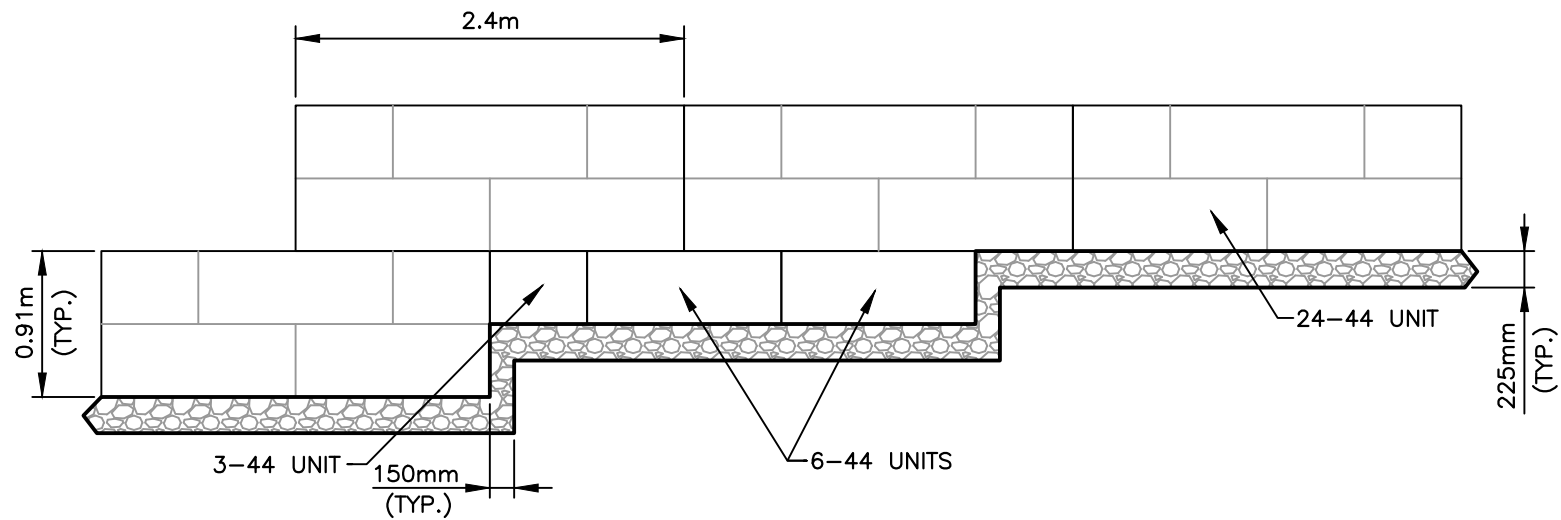
www.stonestrong.com

PROJECT

TYPICAL DETAILS
STONE STRONG SYSTEMS

DATE: 4/18/23

FILE: 06_24-44.Base.MassExtender



WALL BASE STEP

NOT TO SCALE

DISCLAIMER:

These typical details are preliminary and conceptual in nature. They are provided for general information purposes only. Anyone making use of these details and related information does so at their own risk and assumes all liability for such use. Site specific design should be performed by a licensed Professional Engineer based on actual site conditions, materials, and local practices.

Stone Strong LLC retains all common law, statutory, and other reserved rights to these drawings including the copyright. Limited license is granted to copy, reproduce, or modify the details to prepare construction drawings for Stone Strong retaining walls. Stone Strong LLC makes no warranties, either expressed or implied, of merchantability or fitness for any particular purpose, and accepts no responsibility for the accuracy, suitability, or completeness of information contained herein.

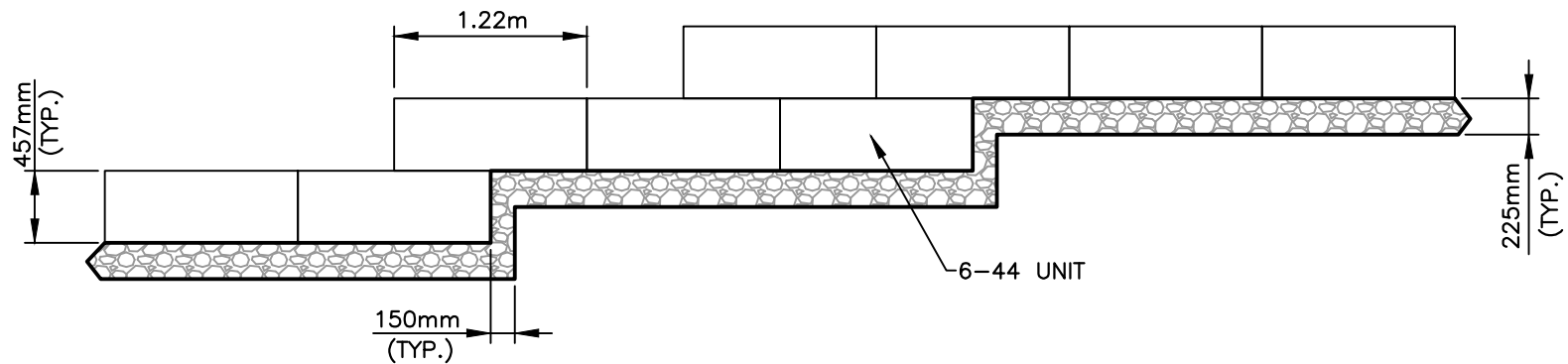


www.stonestrong.com

PROJECT

TYPICAL DETAILS
STONE STRONG SYSTEMS

DATE: 4/18/23 FILE: 07_24-44.BaseStep



6-44 WALL BASE STEP

NOT TO SCALE

DISCLAIMER:

These typical details are preliminary and conceptual in nature. They are provided for general information purposes only. Anyone making use of these details and related information does so at their own risk and assumes all liability for such use. Site specific design should be performed by a licensed Professional Engineer based on actual site conditions, materials, and local practices.

Stone Strong LLC retains all common law, statutory, and other reserved rights to these drawings including the copyright. Limited license is granted to copy, reproduce, or modify the details to prepare construction drawings for Stone Strong retaining walls. Stone Strong LLC makes no warranties, either expressed or implied, of merchantability or fitness for any particular purpose, and accepts no responsibility for the accuracy, suitability, or completeness of information contained herein.

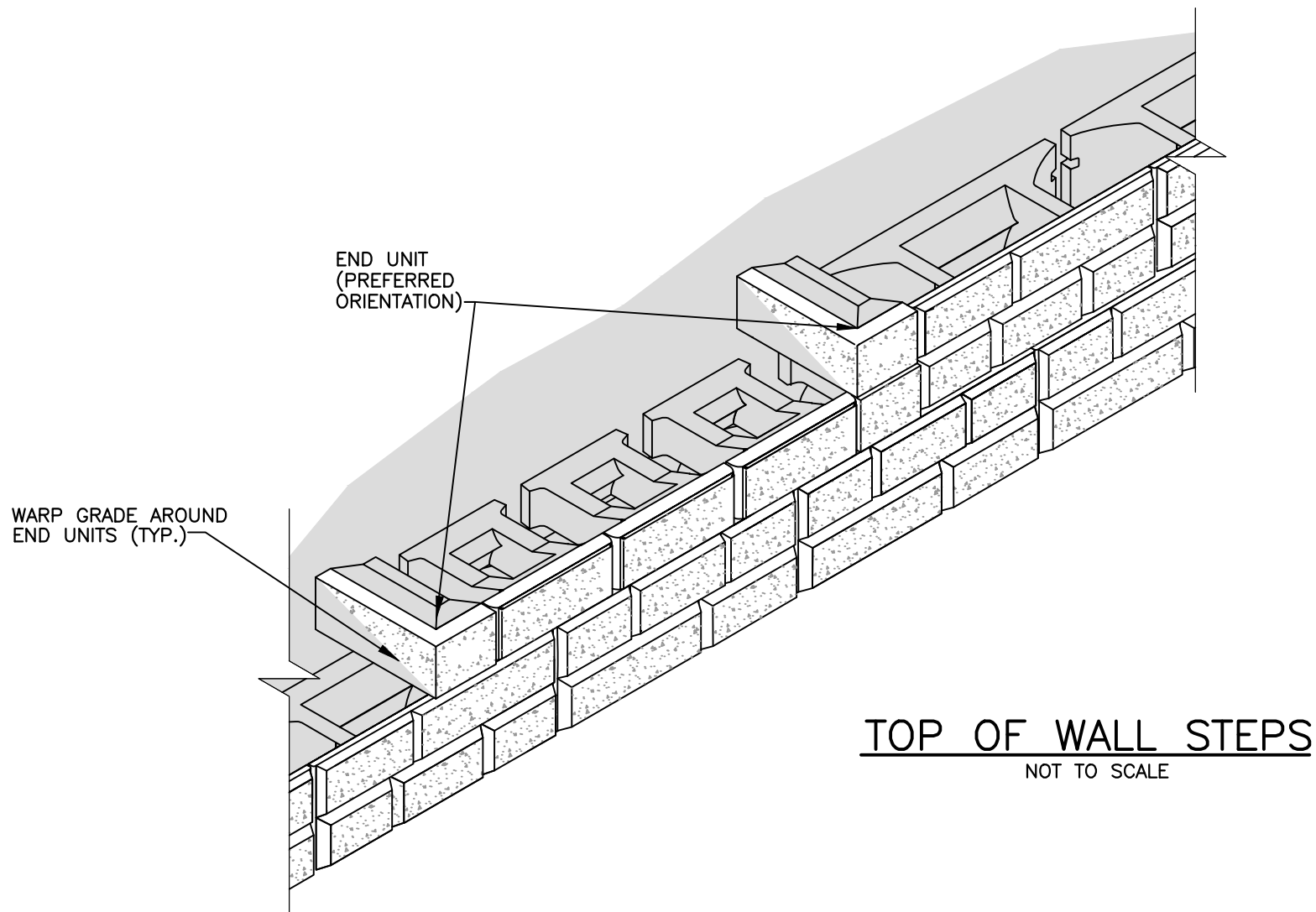


www.stonestrong.com

PROJECT

TYPICAL DETAILS
STONE STRONG SYSTEMS

DATE: 4/18/23 FILE: 08_6-44.BaseStep



DISCLAIMER:

These typical details are preliminary and conceptual in nature. They are provided for general information purposes only. Anyone making use of these details and related information does so at their own risk and assumes all liability for such use. Site specific design should be performed by a licensed Professional Engineer based on actual site conditions, materials, and local practices.

Stone Strong LLC retains all common law, statutory, and other reserved rights to these drawings including the copyright. Limited license is granted to copy, reproduce, or modify the details to prepare construction drawings for Stone Strong retaining walls. Stone Strong LLC makes no warranties, either expressed or implied, of merchantability or fitness for any particular purpose, and accepts no responsibility for the accuracy, suitability, or completeness of information contained herein.

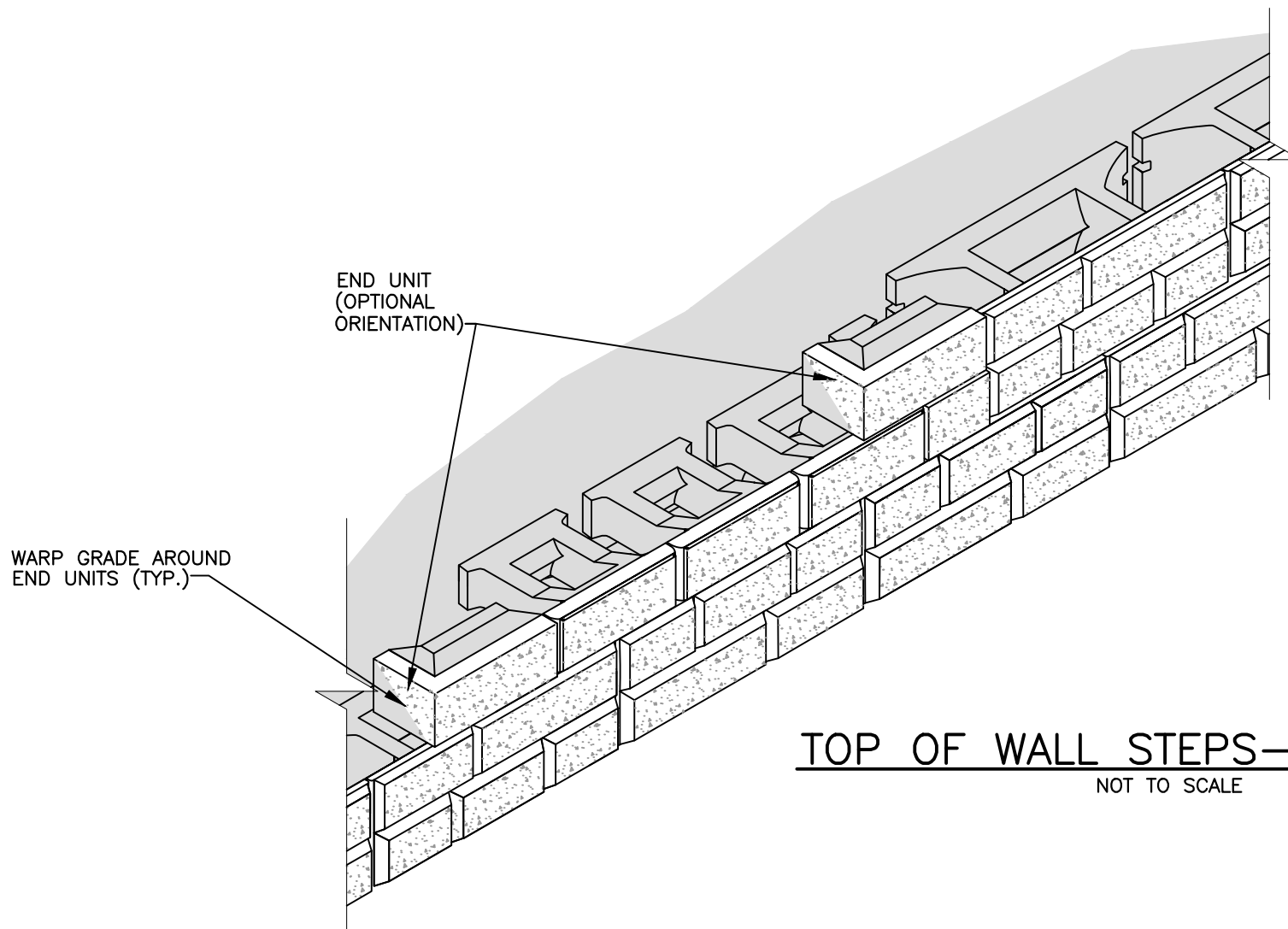


www.stonestrong.com

PROJECT

TYPICAL DETAILS
STONE STRONG SYSTEMS

DATE: 10/12/23 | FILE: 09_TopStep



TOP OF WALL STEPS—ALTERNATE

NOT TO SCALE

DISCLAIMER:

These typical details are preliminary and conceptual in nature. They are provided for general information purposes only. Anyone making use of these details and related information does so at their own risk and assumes all liability for such use. Site specific design should be performed by a licensed Professional Engineer based on actual site conditions, materials, and local practices.

Stone Strong LLC retains all common law, statutory, and other reserved rights to these drawings including the copyright. Limited license is granted to copy, reproduce, or modify the details to prepare construction drawings for Stone Strong retaining walls. Stone Strong LLC makes no warranties, either expressed or implied, of merchantability or fitness for any particular purpose, and accepts no responsibility for the accuracy, suitability, or completeness of information contained herein.



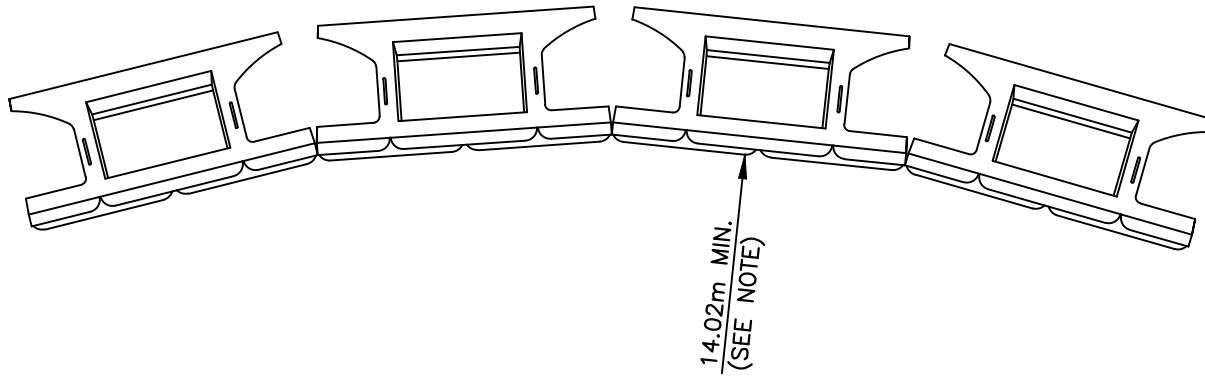
www.stonestrong.com

PROJECT

TYPICAL DETAILS
STONE STRONG SYSTEMS

DATE: 10/12/23 | FILE: 10_TopStepAlt

DUE TO CHANGING ARC LENGTHS ON CURVED SECTIONS OF BATTERED WALLS, UNITS MAY BE INSTALLED SLIGHTLY OFF RUNNING BOND. WHERE TRANSITIONS ARE MADE FROM 6-44 TO 24-44 UNITS, SOME TRIMMING MAY BE NECESSARY AT THE TRANSITION.



NOTE:
MINIMUM RADIUS OCCURS AT LOWEST COURSE.
RADIUS INCREASES 102mm PER COURSE ABOVE,
AS SHOWN ON TABLE.

Minimum Concave Radius		
Wall Height (m)	Total # of Courses	Reqd. Radius at Top Course
1.83	2	14.12m
2.74	3	14.22m
3.66	4	14.33m
4.57	5	14.43m
5.49	6	14.53m
6.40	7	14.63m
7.32	8	14.73m

MINIMUM CONCAVE RADIUS 24-44 UNITS

NOT TO SCALE

THE MINIMUM RADIUS APPLIES TO ALL UNITS/ASSEMBLIES WITH 24-44 FACE

DISCLAIMER:

These typical details are preliminary and conceptual in nature. They are provided for general information purposes only. Anyone making use of these details and related information does so at their own risk and assumes all liability for such use. Site specific design should be performed by a licensed Professional Engineer based on actual site conditions, materials, and local practices.

Stone Strong LLC retains all common law, statutory, and other reserved rights to these drawings including the copyright. Limited license is granted to copy, reproduce, or modify the details to prepare construction drawings for Stone Strong retaining walls. Stone Strong LLC makes no warranties, either expressed or implied, of merchantability or fitness for any particular purpose, and accepts no responsibility for the accuracy, suitability, or completeness of information contained herein.



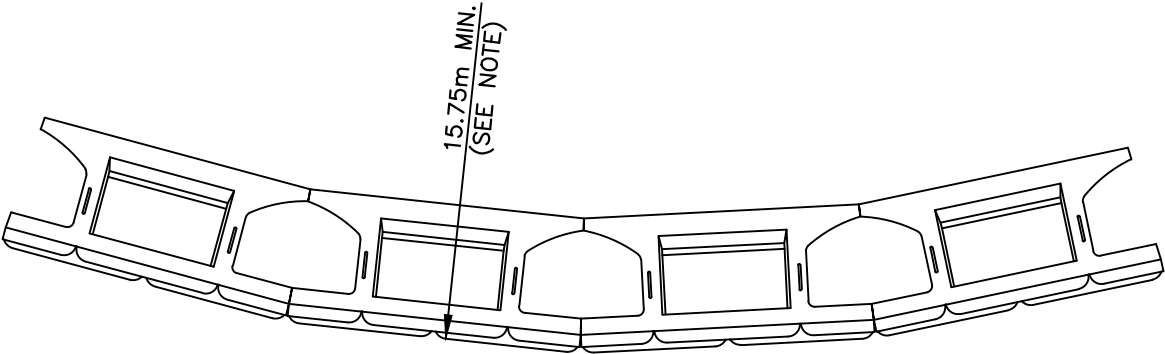
www.stonestrong.com

PROJECT

TYPICAL DETAILS
STONE STRONG SYSTEMS

DATE: 4/18/23 FILE: 11_24-44.RadMin.Concave

DUE TO CHANGING ARC LENGTHS ON CURVED SECTIONS OF BATTERED WALLS, UNITS MAY BE INSTALLED SLIGHTLY OFF RUNNING BOND. WHERE TRANSITIONS ARE MADE FROM 6-44 TO 24-44 UNITS, SOME TRIMMING MAY BE NECESSARY AT THE TRANSITION.



NOTE:
MINIMUM RADIUS OCCURS AT TOP COURSE.
REQUIRED RADIUS INCREASES 102mm PER
COURSE BELOW, AS SHOWN ON TABLE.

Minimum Convex Radius		
Wall Height (m)	Total # of Courses	Reqd. Radius at First Course
1.83	2	15.85m
2.74	3	15.95m
3.66	4	16.05m
4.57	5	16.15m
5.49	6	16.26m
6.40	7	16.36m
7.32	8	16.46m


MINIMUM CONVEX RADIUS 24-44 UNITS

NOT TO SCALE

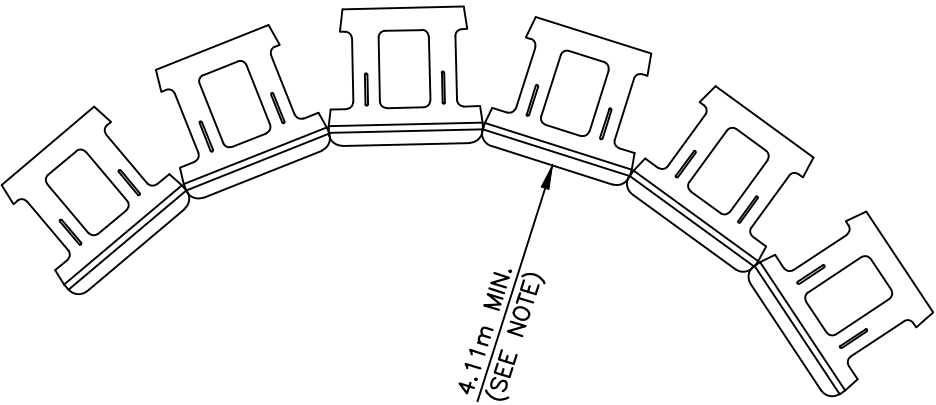
THE MINIMUM RADIUS APPLIES TO ALL
UNITS/ASSEMBLIES WITH 24-44 FACE

DISCLAIMER:
These typical details are preliminary and conceptual in nature. They are provided for general information purposes only. Anyone making use of these details and related information does so at their own risk and assumes all liability for such use. Site specific design should be performed by a licensed Professional Engineer based on actual site conditions, materials, and local practices.

Stone Strong LLC retains all common law, statutory, and other reserved rights to these drawings including the copyright. Limited license is granted to copy, reproduce, or modify the details to prepare construction drawings for Stone Strong retaining walls. Stone Strong LLC makes no warranties, either expressed or implied, of merchantability or fitness for any particular purpose, and accepts no responsibility for the accuracy, suitability, or completeness of information contained herein.

 www.stonestrong.com	PROJECT	
	TYPICAL DETAILS STONE STRONG SYSTEMS	
	DATE: 4/18/23	FILE: 12_24-44.RadMin.Convex

DUE TO CHANGING ARC LENGTHS ON CURVED SECTIONS OF BATTERED WALLS, UNITS MAY BE INSTALLED SLIGHTLY OFF RUNNING BOND. WHERE TRANSITIONS ARE MADE FROM 6-44 TO 24-44 UNITS, SOME TRIMMING MAY BE NECESSARY AT THE TRANSITION.



NOTE:
MINIMUM RADIUS OCCURS AT LOWEST COURSE.
RADIUS INCREASES 51mm PER COURSE
ABOVE, AS SHOWN ON TABLE.

Minimum Concave Radius		
Wall Height (m)	Total # of Courses	Reqd. Radius at First Course
0.91	2	4.17m
1.37	3	4.22m
1.83	4	4.27m
2.29	5	4.32m
2.74	6	4.37m
3.20	7	4.42m
3.66	8	4.47m

MINIMUM CONCAVE RADIUS 6-44 UNITS

NOT TO SCALE

THE MINIMUM RADIUS APPLIES TO ALL UNITS/ASSEMBLIES WITH 6-44 FACE

DISCLAIMER:
These typical details are preliminary and conceptual in nature. They are provided for general information purposes only. Anyone making use of these details and related information does so at their own risk and assumes all liability for such use. Site specific design should be performed by a licensed Professional Engineer based on actual site conditions, materials, and local practices.

Stone Strong LLC retains all common law, statutory, and other reserved rights to these drawings including the copyright. Limited license is granted to copy, reproduce, or modify the details to prepare construction drawings for Stone Strong retaining walls. Stone Strong LLC makes no warranties, either expressed or implied, of merchantability or fitness for any particular purpose, and accepts no responsibility for the accuracy, suitability, or completeness of information contained herein.

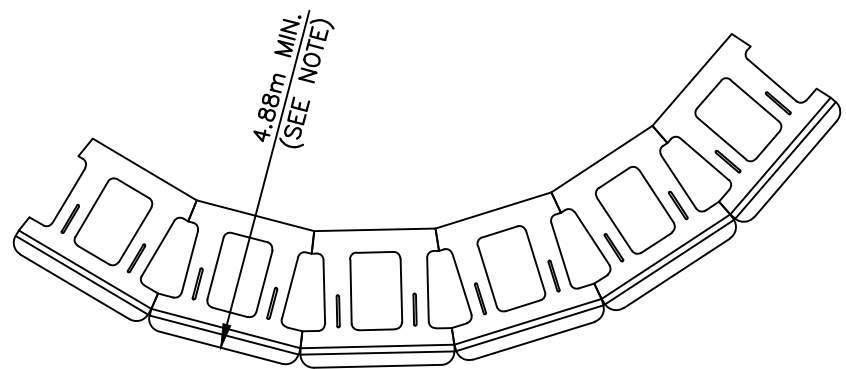


www.stonestrong.com

PROJECT
TYPICAL DETAILS
STONE STRONG SYSTEMS

DATE: 4/18/23 FILE: 13_6-44.RadMin.Convave

DUE TO CHANGING ARC LENGTHS ON CURVED SECTIONS OF BATTERED WALLS, UNITS MAY BE INSTALLED SLIGHTLY OFF RUNNING BOND. WHERE TRANSITIONS ARE MADE FROM 6-44 TO 24-44 UNITS, SOME TRIMMING MAY BE NECESSARY AT THE TRANSITION.



NOTE:
NOTE: MINIMUM RADIUS OCCURS AT TOP COURSE.
REQUIRED RADIUS INCREASES 51mm PER COURSE
BELOW, AS SHOWN ON TABLE.

Minimum Convex Radius		
Wall Height (m)	Total # of Courses	Reqd. Radius at First Course
0.91	2	4.93m
1.37	3	4.98m
1.83	4	5.03m
2.29	5	5.08m
2.74	6	5.13m
3.20	7	5.18m
3.66	8	5.23m

MINIMUM CONVEX RADIUS 6-44 UNITS
NOT TO SCALE

THE MINIMUM RADIUS APPLIES TO ALL
UNITS/ASSEMBLIES WITH 6-44 FACE

DISCLAIMER:
These typical details are preliminary and conceptual in nature. They are provided for general information purposes only. Anyone making use of these details and related information does so at their own risk and assumes all liability for such use. Site specific design should be performed by a licensed Professional Engineer based on actual site conditions, materials, and local practices.

Stone Strong LLC retains all common law, statutory, and other reserved rights to these drawings including the copyright. Limited license is granted to copy, reproduce, or modify the details to prepare construction drawings for Stone Strong retaining walls. Stone Strong LLC makes no warranties, either expressed or implied, of merchantability or fitness for any particular purpose, and accepts no responsibility for the accuracy, suitability, or completeness of information contained herein.

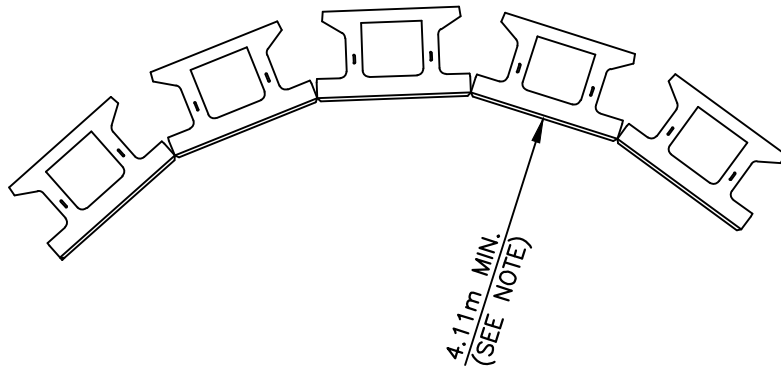


www.stonestrong.com

PROJECT
TYPICAL DETAILS
STONE STRONG SYSTEMS

DATE: 4/18/23 FILE: 14_6-44.RadMin.Convex

DUE TO CHANGING ARC LENGTHS ON CURVED SECTIONS OF BATTERED WALLS, UNITS MAY BE INSTALLED SLIGHTLY OFF RUNNING BOND. WHERE TRANSITIONS ARE MADE FROM 6-44 TO 24-44 UNITS, SOME TRIMMING MAY BE NECESSARY AT THE TRANSITION.



NOTE:
 MINIMUM RADIUS OCCURS AT LOWEST COURSE.
 RADIUS INCREASES 51mm PER COURSE
 ABOVE, AS SHOWN ON TABLE.

Minimum Concave Radius		
Wall Height (m)	Total # of Courses	Reqd. Radius at Top Course
0.91	2	4.16m
1.37	3	4.21m
1.83	4	4.26m
2.29	5	4.31m
2.74	6	4.37m
3.20	7	4.42m
3.66	8	4.47m

MINIMUM CONCAVE RADIUS 6-28 UNITS

NOT TO SCALE

CHECK ON AVAILABILITY OF ALL UNITS w/LOCAL PRODUCER/DEALER. SOME UNITS MAY HAVE LIMITED AVAILABILITY.

DISCLAIMER:

These typical details are preliminary and conceptual in nature. They are provided for general information purposes only. Anyone making use of these details and related information does so at their own risk and assumes all liability for such use. Site specific design should be performed by a licensed Professional Engineer based on actual site conditions, materials, and local practices.

Stone Strong LLC retains all common law, statutory, and other reserved rights to these drawings including the copyright. Limited license is granted to copy, reproduce, or modify the details to prepare construction drawings for Stone Strong retaining walls. Stone Strong LLC makes no warranties, either expressed or implied, of merchantability or fitness for any particular purpose, and accepts no responsibility for the accuracy, suitability, or completeness of information contained herein.



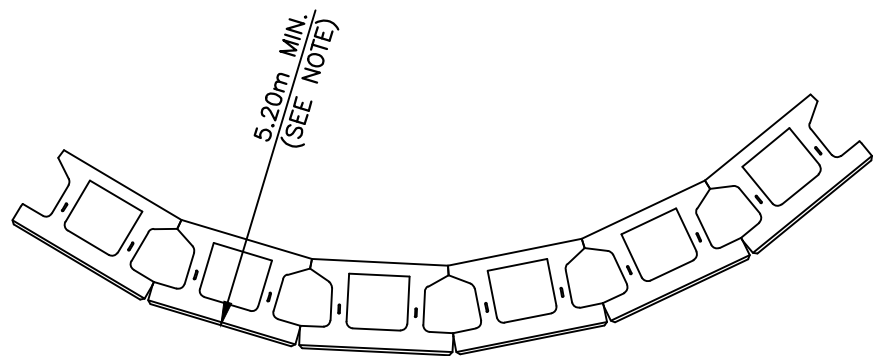
www.stonestrong.com

PROJECT

TYPICAL DETAILS
 STONE STRONG SYSTEMS

DATE: 4/18/23 FILE: 15_6-28.RadMin.Concave

DUE TO CHANGING ARC LENGTHS ON CURVED SECTIONS OF BATTERED WALLS, UNITS MAY BE INSTALLED SLIGHTLY OFF RUNNING BOND. WHERE TRANSITIONS ARE MADE FROM 6-44 TO 24-44 UNITS, SOME TRIMMING MAY BE NECESSARY AT THE TRANSITION.



NOTE:
NOTE: MINIMUM RADIUS OCCURS AT TOP COURSE.
REQUIRED RADIUS INCREASES 51mm PER COURSE
BELOW, AS SHOWN ON TABLE.

Minimum Convex Radius		
Wall Height (m)	Total # of Courses	Reqd. Radius at Top Course
0.91	2	4.89m
1.37	3	4.95m
1.83	4	5.00m
2.29	5	5.05m
2.74	6	5.10m
3.20	7	5.15m
3.66	8	5.20m

MINIMUM CONVEX RADIUS 6-28 UNITS
NOT TO SCALE

DISCLAIMER:
These typical details are preliminary and conceptual in nature. They are provided for general information purposes only. Anyone making use of these details and related information does so at their own risk and assumes all liability for such use. Site specific design should be performed by a licensed Professional Engineer based on actual site conditions, materials, and local practices.

Stone Strong LLC retains all common law, statutory, and other reserved rights to these drawings including the copyright. Limited license is granted to copy, reproduce, or modify the details to prepare construction drawings for Stone Strong retaining walls. Stone Strong LLC makes no warranties, either expressed or implied, of merchantability or fitness for any particular purpose, and accepts no responsibility for the accuracy, suitability, or completeness of information contained herein.

CHECK ON AVAILABILITY OF ALL UNITS w/LOCAL PRODUCER/DEALER. SOME UNITS MAY HAVE LIMITED AVAILABILITY.

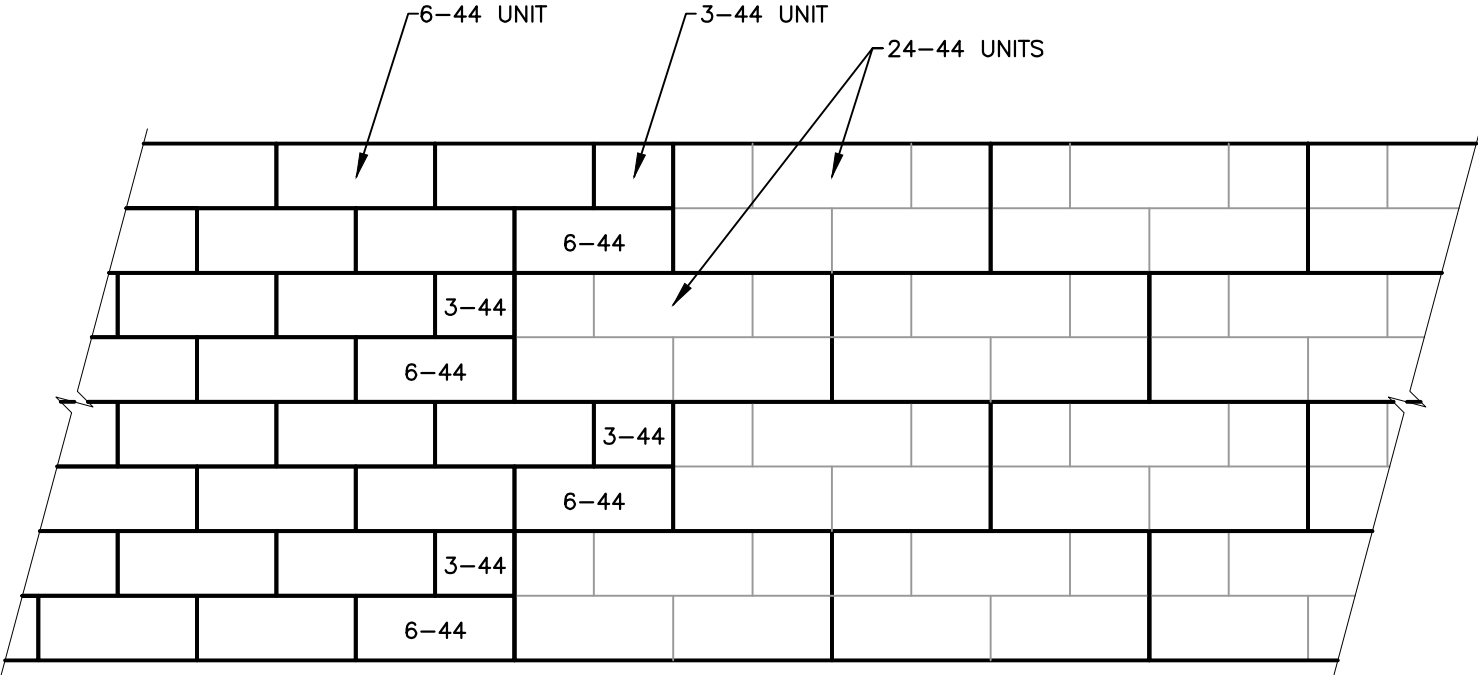


www.stonestrong.com

PROJECT
TYPICAL DETAILS
STONE STRONG SYSTEMS

DATE: 4/18/23 FILE: 16_6-28.RadMin.Convex

DUE TO CHANGING ARC LENGTHS ON CURVED SECTIONS OF BATTERED WALLS, UNITS MAY BE INSTALLED SLIGHTLY OFF RUNNING BOND. WHERE TRANSITIONS ARE MADE FROM 6-44 TO 24-44 UNITS, SOME TRIMMING MAY BE NECESSARY AT THE TRANSITION.



TRANSITION 24-44 TO 6-44

NOT TO SCALE

DISCLAIMER:

These typical details are preliminary and conceptual in nature. They are provided for general information purposes only. Anyone making use of these details and related information does so at their own risk and assumes all liability for such use. Site specific design should be performed by a licensed Professional Engineer based on actual site conditions, materials, and local practices.

Stone Strong LLC retains all common law, statutory, and other reserved rights to these drawings including the copyright. Limited license is granted to copy, reproduce, or modify the details to prepare construction drawings for Stone Strong retaining walls. Stone Strong LLC makes no warranties, either expressed or implied, of merchantability or fitness for any particular purpose, and accepts no responsibility for the accuracy, suitability, or completeness of information contained herein.

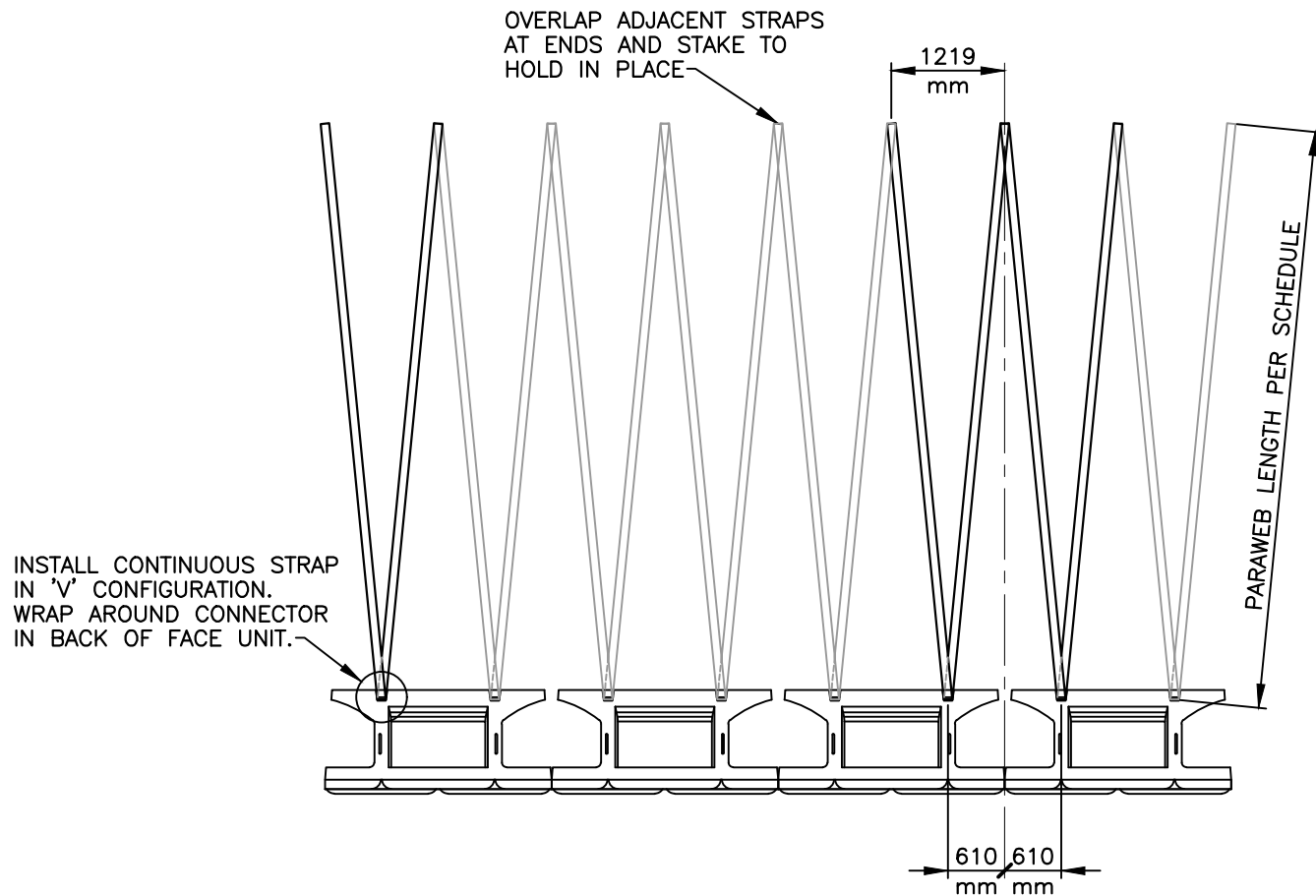


www.stonestrong.com

PROJECT

TYPICAL DETAILS
STONE STRONG SYSTEMS

DATE: 4/18/23 FILE: 17_24-44 to 6-44.Transition



TYPICAL PARAWEB LAYOUT
NOT TO SCALE

DISCLAIMER:

These typical details are preliminary and conceptual in nature. They are provided for general information purposes only. Anyone making use of these details and related information does so at their own risk and assumes all liability for such use. Site specific design should be performed by a licensed Professional Engineer based on actual site conditions, materials, and local practices.

Stone Strong LLC retains all common law, statutory, and other reserved rights to these drawings including the copyright. Limited license is granted to copy, reproduce, or modify the details to prepare construction drawings for Stone Strong retaining walls. Stone Strong LLC makes no warranties, either expressed or implied, of merchantability or fitness for any particular purpose, and accepts no responsibility for the accuracy, suitability, or completeness of information contained herein.

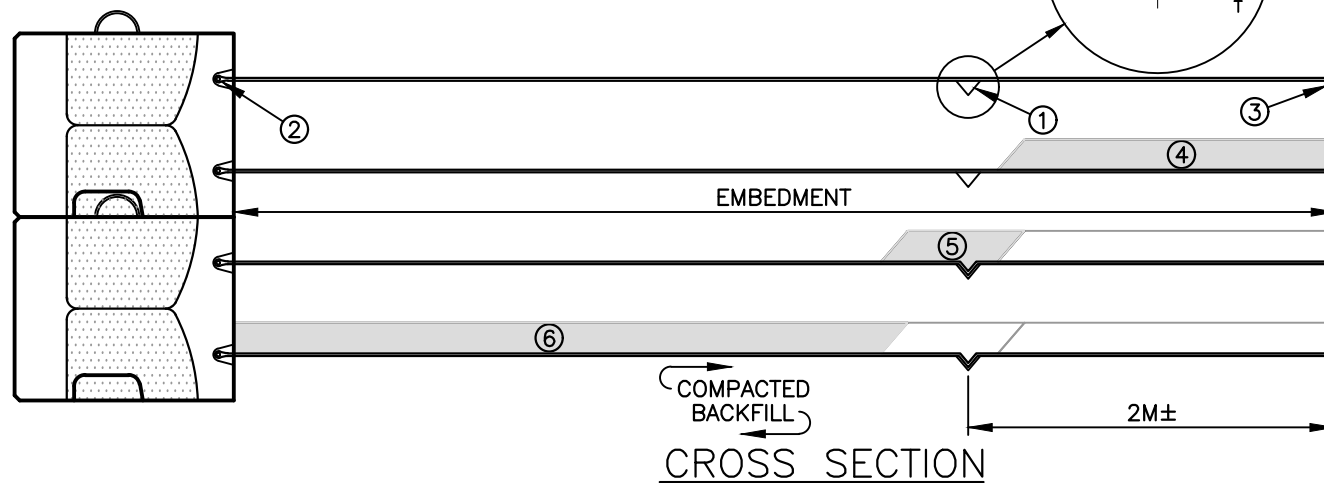
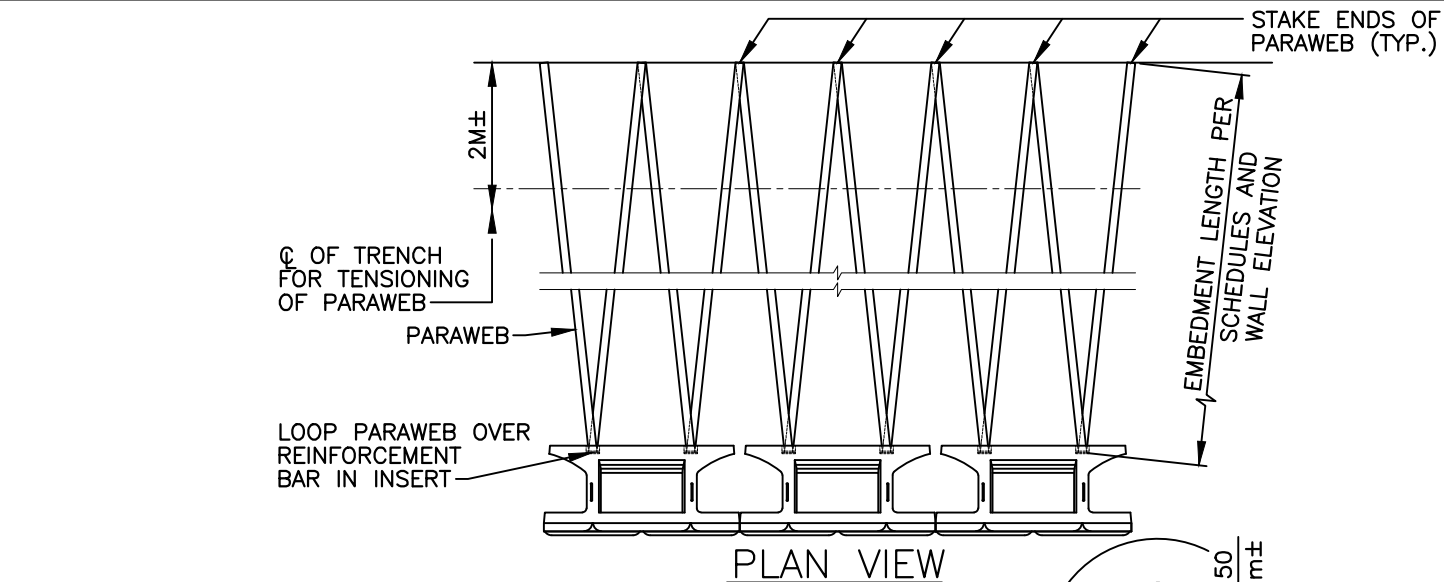


www.stonestrong.com

PROJECT

TYPICAL DETAILS
STONE STRONG SYSTEMS

DATE: 4/18/23 FILE: 18_Typical Paraweb Layout



PARAWEB INSTALLATION SCHEMATIC

NOT TO SCALE

- ① CUT TRENCH BEFORE LAYING PARAWEB OVER COMPACTED BACKFILL
- ② LOOP PARAWEB OVER REINFORCEMENT BAR IN INSERT. LAY OUT PARAWEB STRAPS AND SPAN OVER TRENCH
- ③ STAKE PARAWEB IN PLACE
- ④ FILL AND COMPACT BACKFILL OVER REAR OF PARAWEB STRAP
- ⑤ FILL AND COMPACT BACKFILL OVER TRENCH TO TENSION PARAWEB
- ⑥ FILL AND COMPACT REMAINDER OF BACKFILL OVER PARAWEB

DISCLAIMER:

These typical details are preliminary and conceptual in nature. They are provided for general information purposes only. Anyone making use of these details and related information does so at their own risk and assumes all liability for such use. Site specific design should be performed by a licensed Professional Engineer based on actual site conditions, materials, and local practices.

Stone Strong LLC retains all common law, statutory, and other reserved rights to these drawings including the copyright. Limited license is granted to copy, reproduce, or modify the details to prepare construction drawings for Stone Strong retaining walls. Stone Strong LLC makes no warranties, either expressed or implied, of merchantability or fitness for any particular purpose, and accepts no responsibility for the accuracy, suitability, or completeness of information contained herein.

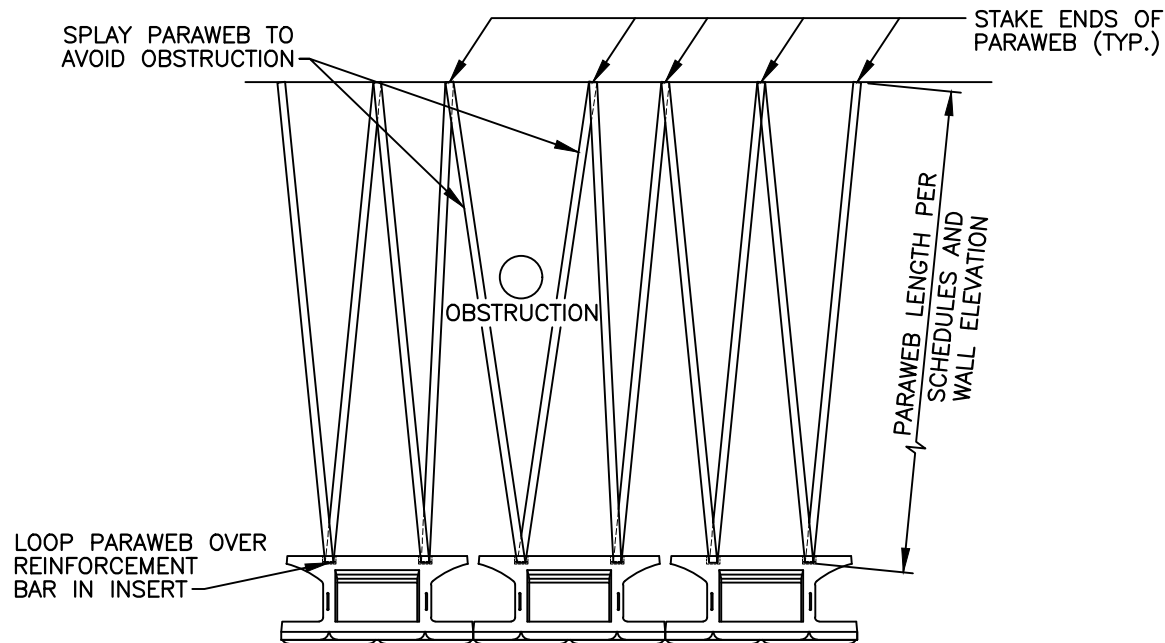


www.stonestrong.com

PROJECT

TYPICAL DETAILS
STONE STRONG SYSTEMS

DATE: 4/18/23 FILE: 19_Paraweb Install Schematic



PLAN VIEW

PARAWEB OBSTRUCTION DETAIL

NOT TO SCALE

1 OF 3

DISCLAIMER:

These typical details are preliminary and conceptual in nature. They are provided for general information purposes only. Anyone making use of these details and related information does so at their own risk and assumes all liability for such use. Site specific design should be performed by a licensed Professional Engineer based on actual site conditions, materials, and local practices.

Stone Strong LLC retains all common law, statutory, and other reserved rights to these drawings including the copyright. Limited license is granted to copy, reproduce, or modify the details to prepare construction drawings for Stone Strong retaining walls. Stone Strong LLC makes no warranties, either expressed or implied, of merchantability or fitness for any particular purpose, and accepts no responsibility for the accuracy, suitability, or completeness of information contained herein.

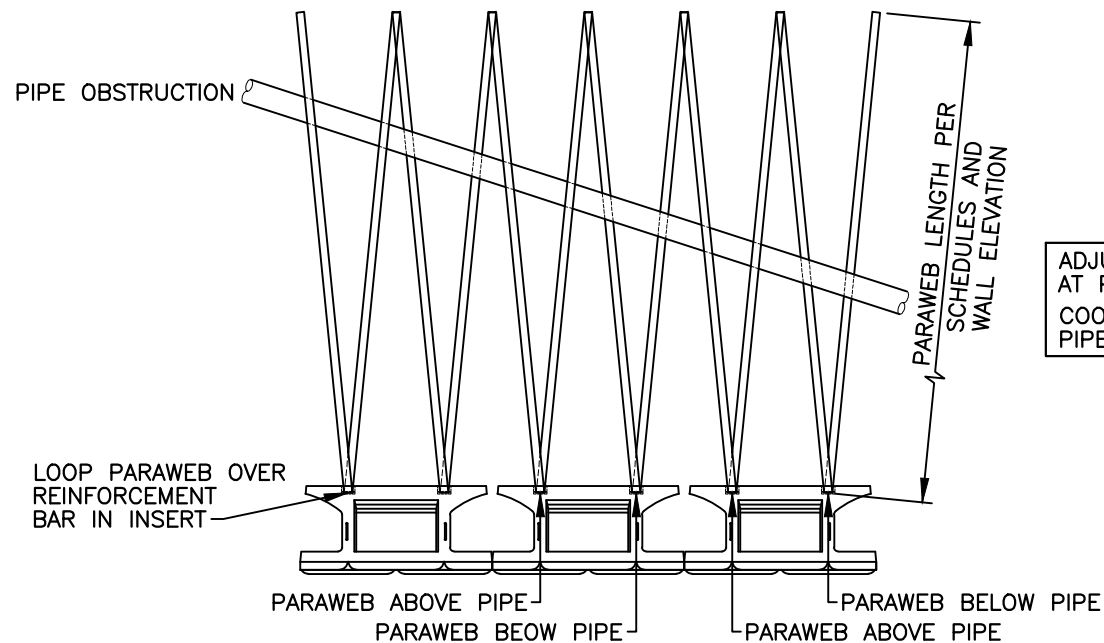


www.stonestrong.com

PROJECT

TYPICAL DETAILS
STONE STRONG SYSTEMS

DATE: 4/18/23 FILE: 20_Paraweb Obstruction.1



PLAN VIEW

PARAWEB OBSTRUCTION DETAIL

NOT TO SCALE

DISCLAIMER:

These typical details are preliminary and conceptual in nature. They are provided for general information purposes only. Anyone making use of these details and related information does so at their own risk and assumes all liability for such use. Site specific design should be performed by a licensed Professional Engineer based on actual site conditions, materials, and local practices.

Stone Strong LLC retains all common law, statutory, and other reserved rights to these drawings including the copyright. Limited license is granted to copy, reproduce, or modify the details to prepare construction drawings for Stone Strong retaining walls. Stone Strong LLC makes no warranties, either expressed or implied, of merchantability or fitness for any particular purpose, and accepts no responsibility for the accuracy, suitability, or completeness of information contained herein.



www.stonestrong.com

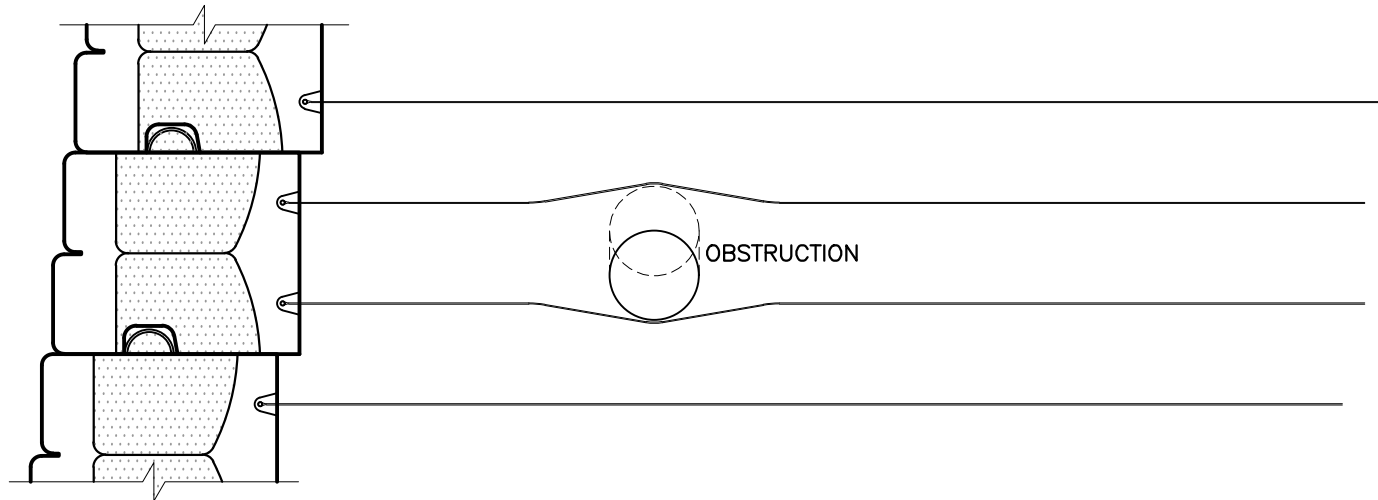
PROJECT

TYPICAL DETAILS
STONE STRONG SYSTEMS

DATE: 4/18/23 FILE: 20_Paraweb Obstruction.2

NOTE:

COORDINATE INSTALLATION OF PIPE/UTILITY WITH WALL.
RUN PARAWEB STRAPS ABOVE OR BELOW OBSTRUCTION
TO MINIMIZE OFFSET FROM LEVEL PLANE.



PARAWEB PIPE/UTILITY OBSTRUCTION SECTION

NOT TO SCALE

3 OF 3

DISCLAIMER:

These typical details are preliminary and conceptual in nature. They are provided for general information purposes only. Anyone making use of these details and related information does so at their own risk and assumes all liability for such use. Site specific design should be performed by a licensed Professional Engineer based on actual site conditions, materials, and local practices.

Stone Strong LLC retains all common law, statutory, and other reserved rights to these drawings including the copyright. Limited license is granted to copy, reproduce, or modify the details to prepare construction drawings for Stone Strong retaining walls. Stone Strong LLC makes no warranties, either expressed or implied, of merchantability or fitness for any particular purpose, and accepts no responsibility for the accuracy, suitability, or completeness of information contained herein.

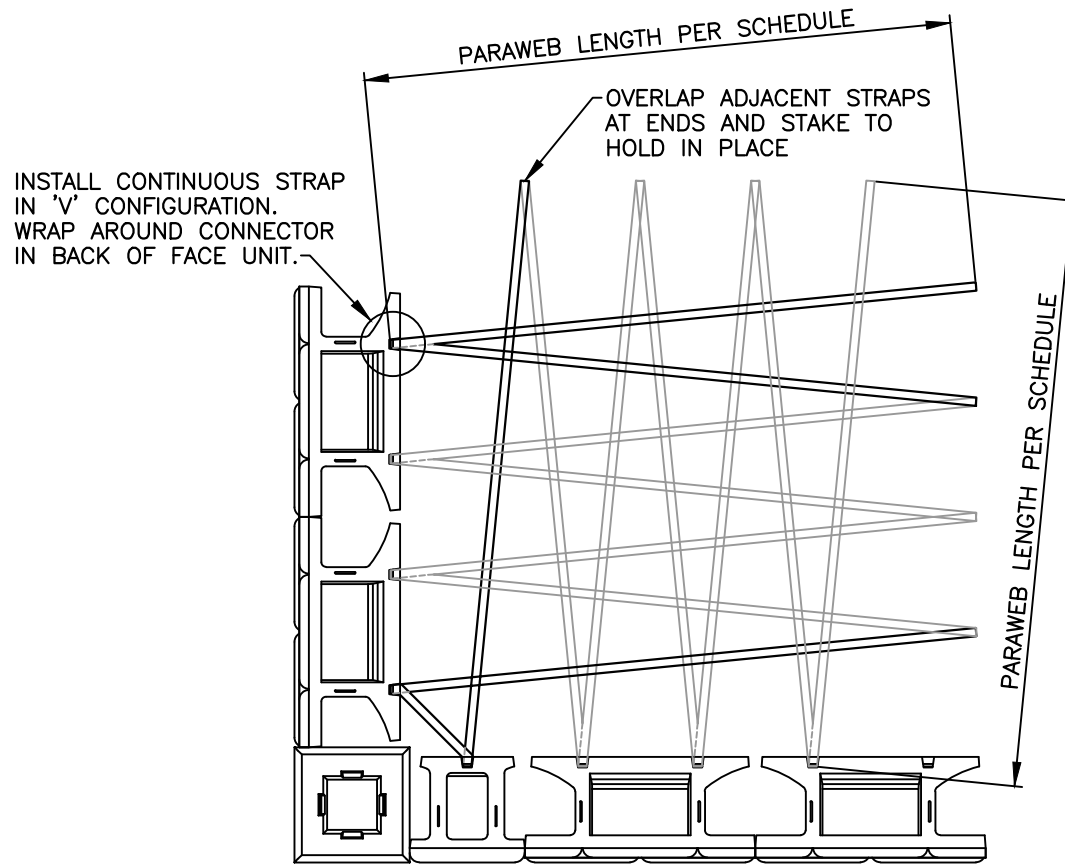


www.stonestrong.com

PROJECT

TYPICAL DETAILS
STONE STRONG SYSTEMS

DATE: 4/18/23 FILE: 20_Paraweb Obstruction.3



PARAWEB ON OUTSIDE CORNER

NOT TO SCALE

DISCLAIMER:

These typical details are preliminary and conceptual in nature. They are provided for general information purposes only. Anyone making use of these details and related information does so at their own risk and assumes all liability for such use. Site specific design should be performed by a licensed Professional Engineer based on actual site conditions, materials, and local practices.

Stone Strong LLC retains all common law, statutory, and other reserved rights to these drawings including the copyright. Limited license is granted to copy, reproduce, or modify the details to prepare construction drawings for Stone Strong retaining walls. Stone Strong LLC makes no warranties, either expressed or implied, of merchantability or fitness for any particular purpose, and accepts no responsibility for the accuracy, suitability, or completeness of information contained herein.



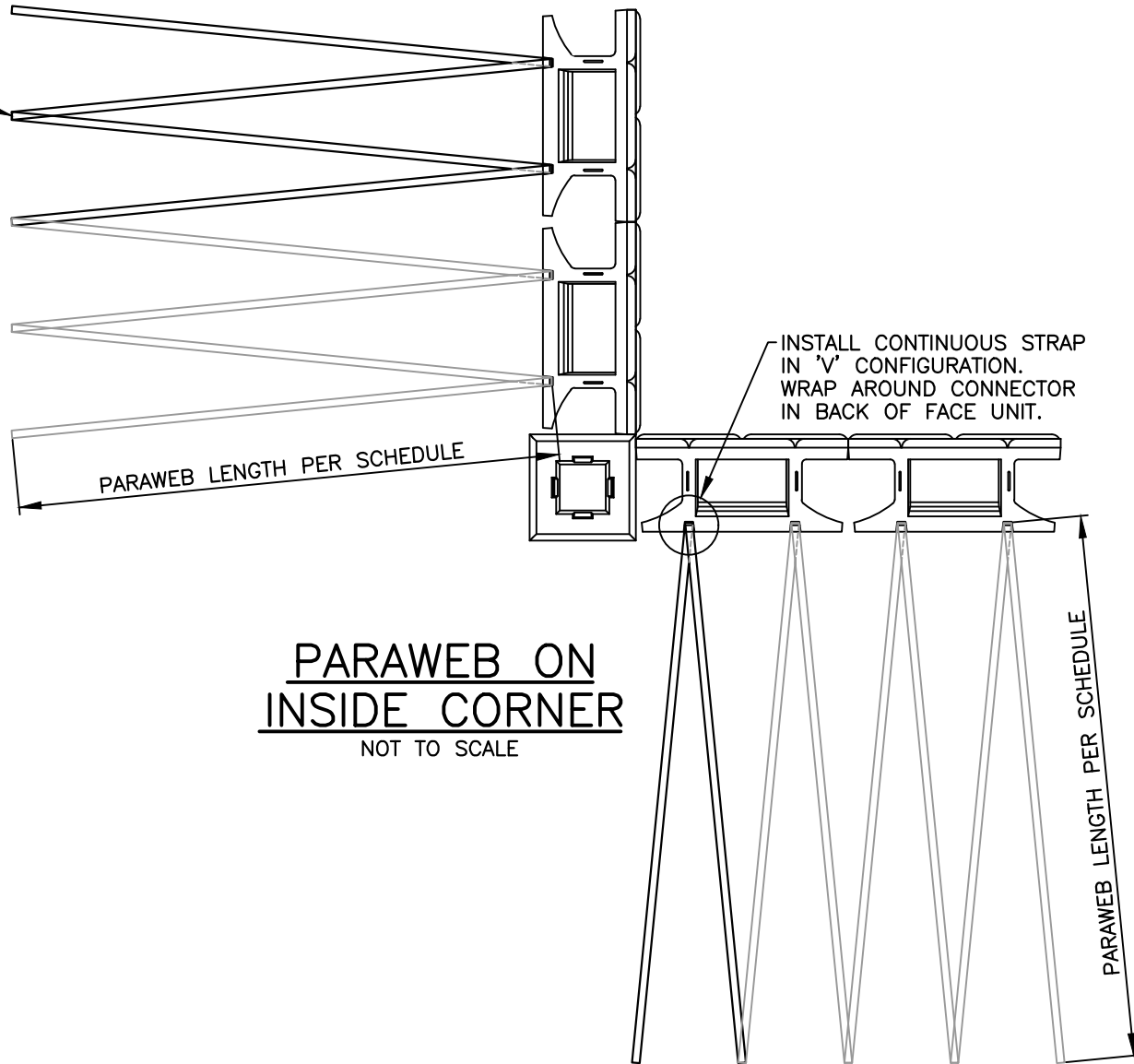
www.stonestrong.com

PROJECT

TYPICAL DETAILS
STONE STRONG SYSTEMS

DATE: 4/18/23 FILE: 21_Paraweb.Outside Corner

OVERLAP ADJACENT STRAPS
AT ENDS AND STAKE TO
HOLD IN PLACE



**PARAWEB ON
INSIDE CORNER**
NOT TO SCALE

DISCLAIMER:

These typical details are preliminary and conceptual in nature. They are provided for general information purposes only. Anyone making use of these details and related information does so at their own risk and assumes all liability for such use. Site specific design should be performed by a licensed Professional Engineer based on actual site conditions, materials, and local practices.

Stone Strong LLC retains all common law, statutory, and other reserved rights to these drawings including the copyright. Limited license is granted to copy, reproduce, or modify the details to prepare construction drawings for Stone Strong retaining walls. Stone Strong LLC makes no warranties, either expressed or implied, of merchantability or fitness for any particular purpose, and accepts no responsibility for the accuracy, suitability, or completeness of information contained herein.



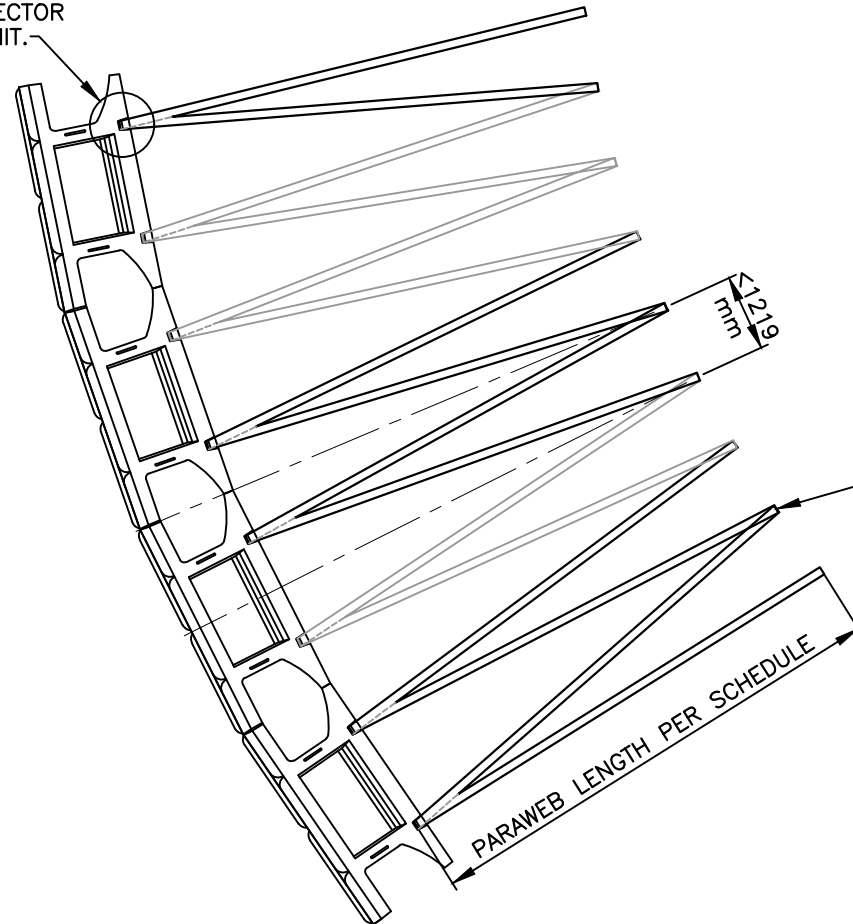
www.stonestrong.com

PROJECT

TYPICAL DETAILS
STONE STRONG SYSTEMS

DATE: 4/18/23 FILE: 22_Paraweb-Inside Corner

INSTALL CONTINUOUS STRAP
IN 'V' CONFIGURATION.
WRAP AROUND CONNECTOR
IN BACK OF FACE UNIT.



OVERLAP ADJACENT STRAPS
AT ENDS AND STAKE TO
HOLD IN PLACE

PARAWEB ON LONG RADIUS CONVEX CURVE

NOT TO SCALE

DISCLAIMER:

These typical details are preliminary and conceptual in nature. They are provided for general information purposes only. Anyone making use of these details and related information does so at their own risk and assumes all liability for such use. Site specific design should be performed by a licensed Professional Engineer based on actual site conditions, materials, and local practices.

Stone Strong LLC retains all common law, statutory, and other reserved rights to these drawings including the copyright. Limited license is granted to copy, reproduce, or modify the details to prepare construction drawings for Stone Strong retaining walls. Stone Strong LLC makes no warranties, either expressed or implied, of merchantability or fitness for any particular purpose, and accepts no responsibility for the accuracy, suitability, or completeness of information contained herein.



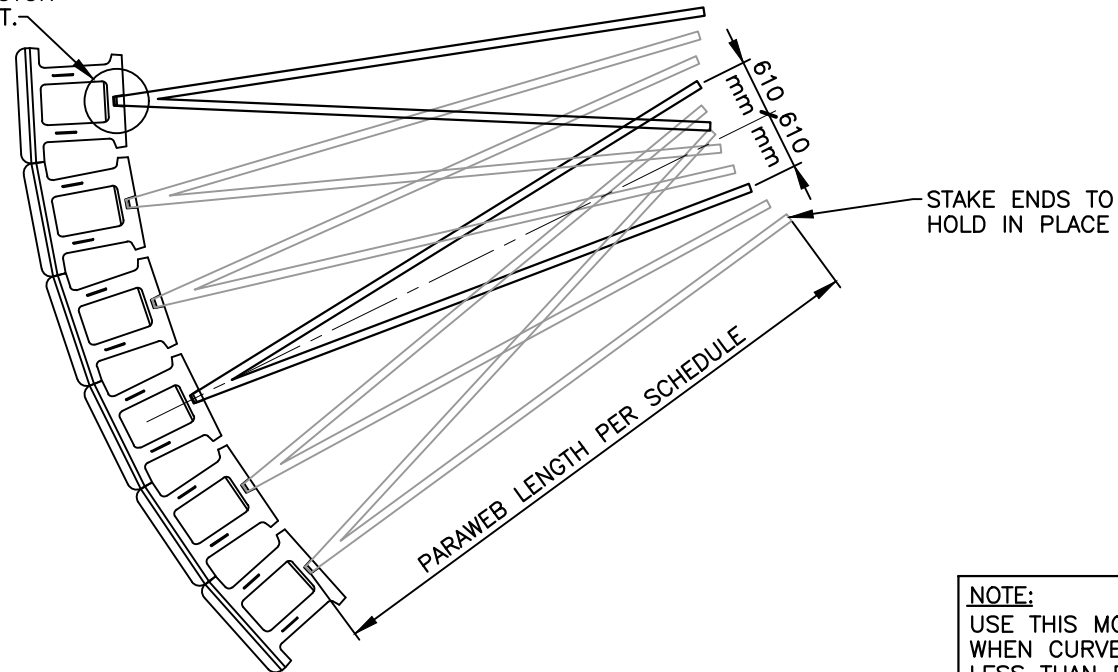
www.stonestrong.com

PROJECT

TYPICAL DETAILS
STONE STRONG SYSTEMS

DATE: 4/18/23 FILE: 23_Para.LgRad.Convex

INSTALL CONTINUOUS STRAP
IN 'V' CONFIGURATION.
WRAP AROUND CONNECTOR
IN BACK OF FACE UNIT.



NOTE:
USE THIS MODIFIED LAYOUT
WHEN CURVE RADIUS IS
LESS THAN PARAWEB LENGTH
PLUS 10 FEET

PARAWEB ON SHORT RADIUS CONVEX CURVE NOT TO SCALE

DISCLAIMER:

These typical details are preliminary and conceptual in nature. They are provided for general information purposes only. Anyone making use of these details and related information does so at their own risk and assumes all liability for such use. Site specific design should be performed by a licensed Professional Engineer based on actual site conditions, materials, and local practices.

Stone Strong LLC retains all common law, statutory, and other reserved rights to these drawings including the copyright. Limited license is granted to copy, reproduce, or modify the details to prepare construction drawings for Stone Strong retaining walls. Stone Strong LLC makes no warranties, either expressed or implied, of merchantability or fitness for any particular purpose, and accepts no responsibility for the accuracy, suitability, or completeness of information contained herein.

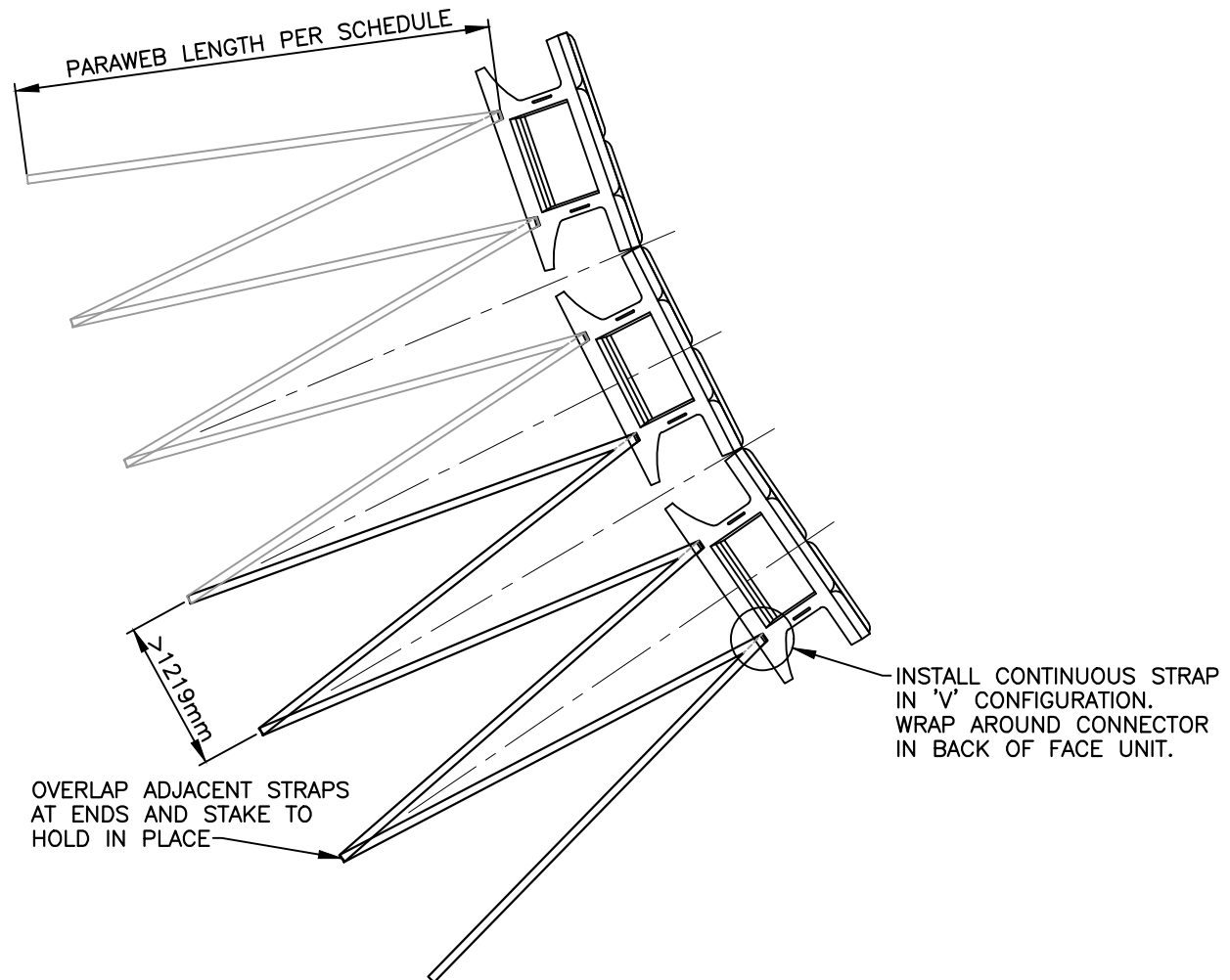


www.stonestrong.com

PROJECT

TYPICAL DETAILS
STONE STRONG SYSTEMS

DATE: 4/18/23 FILE: 24_Para.ShtRad.Convex



**PARAWEB ON
CONCAVE CURVE**
NOT TO SCALE

DISCLAIMER:

These typical details are preliminary and conceptual in nature. They are provided for general information purposes only. Anyone making use of these details and related information does so at their own risk and assumes all liability for such use. Site specific design should be performed by a licensed Professional Engineer based on actual site conditions, materials, and local practices.

Stone Strong LLC retains all common law, statutory, and other reserved rights to these drawings including the copyright. Limited license is granted to copy, reproduce, or modify the details to prepare construction drawings for Stone Strong retaining walls. Stone Strong LLC makes no warranties, either expressed or implied, of merchantability or fitness for any particular purpose, and accepts no responsibility for the accuracy, suitability, or completeness of information contained herein.

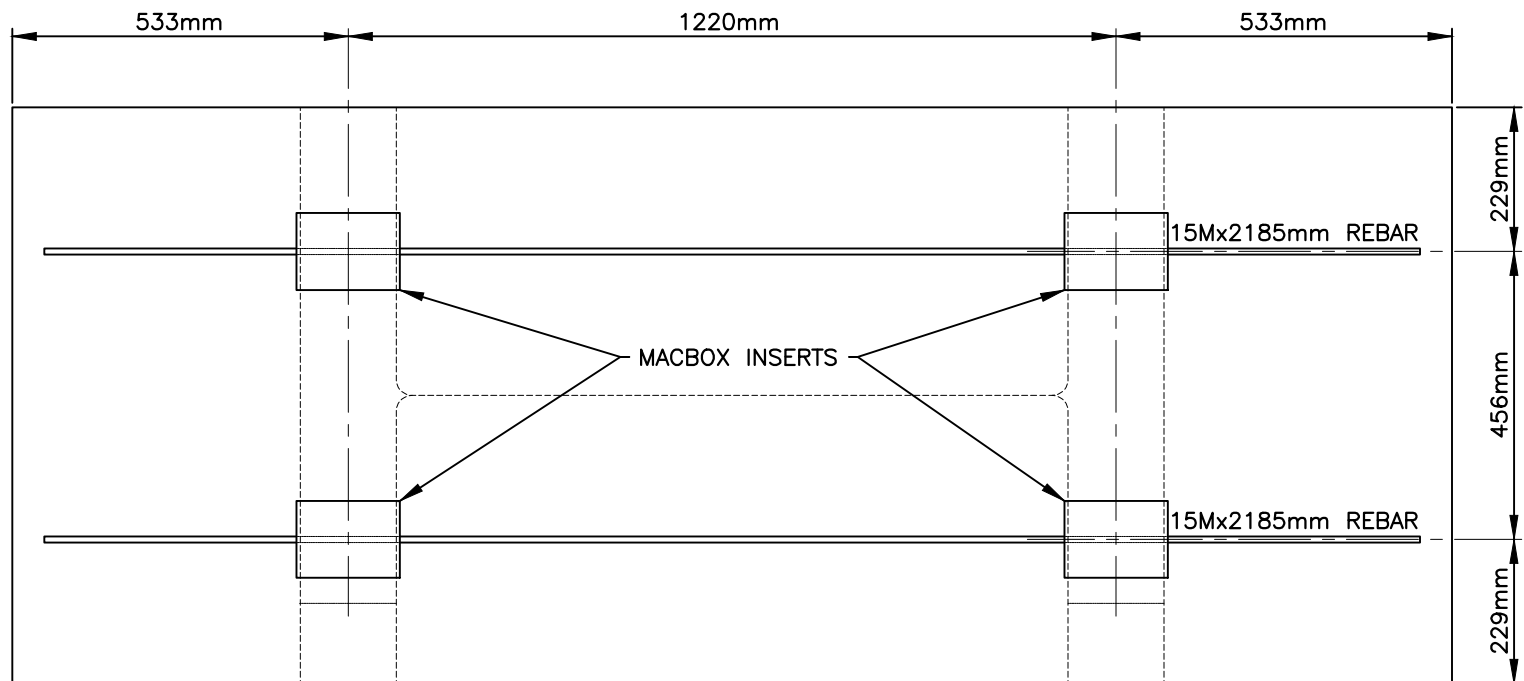


www.stonestrong.com

PROJECT

TYPICAL DETAILS
STONE STRONG SYSTEMS

DATE: 4/18/23 | FILE: 25_Paraweb.Concave Radius



24-44 UNIT w/PARAWEB INSERTS

DISCLAIMER:

These typical details are preliminary and conceptual in nature. They are provided for general information purposes only. Anyone making use of these details and related information does so at their own risk and assumes all liability for such use. Site specific design should be performed by a licensed Professional Engineer based on actual site conditions, materials, and local practices.

Stone Strong LLC retains all common law, statutory, and other reserved rights to these drawings including the copyright. Limited license is granted to copy, reproduce, or modify the details to prepare construction drawings for Stone Strong retaining walls. Stone Strong LLC makes no warranties, either expressed or implied, of merchantability or fitness for any particular purpose, and accepts no responsibility for the accuracy, suitability, or completeness of information contained herein.

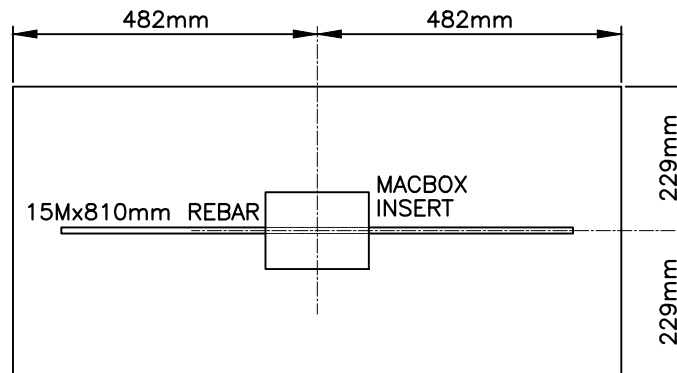


www.stonestrong.com

PROJECT

TYPICAL DETAILS
STONE STRONG SYSTEMS

DATE: 4/18/23 FILE: 26_24-44.Rear Shell Inserts



6-44 UNIT w/ PARAWEB INSERT

DISCLAIMER:

These typical details are preliminary and conceptual in nature. They are provided for general information purposes only. Anyone making use of these details and related information does so at their own risk and assumes all liability for such use. Site specific design should be performed by a licensed Professional Engineer based on actual site conditions, materials, and local practices.

Stone Strong LLC retains all common law, statutory, and other reserved rights to these drawings including the copyright. Limited license is granted to copy, reproduce, or modify the details to prepare construction drawings for Stone Strong retaining walls. Stone Strong LLC makes no warranties, either expressed or implied, of merchantability or fitness for any particular purpose, and accepts no responsibility for the accuracy, suitability, or completeness of information contained herein.

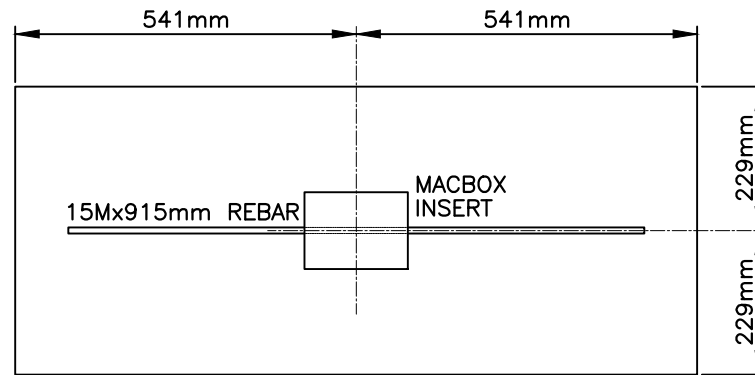


www.stonestrong.com

PROJECT

TYPICAL DETAILS
STONE STRONG SYSTEMS

DATE: 4/18/23 FILE: 27_6-44.Rear Shell Insert



6-28 UNIT w/ PARAWEB INSERT

DISCLAIMER:

These typical details are preliminary and conceptual in nature. They are provided for general information purposes only. Anyone making use of these details and related information does so at their own risk and assumes all liability for such use. Site specific design should be performed by a licensed Professional Engineer based on actual site conditions, materials, and local practices.

Stone Strong LLC retains all common law, statutory, and other reserved rights to these drawings including the copyright. Limited license is granted to copy, reproduce, or modify the details to prepare construction drawings for Stone Strong retaining walls. Stone Strong LLC makes no warranties, either expressed or implied, of merchantability or fitness for any particular purpose, and accepts no responsibility for the accuracy, suitability, or completeness of information contained herein.



www.stonestrong.com

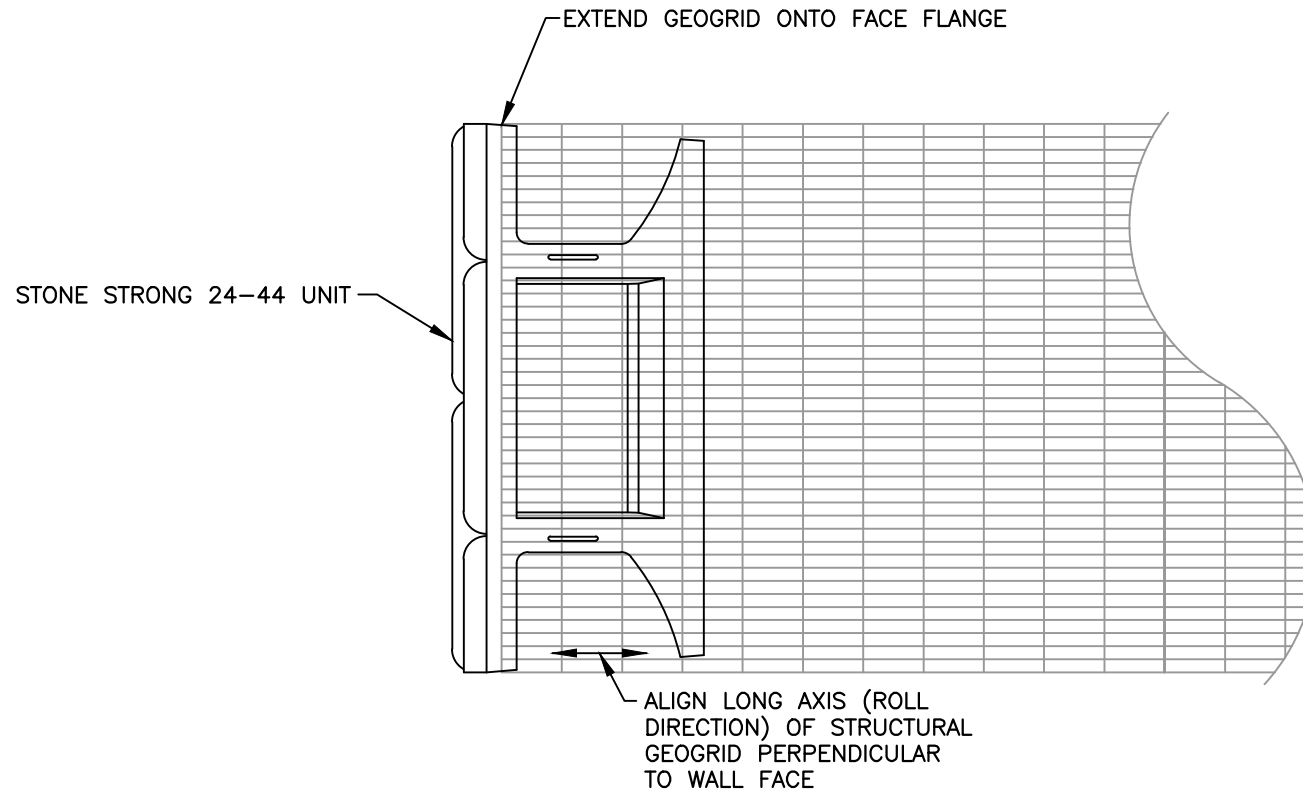
PROJECT

TYPICAL DETAILS
STONE STRONG SYSTEMS

DATE: 4/18/23 FILE: 28_6-28.Rear Shell Insert

NOTE:

USE REINFORCED 24-44 UNITS BELOW TOP 3.66m IN GEOGRID REINFORCED WALLS.
SEE FACE AND WEB MESH DETAILS FOR OPTIONAL REINFORCEMENT GRID.



24-44 GEOGRID ORIENTATION

NOT TO SCALE

DISCLAIMER:

These typical details are preliminary and conceptual in nature. They are provided for general information purposes only. Anyone making use of these details and related information does so at their own risk and assumes all liability for such use. Site specific design should be performed by a licensed Professional Engineer based on actual site conditions, materials, and local practices.

Stone Strong LLC retains all common law, statutory, and other reserved rights to these drawings including the copyright. Limited license is granted to copy, reproduce, or modify the details to prepare construction drawings for Stone Strong retaining walls. Stone Strong LLC makes no warranties, either expressed or implied, of merchantability or fitness for any particular purpose, and accepts no responsibility for the accuracy, suitability, or completeness of information contained herein.

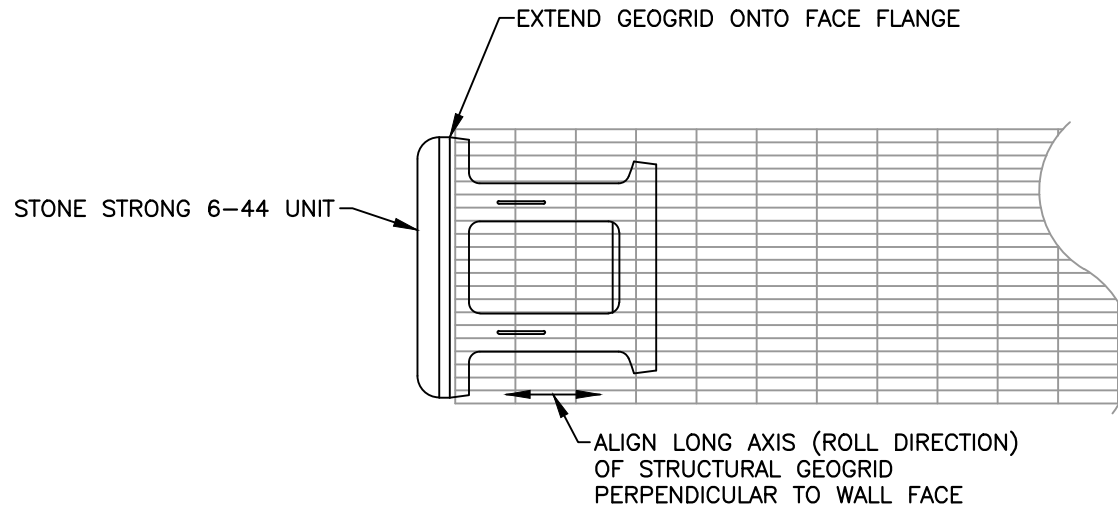


www.stonestrong.com

PROJECT

TYPICAL DETAILS
STONE STRONG SYSTEMS

DATE: 4/18/23 FILE: 29_24-44.GridOrient



6-44 GEOGRID ORIENTATION

NOT TO SCALE

DISCLAIMER:

These typical details are preliminary and conceptual in nature. They are provided for general information purposes only. Anyone making use of these details and related information does so at their own risk and assumes all liability for such use. Site specific design should be performed by a licensed Professional Engineer based on actual site conditions, materials, and local practices.

Stone Strong LLC retains all common law, statutory, and other reserved rights to these drawings including the copyright. Limited license is granted to copy, reproduce, or modify the details to prepare construction drawings for Stone Strong retaining walls. Stone Strong LLC makes no warranties, either expressed or implied, of merchantability or fitness for any particular purpose, and accepts no responsibility for the accuracy, suitability, or completeness of information contained herein.



www.stonestrong.com

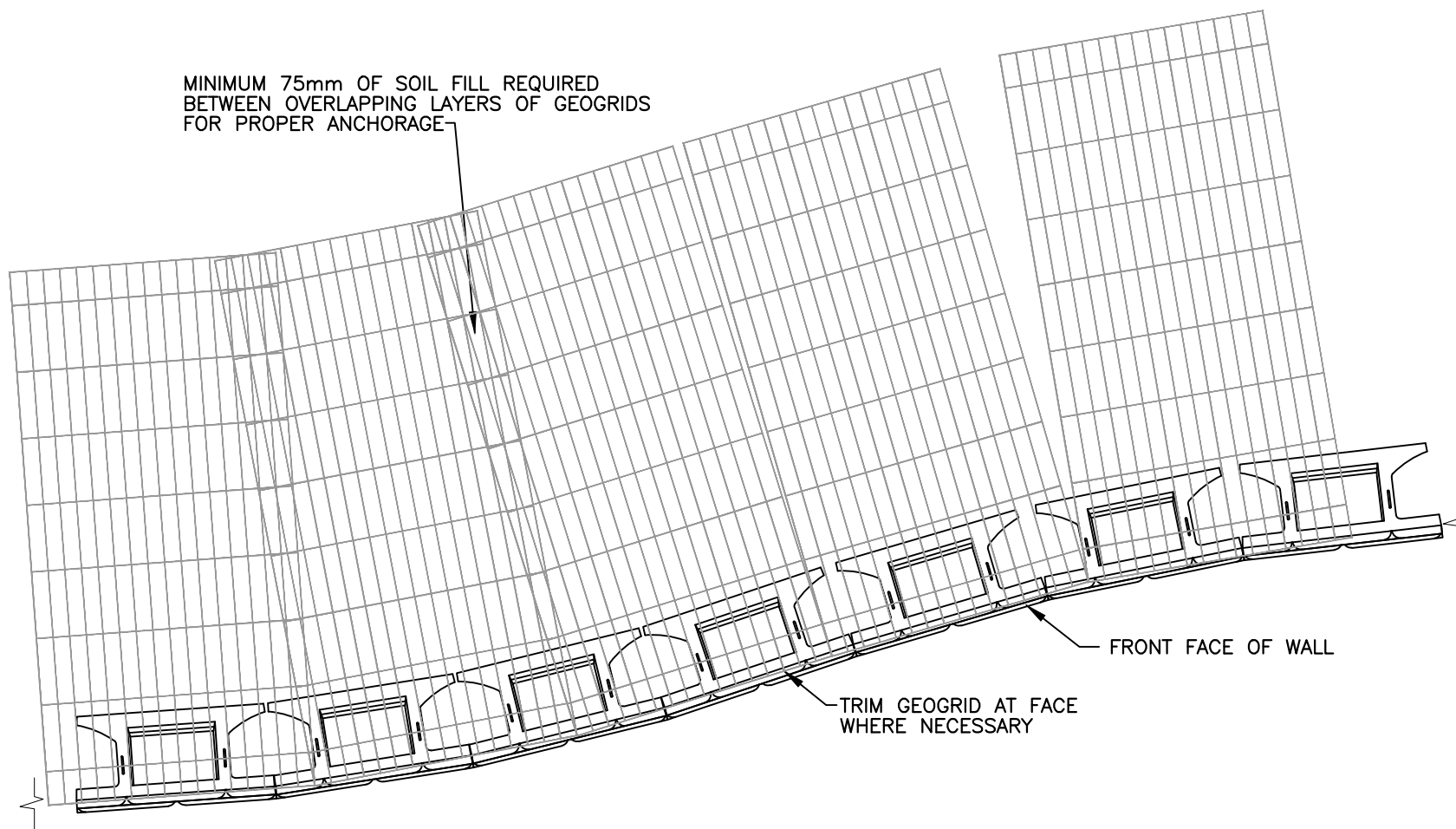
PROJECT

TYPICAL DETAILS
STONE STRONG SYSTEMS

DATE: 4/18/23 FILE: 30_6-44.GridOrient

NOTE:

USE REINFORCED 24-44 UNITS BELOW TOP 3.66m IN GEOGRID REINFORCED WALLS.
SEE FACE AND WEB MESH DETAILS FOR OPTIONAL REINFORCEMENT GRID.



24-44 GEOGRID PLACEMENT ON CURVES

NOT TO SCALE

DISCLAIMER:

These typical details are preliminary and conceptual in nature. They are provided for general information purposes only. Anyone making use of these details and related information does so at their own risk and assumes all liability for such use. Site specific design should be performed by a licensed Professional Engineer based on actual site conditions, materials, and local practices.

Stone Strong LLC retains all common law, statutory, and other reserved rights to these drawings including the copyright. Limited license is granted to copy, reproduce, or modify the details to prepare construction drawings for Stone Strong retaining walls. Stone Strong LLC makes no warranties, either expressed or implied, of merchantability or fitness for any particular purpose, and accepts no responsibility for the accuracy, suitability, or completeness of information contained herein.

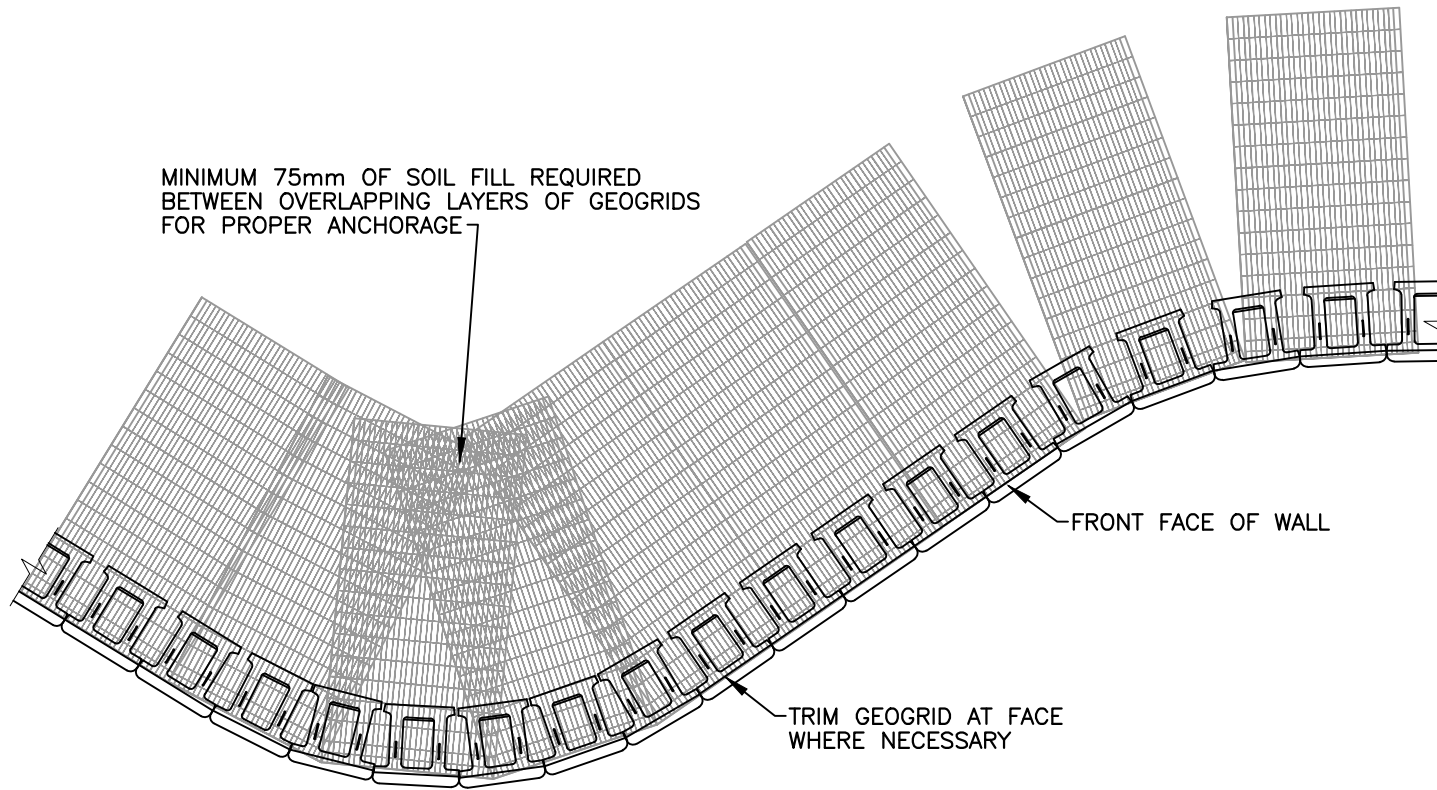


www.stonestrong.com

PROJECT

TYPICAL DETAILS
STONE STRONG SYSTEMS

DATE: 4/18/23 FILE: 31_24-44.Grid.Curves



6-44 GEOGRID PLACEMENT ON CURVES

NOT TO SCALE

DISCLAIMER:

These typical details are preliminary and conceptual in nature. They are provided for general information purposes only. Anyone making use of these details and related information does so at their own risk and assumes all liability for such use. Site specific design should be performed by a licensed Professional Engineer based on actual site conditions, materials, and local practices.

Stone Strong LLC retains all common law, statutory, and other reserved rights to these drawings including the copyright. Limited license is granted to copy, reproduce, or modify the details to prepare construction drawings for Stone Strong retaining walls. Stone Strong LLC makes no warranties, either expressed or implied, of merchantability or fitness for any particular purpose, and accepts no responsibility for the accuracy, suitability, or completeness of information contained herein.

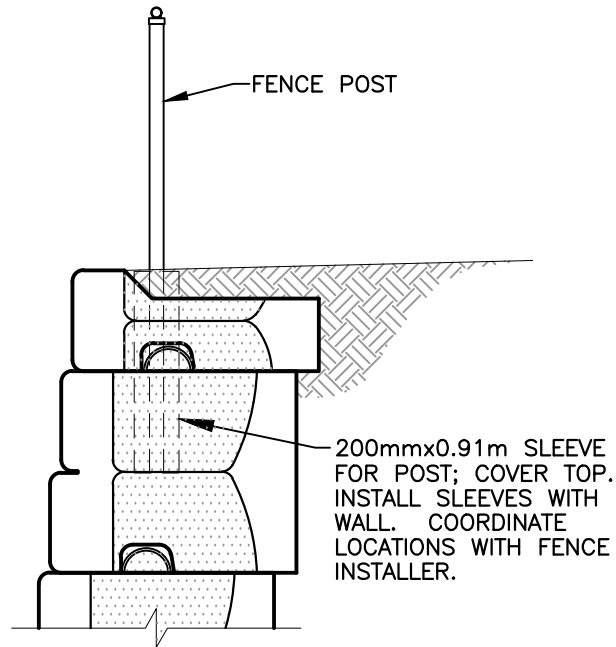


www.stonestrong.com

PROJECT

TYPICAL DETAILS
STONE STRONG SYSTEMS

DATE: 4/18/23 FILE: 32_6-44.Grid.Curves



FENCE SLEEVE

NOT TO SCALE

DISCLAIMER:

These typical details are preliminary and conceptual in nature. They are provided for general information purposes only. Anyone making use of these details and related information does so at their own risk and assumes all liability for such use. Site specific design should be performed by a licensed Professional Engineer based on actual site conditions, materials, and local practices.

Stone Strong LLC retains all common law, statutory, and other reserved rights to these drawings including the copyright. Limited license is granted to copy, reproduce, or modify the details to prepare construction drawings for Stone Strong retaining walls. Stone Strong LLC makes no warranties, either expressed or implied, of merchantability or fitness for any particular purpose, and accepts no responsibility for the accuracy, suitability, or completeness of information contained herein.

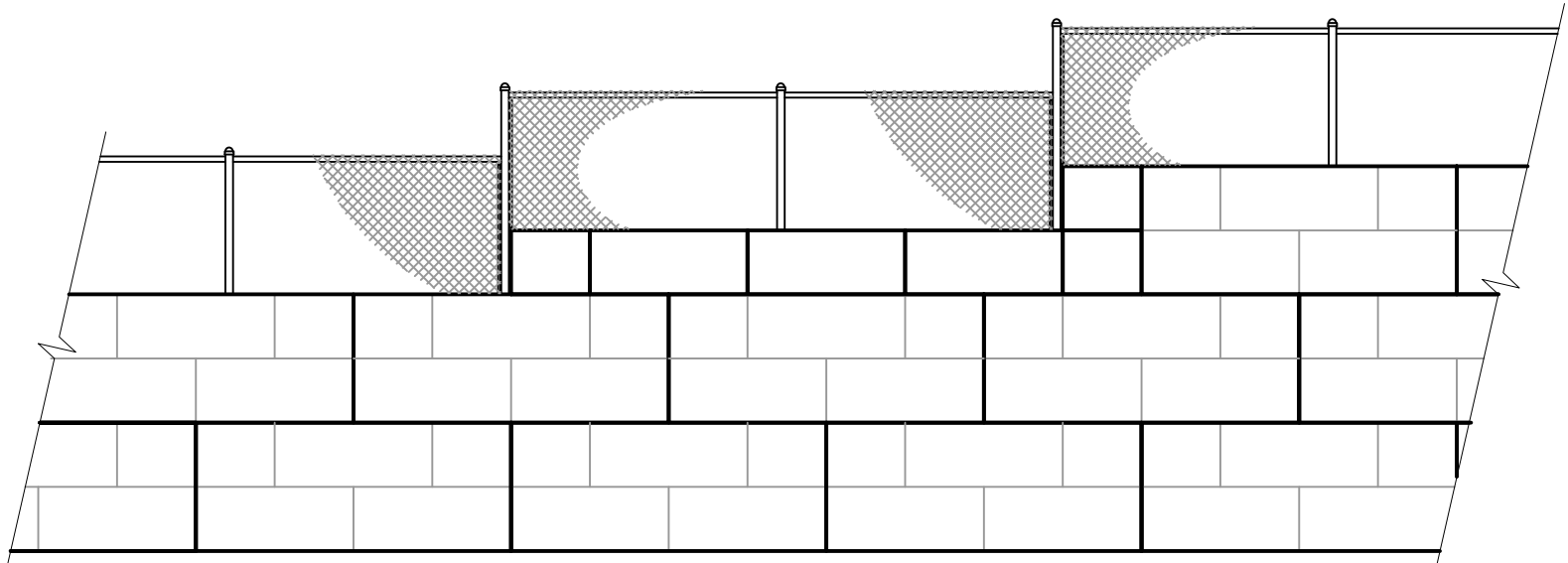


www.stonestrong.com

PROJECT

TYPICAL DETAILS
STONE STRONG SYSTEMS

DATE: 4/18/23 FILE: 33_6-44.FenceSleeve



TYPICAL FENCE CONFIGURATION

NOT TO SCALE

DISCLAIMER:

These typical details are preliminary and conceptual in nature. They are provided for general information purposes only. Anyone making use of these details and related information does so at their own risk and assumes all liability for such use. Site specific design should be performed by a licensed Professional Engineer based on actual site conditions, materials, and local practices.

Stone Strong LLC retains all common law, statutory, and other reserved rights to these drawings including the copyright. Limited license is granted to copy, reproduce, or modify the details to prepare construction drawings for Stone Strong retaining walls. Stone Strong LLC makes no warranties, either expressed or implied, of merchantability or fitness for any particular purpose, and accepts no responsibility for the accuracy, suitability, or completeness of information contained herein.

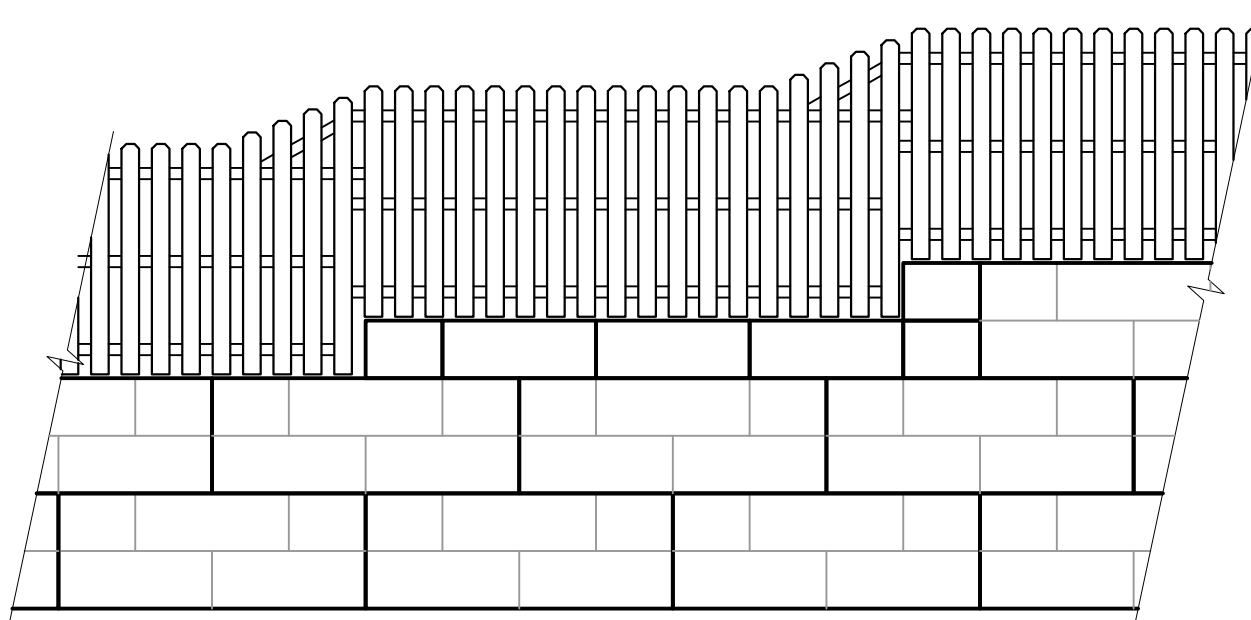


www.stonestrong.com

PROJECT

TYPICAL DETAILS
STONE STRONG SYSTEMS

DATE: 4/18/23 FILE: 34_FenceConfig.Type



ALTERNATE FENCE CONFIGURATION

NOT TO SCALE

DISCLAIMER:

These typical details are preliminary and conceptual in nature. They are provided for general information purposes only. Anyone making use of these details and related information does so at their own risk and assumes all liability for such use. Site specific design should be performed by a licensed Professional Engineer based on actual site conditions, materials, and local practices.

Stone Strong LLC retains all common law, statutory, and other reserved rights to these drawings including the copyright. Limited license is granted to copy, reproduce, or modify the details to prepare construction drawings for Stone Strong retaining walls. Stone Strong LLC makes no warranties, either expressed or implied, of merchantability or fitness for any particular purpose, and accepts no responsibility for the accuracy, suitability, or completeness of information contained herein.

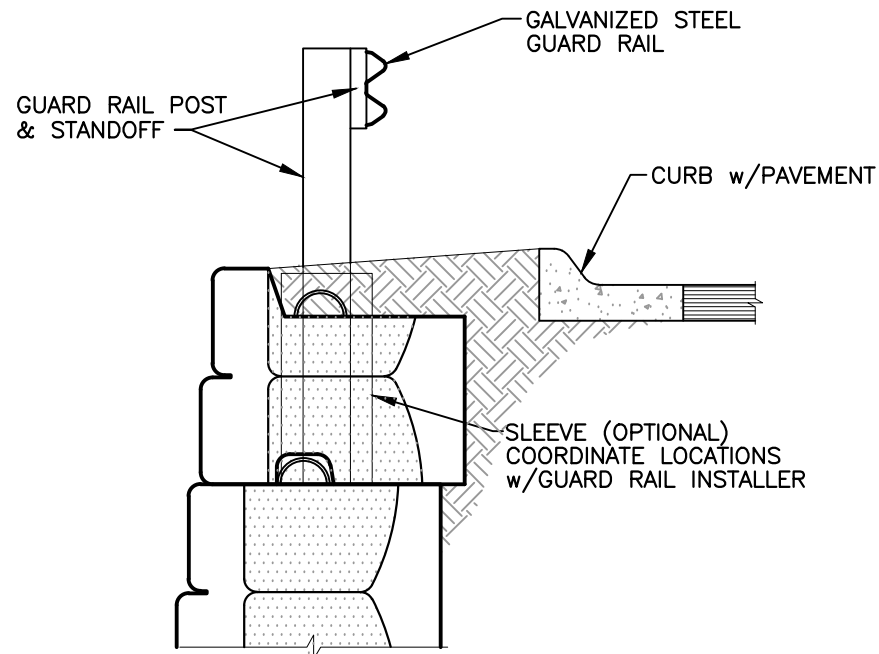


www.stonestrong.com

PROJECT

TYPICAL DETAILS
STONE STRONG SYSTEMS

DATE: 7/27/23 FILE: 35_FenceConfig.Alt



WALL w/GUARD RAIL
NOT TO SCALE

DISCLAIMER:

These typical details are preliminary and conceptual in nature. They are provided for general information purposes only. Anyone making use of these details and related information does so at their own risk and assumes all liability for such use. Site specific design should be performed by a licensed Professional Engineer based on actual site conditions, materials, and local practices.

Stone Strong LLC retains all common law, statutory, and other reserved rights to these drawings including the copyright. Limited license is granted to copy, reproduce, or modify the details to prepare construction drawings for Stone Strong retaining walls. Stone Strong LLC makes no warranties, either expressed or implied, of merchantability or fitness for any particular purpose, and accepts no responsibility for the accuracy, suitability, or completeness of information contained herein.

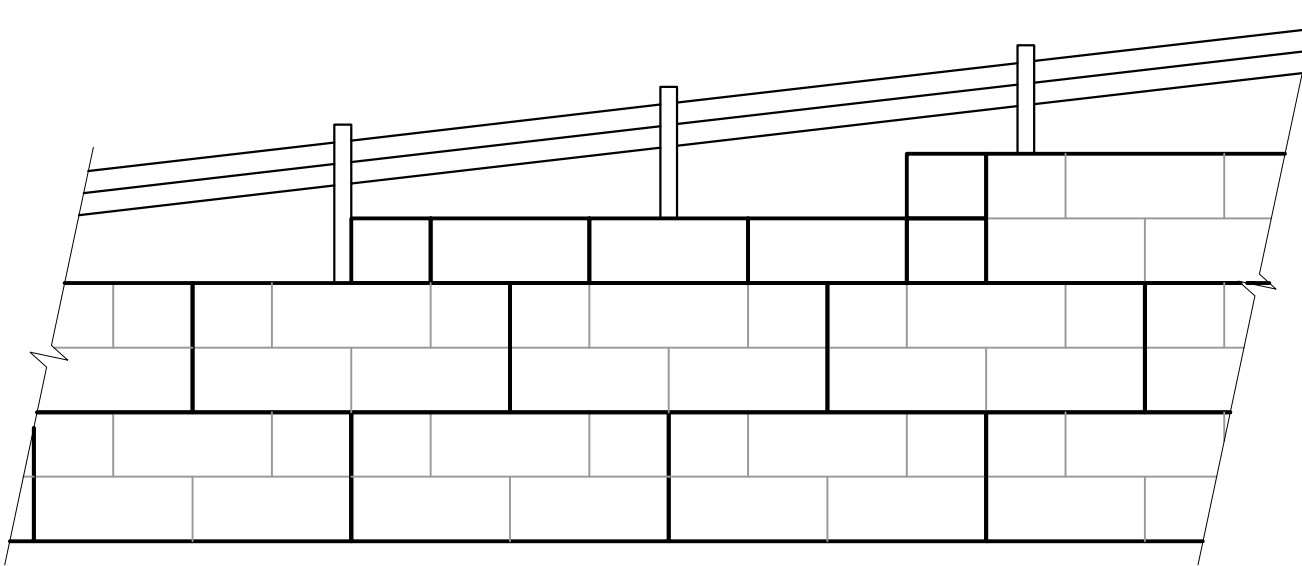


www.stonestrong.com

PROJECT

TYPICAL DETAILS
STONE STRONG SYSTEMS

DATE: 4/18/23 FILE: 36_GuardRail



TYPICAL GUARDRAIL CONFIGURATION
NOT TO SCALE

DISCLAIMER:

These typical details are preliminary and conceptual in nature. They are provided for general information purposes only. Anyone making use of these details and related information does so at their own risk and assumes all liability for such use. Site specific design should be performed by a licensed Professional Engineer based on actual site conditions, materials, and local practices.

Stone Strong LLC retains all common law, statutory, and other reserved rights to these drawings including the copyright. Limited license is granted to copy, reproduce, or modify the details to prepare construction drawings for Stone Strong retaining walls. Stone Strong LLC makes no warranties, either expressed or implied, of merchantability or fitness for any particular purpose, and accepts no responsibility for the accuracy, suitability, or completeness of information contained herein.



www.stonestrong.com

PROJECT

TYPICAL DETAILS
STONE STRONG SYSTEMS

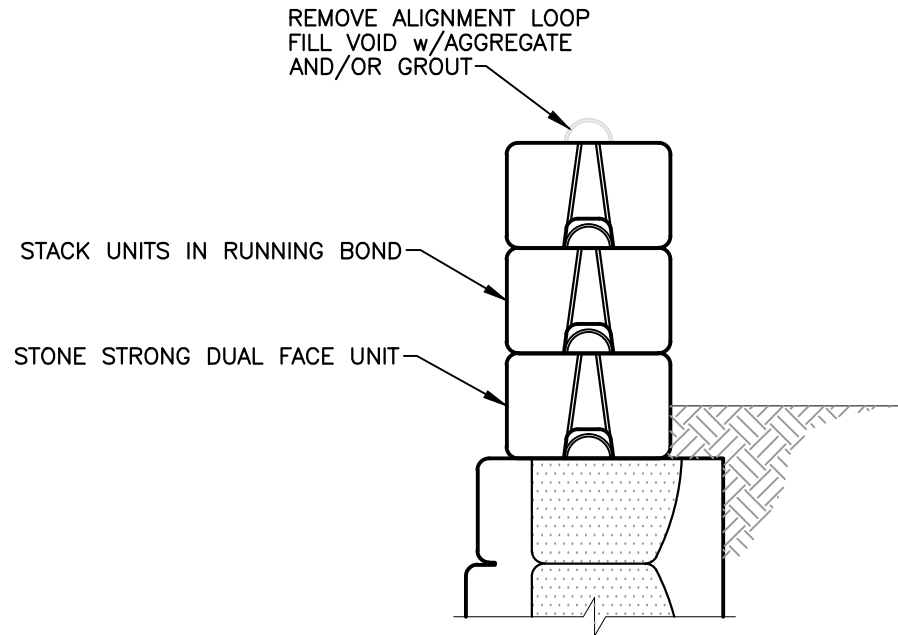
DATE: 4/18/23 FILE: 37_GuardRail.Config

AT ELEVATION STEPS AT THE TOP OF BATTERED FACING UNITS, ADJUST ALIGNMENT OF DUAL FACE UNITS BY CUTTING/BENDING LIFTING LOOPS ON UNIT BELOW TO CREATE A SMOOTH TRANSITION.

ON RADIUSSED SECTIONS OF WALL, FIELD-TRIM ABUTTING SURFACES OF DUAL FACE UNITS TO ALLOW FLUSH FITMENT BETWEEN UNITS.

NOTE:

NO REPRESENTATION IS MADE ON STRENGTH OR CAPACITY OF PARAPET FOR BARRIER USE. USER SHOULD DETERMINE CAPABILITY OR SUITABILITY FOR INTENDED APPLICATION.



DUAL FACE PARAPET WALL

NOT TO SCALE

CHECK ON AVAILABILITY OF ALL UNITS w/LOCAL PRODUCER/DEALER. SOME UNITS MAY HAVE LIMITED AVAILABILITY.

DISCLAIMER:

These typical details are preliminary and conceptual in nature. They are provided for general information purposes only. Anyone making use of these details and related information does so at their own risk and assumes all liability for such use. Site specific design should be performed by a licensed Professional Engineer based on actual site conditions, materials, and local practices.

Stone Strong LLC retains all common law, statutory, and other reserved rights to these drawings including the copyright. Limited license is granted to copy, reproduce, or modify the details to prepare construction drawings for Stone Strong retaining walls. Stone Strong LLC makes no warranties, either expressed or implied, of merchantability or fitness for any particular purpose, and accepts no responsibility for the accuracy, suitability, or completeness of information contained herein.



www.stonestrong.com

PROJECT

TYPICAL DETAILS
STONE STRONG SYSTEMS

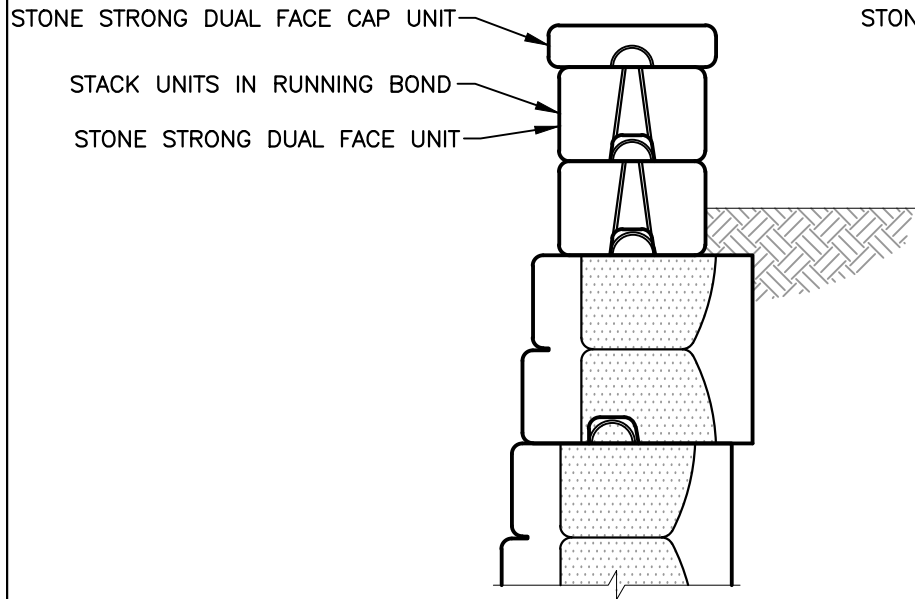
DATE: 4/18/23 FILE: 38_DF.Parapet

AT ELEVATION STEPS AT THE TOP OF BATTERED FACING UNITS, ADJUST ALIGNMENT OF DUAL FACE UNITS BY CUTTING/BENDING LIFTING LOOPS ON UNIT BELOW TO CREATE A SMOOTH TRANSITION.

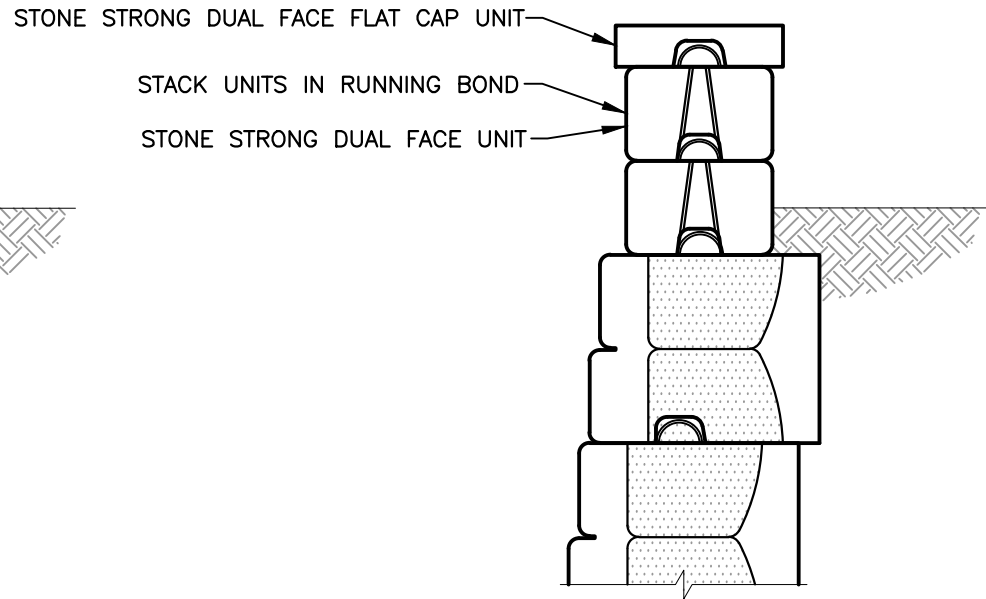
ON RADIUSSED SECTIONS OF WALL, FIELD-TRIM ABUTTING SURFACES OF DUAL FACE UNITS TO ALLOW FLUSH FITMENT BETWEEN UNITS.

NOTE:

NO REPRESENTATION IS MADE ON STRENGTH OR CAPACITY OF PARAPET FOR BARRIER USE. USER SHOULD DETERMINE CAPABILITY OR SUITABILITY FOR INTENDED APPLICATION.



DUAL FACE PARAPET
WALL w/CAP
NOT TO SCALE



DUAL FACE PARAPET
WALL w/FLAT CAP
NOT TO SCALE

DISCLAIMER:

These typical details are preliminary and conceptual in nature. They are provided for general information purposes only. Anyone making use of these details and related information does so at their own risk and assumes all liability for such use. Site specific design should be performed by a licensed Professional Engineer based on actual site conditions, materials, and local practices.

Stone Strong LLC retains all common law, statutory, and other reserved rights to these drawings including the copyright. Limited license is granted to copy, reproduce, or modify the details to prepare construction drawings for Stone Strong retaining walls. Stone Strong LLC makes no warranties, either expressed or implied, of merchantability or fitness for any particular purpose, and accepts no responsibility for the accuracy, suitability, or completeness of information contained herein.

CHECK ON AVAILABILITY OF ALL UNITS w/LOCAL PRODUCER/DEALER. SOME UNITS MAY HAVE LIMITED AVAILABILITY.



www.stonestrong.com

PROJECT

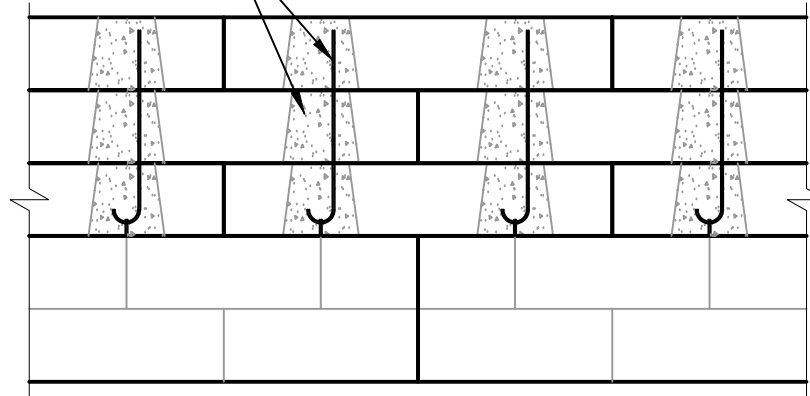
TYPICAL DETAILS
STONE STRONG SYSTEMS

DATE: 4/18/23 FILE: 39_DF.Parapet.Cap

NOTE:

NO REPRESENTATION IS MADE ON STRENGTH OR CAPACITY FOR BARRIER APPLICATION. USER SHOULD DETERMINE CAPABILITY OR SUITABILITY FOR INTENDED APPLICATION.

REINFORCE & GROUT VOIDS TO INCREASE
PARAPET STRENGTH PER SPECIFIC APPLICATION



OPTIONAL PARAPET REINFORCEMENT

NOT TO SCALE

CHECK ON AVAILABILITY OF ALL UNITS w/LOCAL PRODUCER/
DEALER. SOME UNITS MAY HAVE LIMITED AVAILABILITY.

DISCLAIMER:

These typical details are preliminary and conceptual in nature. They are provided for general information purposes only. Anyone making use of these details and related information does so at their own risk and assumes all liability for such use. Site specific design should be performed by a licensed Professional Engineer based on actual site conditions, materials, and local practices.

Stone Strong LLC retains all common law, statutory, and other reserved rights to these drawings including the copyright. Limited license is granted to copy, reproduce, or modify the details to prepare construction drawings for Stone Strong retaining walls. Stone Strong LLC makes no warranties, either expressed or implied, of merchantability or fitness for any particular purpose, and accepts no responsibility for the accuracy, suitability, or completeness of information contained herein.



www.stonestrong.com

PROJECT

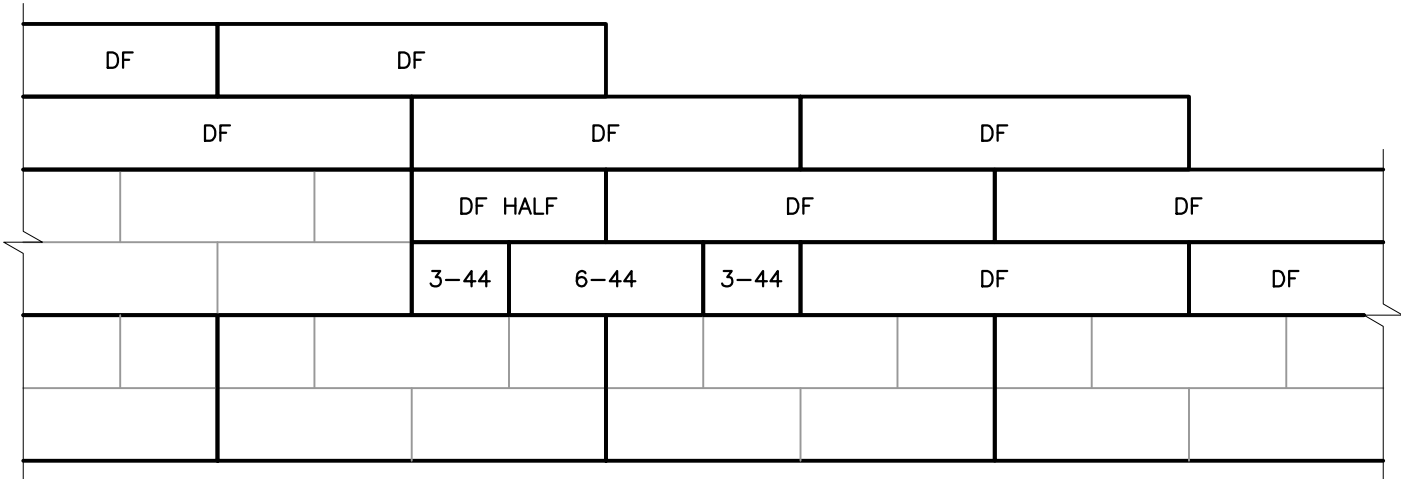
TYPICAL DETAILS
STONE STRONG SYSTEMS

DATE: 4/18/23 FILE: 40_DF.Parapet.Reinforce

AT ELEVATION STEPS AT THE TOP OF BATTERED FACING UNITS, ADJUST ALIGNMENT OF DUAL FACE UNITS BY CUTTING/BENDING LIFTING LOOPS ON UNIT BELOW TO CREATE A SMOOTH TRANSITION.

ON RADIUSSED SECTIONS OF WALL, FIELD-TRIM ABUTTING SURFACES OF DUAL FACE UNITS TO ALLOW FLUSH FITMENT BETWEEN UNITS.

NOTE:
USER SHOULD DETERMINE CAPABILITY OR SUITABILITY OF PARAPET FOR BARRIER LOADING.



DUAL FACE PARAPET WALL STEP
NOT TO SCALE

CHECK ON AVAILABILITY OF ALL UNITS w/LOCAL PRODUCER/DEALER. SOME UNITS MAY HAVE LIMITED AVAILABILITY.

DISCLAIMER:
These typical details are preliminary and conceptual in nature. They are provided for general information purposes only. Anyone making use of these details and related information does so at their own risk and assumes all liability for such use. Site specific design should be performed by a licensed Professional Engineer based on actual site conditions, materials, and local practices.

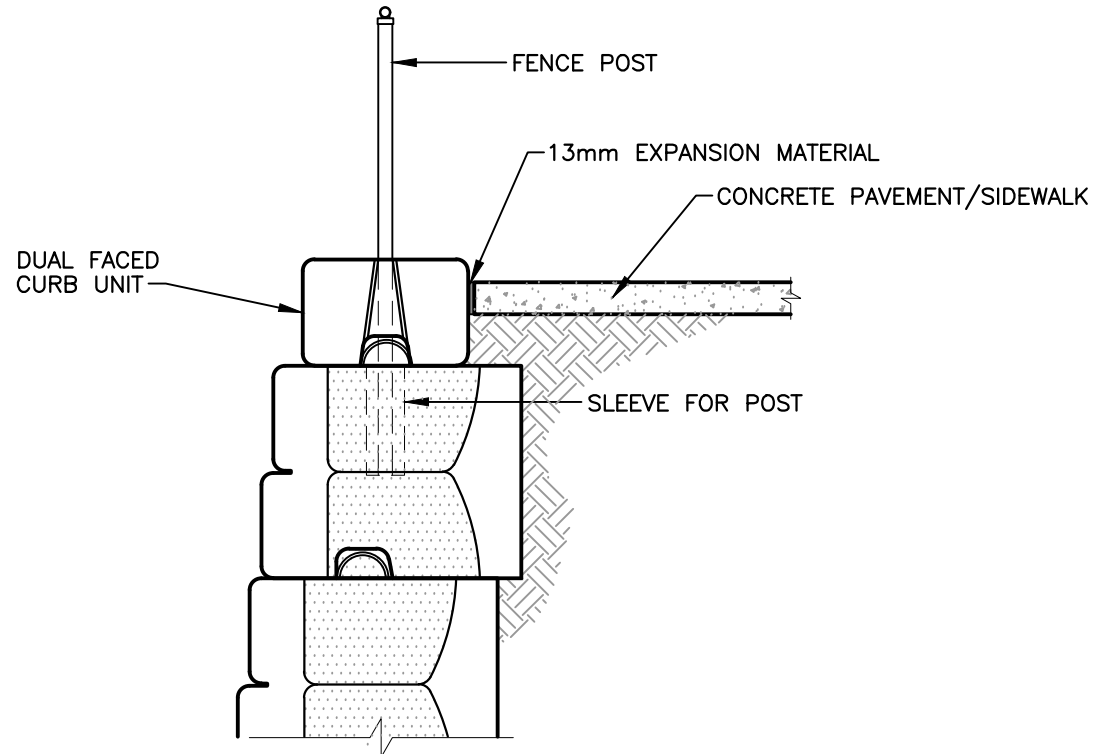
Stone Strong LLC retains all common law, statutory, and other reserved rights to these drawings including the copyright. Limited license is granted to copy, reproduce, or modify the details to prepare construction drawings for Stone Strong retaining walls. Stone Strong LLC makes no warranties, either expressed or implied, of merchantability or fitness for any particular purpose, and accepts no responsibility for the accuracy, suitability, or completeness of information contained herein.



www.stonestrong.com

PROJECT
TYPICAL DETAILS
STONE STRONG SYSTEMS

DATE: 4/18/23 FILE: 41_DF.Parapet.Step



DUAL FACE CURB w/SIDEWALK

NOT TO SCALE

CHECK ON AVAILABILITY OF ALL UNITS w/LOCAL PRODUCER/DEALER. SOME UNITS MAY HAVE LIMITED AVAILABILITY.

DISCLAIMER:

These typical details are preliminary and conceptual in nature. They are provided for general information purposes only. Anyone making use of these details and related information does so at their own risk and assumes all liability for such use. Site specific design should be performed by a licensed Professional Engineer based on actual site conditions, materials, and local practices.

Stone Strong LLC retains all common law, statutory, and other reserved rights to these drawings including the copyright. Limited license is granted to copy, reproduce, or modify the details to prepare construction drawings for Stone Strong retaining walls. Stone Strong LLC makes no warranties, either expressed or implied, of merchantability or fitness for any particular purpose, and accepts no responsibility for the accuracy, suitability, or completeness of information contained herein.



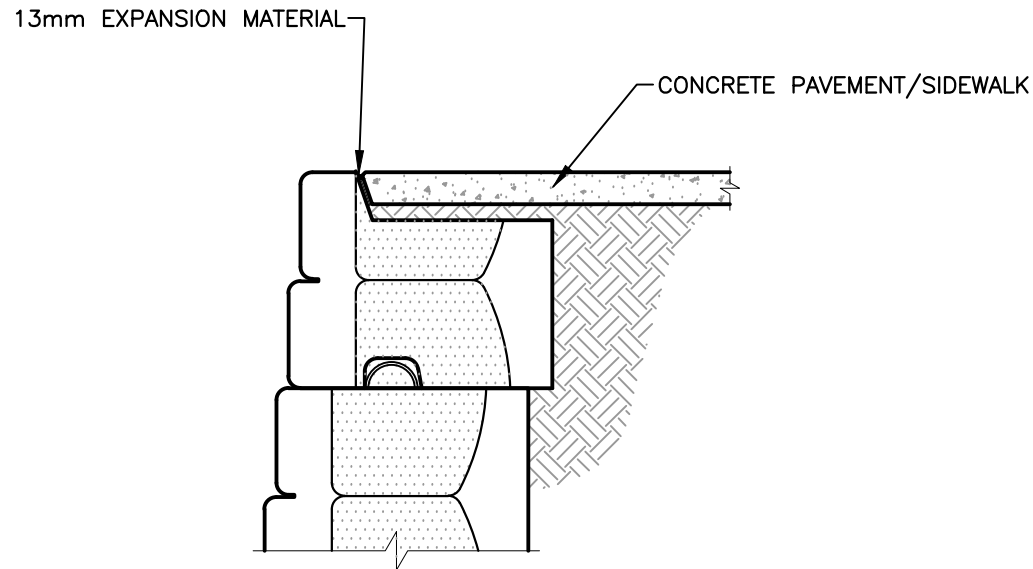
www.stonestrong.com

PROJECT

TYPICAL DETAILS
STONE STRONG SYSTEMS

DATE: 4/18/23 FILE: 42_DF.Sidewalk

NOTE:
FOR LEVEL GRADES ONLY. CONSIDER
STEP TRANSITIONS FOR SLOPING
GRADES.



TOP OF WALL w/SIDEWALK
NOT TO SCALE

DISCLAIMER:

These typical details are preliminary and conceptual in nature. They are provided for general information purposes only. Anyone making use of these details and related information does so at their own risk and assumes all liability for such use. Site specific design should be performed by a licensed Professional Engineer based on actual site conditions, materials, and local practices.

Stone Strong LLC retains all common law, statutory, and other reserved rights to these drawings including the copyright. Limited license is granted to copy, reproduce, or modify the details to prepare construction drawings for Stone Strong retaining walls. Stone Strong LLC makes no warranties, either expressed or implied, of merchantability or fitness for any particular purpose, and accepts no responsibility for the accuracy, suitability, or completeness of information contained herein.



www.stonestrong.com

PROJECT

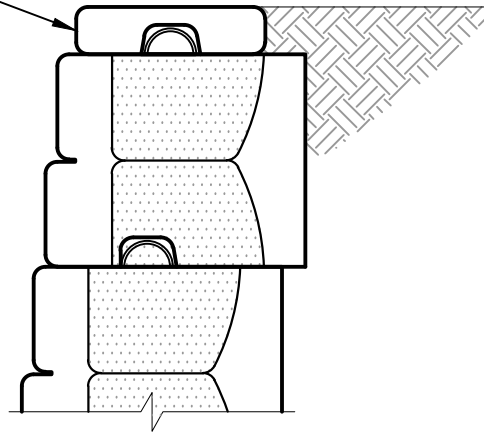
TYPICAL DETAILS
STONE STRONG SYSTEMS

DATE: 4/18/23 FILE: 43_24-44.Sidewalk

NOTE:

CAP UNIT IS OPTIONAL. TOP OF WALL IS
FITTED w/TOP UNIT IN MOST APPLICATIONS.

STONE STRONG DUAL FACE CAP UNIT



STONE STRONG CAP UNIT

NOT TO SCALE

CHECK ON AVAILABILITY OF ALL UNITS w/LOCAL PRODUCER/
DEALER. SOME UNITS MAY HAVE LIMITED AVAILABILITY.

DISCLAIMER:

These typical details are preliminary and conceptual in nature. They are provided for general information purposes only. Anyone making use of these details and related information does so at their own risk and assumes all liability for such use. Site specific design should be performed by a licensed Professional Engineer based on actual site conditions, materials, and local practices.

Stone Strong LLC retains all common law, statutory, and other reserved rights to these drawings including the copyright. Limited license is granted to copy, reproduce, or modify the details to prepare construction drawings for Stone Strong retaining walls. Stone Strong LLC makes no warranties, either expressed or implied, of merchantability or fitness for any particular purpose, and accepts no responsibility for the accuracy, suitability, or completeness of information contained herein.

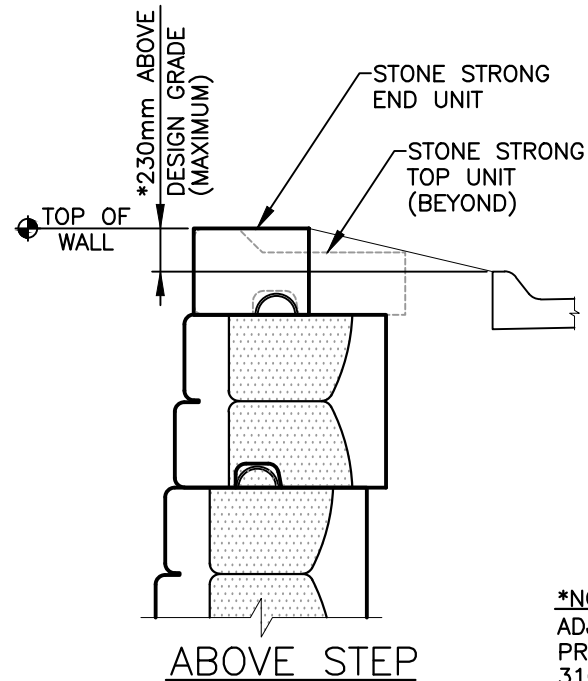
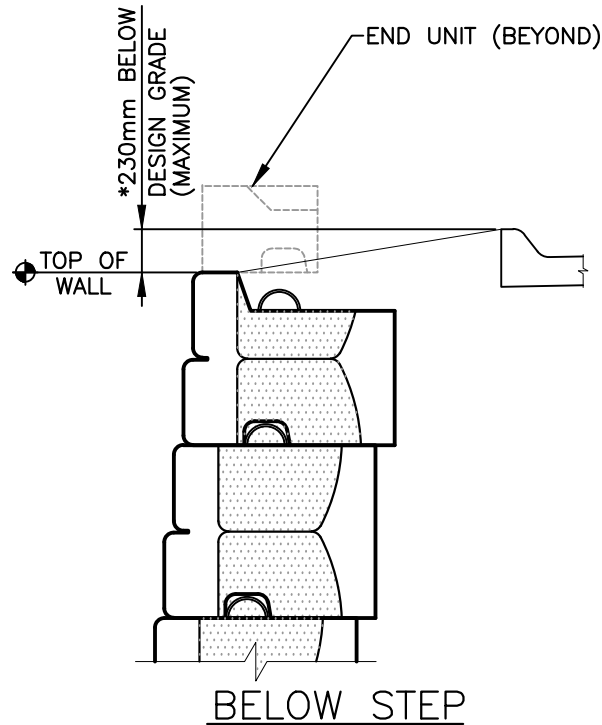


www.stonestrong.com

PROJECT

TYPICAL DETAILS
STONE STRONG SYSTEMS

DATE: 4/18/23 FILE: 44_24-44.Cap.XSec



***NOTE:**

ADJUST GRADE SPLIT BASED UPON SPECIFIC PROJECT REQUIREMENTS. 150MM ABOVE/ 310mm BELOW SPLIT IS ALSO COMMON. TURN END UNIT TO RETURN 1.2m IF THERE ARE NO NEARBY OBSTACLES.

TOP OF WALL TREATMENT AT 18" WALL STEPS

NOT TO SCALE

DISCLAIMER:

These typical details are preliminary and conceptual in nature. They are provided for general information purposes only. Anyone making use of these details and related information does so at their own risk and assumes all liability for such use. Site specific design should be performed by a licensed Professional Engineer based on actual site conditions, materials, and local practices.

Stone Strong LLC retains all common law, statutory, and other reserved rights to these drawings including the copyright. Limited license is granted to copy, reproduce, or modify the details to prepare construction drawings for Stone Strong retaining walls. Stone Strong LLC makes no warranties, either expressed or implied, of merchantability or fitness for any particular purpose, and accepts no responsibility for the accuracy, suitability, or completeness of information contained herein.

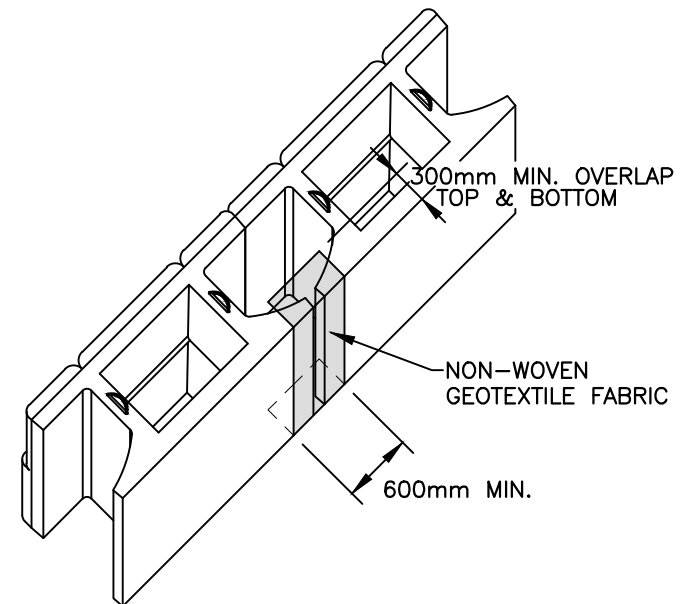
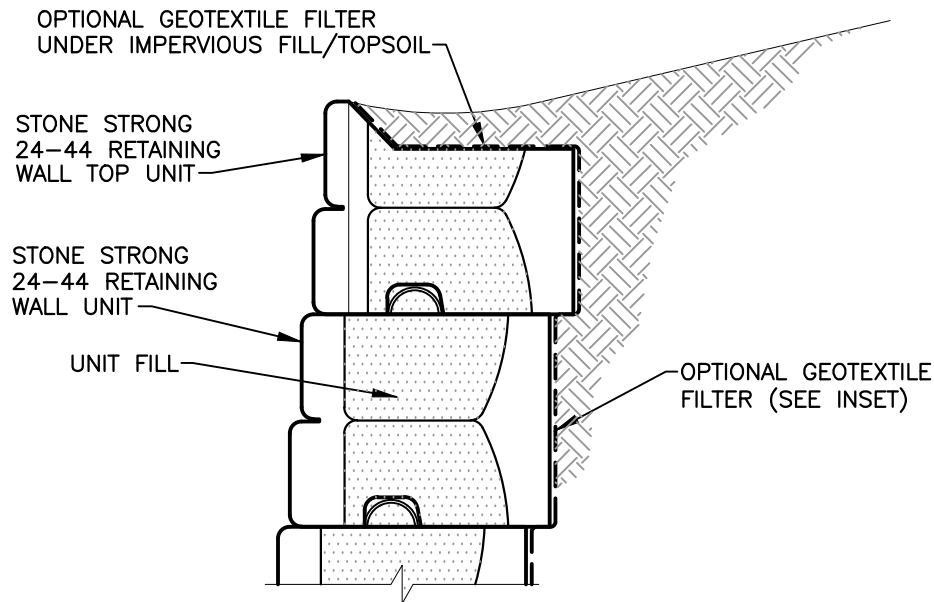


www.stonestrong.com

PROJECT

TYPICAL DETAILS
STONE STRONG SYSTEMS

DATE: 4/18/23 FILE: 45_24-44.GradeSplit



OPTIONAL GEOTEXTILE FILTER

NOT TO SCALE

DISCLAIMER:

These typical details are preliminary and conceptual in nature. They are provided for general information purposes only. Anyone making use of these details and related information does so at their own risk and assumes all liability for such use. Site specific design should be performed by a licensed Professional Engineer based on actual site conditions, materials, and local practices.

Stone Strong LLC retains all common law, statutory, and other reserved rights to these drawings including the copyright. Limited license is granted to copy, reproduce, or modify the details to prepare construction drawings for Stone Strong retaining walls. Stone Strong LLC makes no warranties, either expressed or implied, of merchantability or fitness for any particular purpose, and accepts no responsibility for the accuracy, suitability, or completeness of information contained herein.



www.stonestrong.com

PROJECT

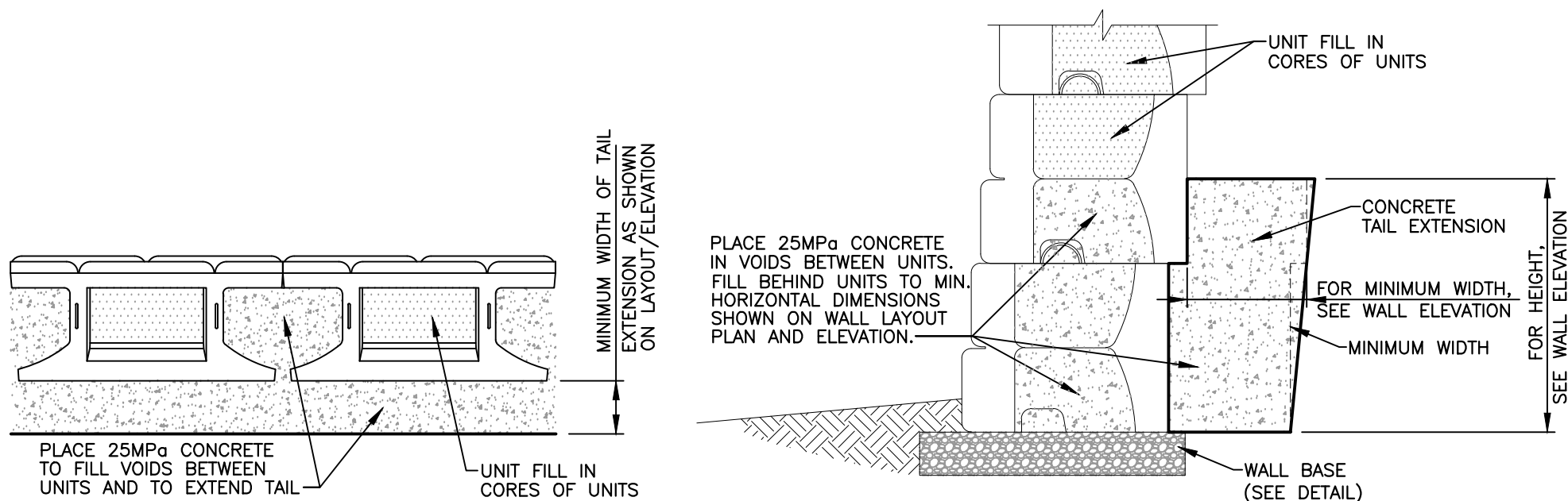
TYPICAL DETAILS
STONE STRONG SYSTEMS

DATE: 4/18/23 FILE: 46_24-44.XSec.Filter

NOTE:

ON CONVEX CURVES, PROVIDE REINFORCEMENT TO ATTACH EXTENSION DUE TO REDUCED OPENING WIDTH BETWEEN TAILS.

TAIL EXTENSION HEIGHT SHOULD TYPICALLY BE AT LEAST 2 TIMES WIDTH, UNLESS REINFORCED.



24-44 CONCRETE TAIL EXTENSION DETAIL (CAST-IN-PLACE)

NOT TO SCALE

DISCLAIMER:

These typical details are preliminary and conceptual in nature. They are provided for general information purposes only. Anyone making use of these details and related information does so at their own risk and assumes all liability for such use. Site specific design should be performed by a licensed Professional Engineer based on actual site conditions, materials, and local practices.

Stone Strong LLC retains all common law, statutory, and other reserved rights to these drawings including the copyright. Limited license is granted to copy, reproduce, or modify the details to prepare construction drawings for Stone Strong retaining walls. Stone Strong LLC makes no warranties, either expressed or implied, of merchantability or fitness for any particular purpose, and accepts no responsibility for the accuracy, suitability, or completeness of information contained herein.



www.stonestrong.com

PROJECT

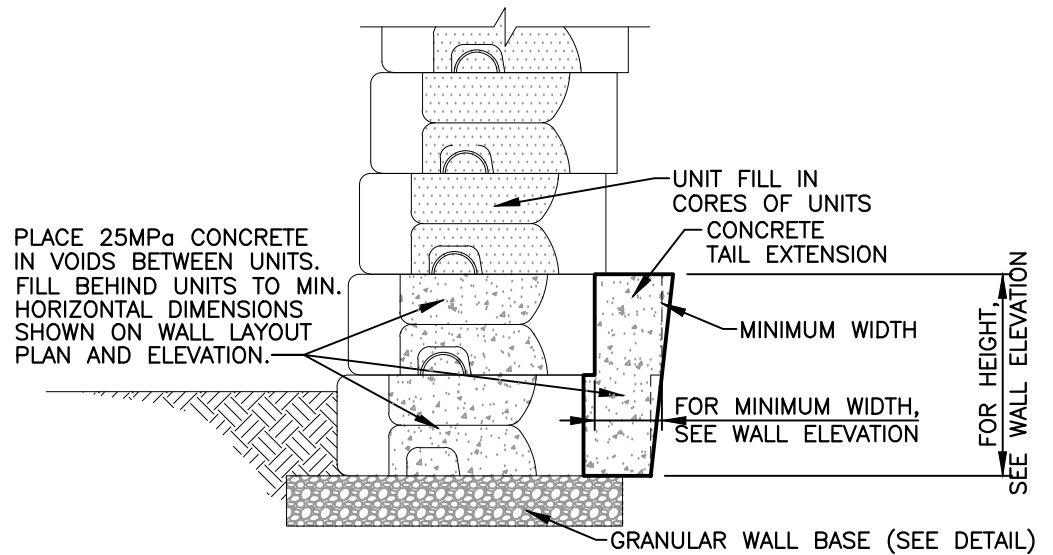
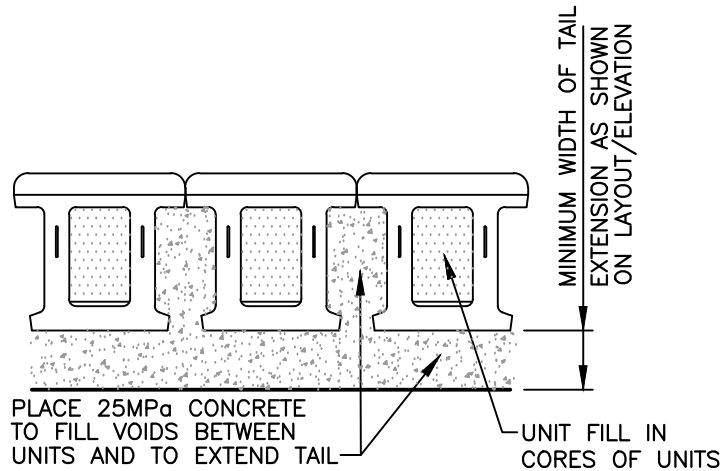
TYPICAL DETAILS
STONE STRONG SYSTEMS

DATE: 4/18/23 FILE: 47_24-44.TailExt.CIP

NOTE:

ON CONVEX CURVES, PROVIDE REINFORCEMENT TO ATTACH EXTENSION DUE TO REDUCED OPENING WIDTH BETWEEN TAILS.

TAIL EXTENSION HEIGHT SHOULD TYPICALLY BE AT LEAST 2 TIMES WIDTH, UNLESS REINFORCED.



6-44 CONCRETE TAIL EXTENSION DETAIL (CAST-IN-PLACE)

NOT TO SCALE

DISCLAIMER:

These typical details are preliminary and conceptual in nature. They are provided for general information purposes only. Anyone making use of these details and related information does so at their own risk and assumes all liability for such use. Site specific design should be performed by a licensed Professional Engineer based on actual site conditions, materials, and local practices.

Stone Strong LLC retains all common law, statutory, and other reserved rights to these drawings including the copyright. Limited license is granted to copy, reproduce, or modify the details to prepare construction drawings for Stone Strong retaining walls. Stone Strong LLC makes no warranties, either expressed or implied, of merchantability or fitness for any particular purpose, and accepts no responsibility for the accuracy, suitability, or completeness of information contained herein.



www.stonestrong.com

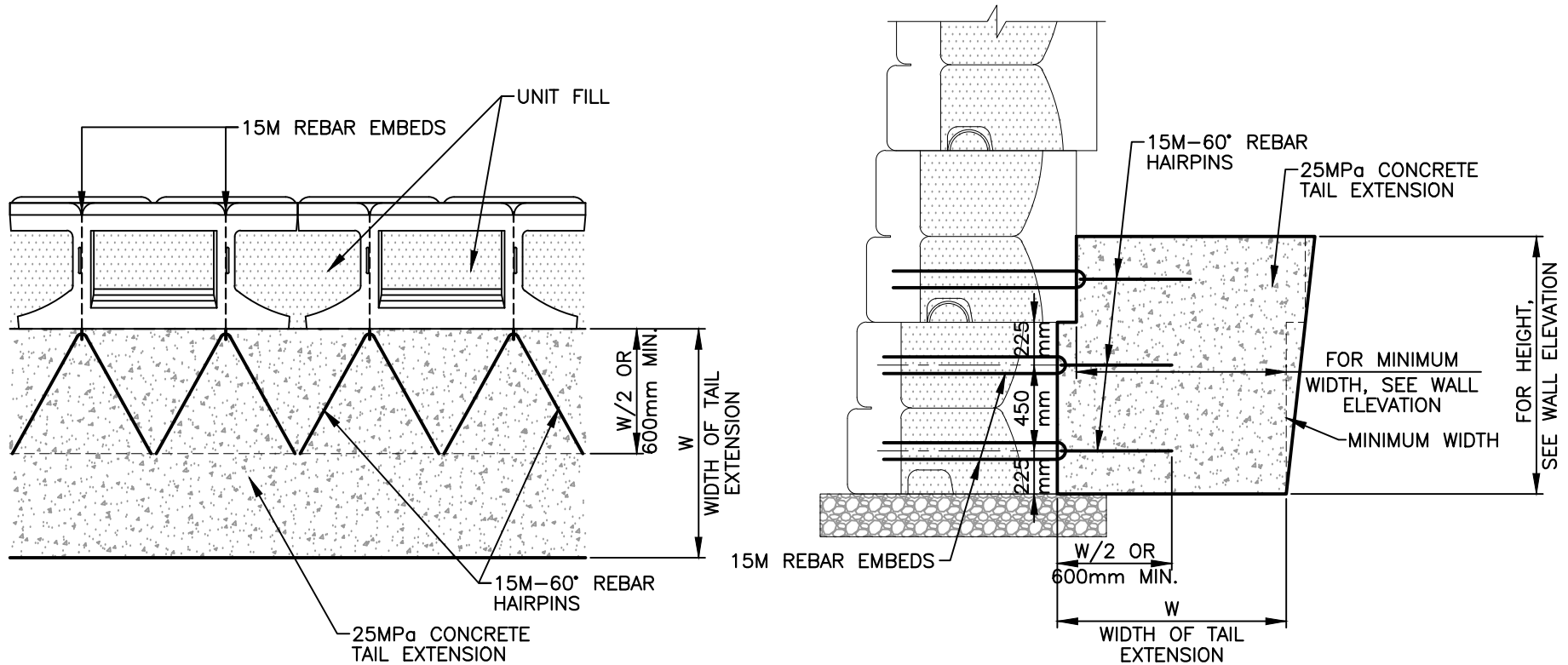
PROJECT

TYPICAL DETAILS
STONE STRONG SYSTEMS

DATE: 4/18/23 FILE: 48_6-44.TailExt.CIP

NOTE:

USE REBAR-TIED TAIL EXTENSIONS
ON CONVEX CURVES OR TO ELIMINATE
CONCRETE IN VOID BETWEEN UNITS



24-44 REBAR-TIED CONCRETE TAIL EXTENSION (CAST-IN-PLACE)

NOT TO SCALE

DISCLAIMER:

These typical details are preliminary and conceptual in nature. They are provided for general information purposes only. Anyone making use of these details and related information does so at their own risk and assumes all liability for such use. Site specific design should be performed by a licensed Professional Engineer based on actual site conditions, materials, and local practices.

Stone Strong LLC retains all common law, statutory, and other reserved rights to these drawings including the copyright. Limited license is granted to copy, reproduce, or modify the details to prepare construction drawings for Stone Strong retaining walls. Stone Strong LLC makes no warranties, either expressed or implied, of merchantability or fitness for any particular purpose, and accepts no responsibility for the accuracy, suitability, or completeness of information contained herein.



www.stonestrong.com

PROJECT

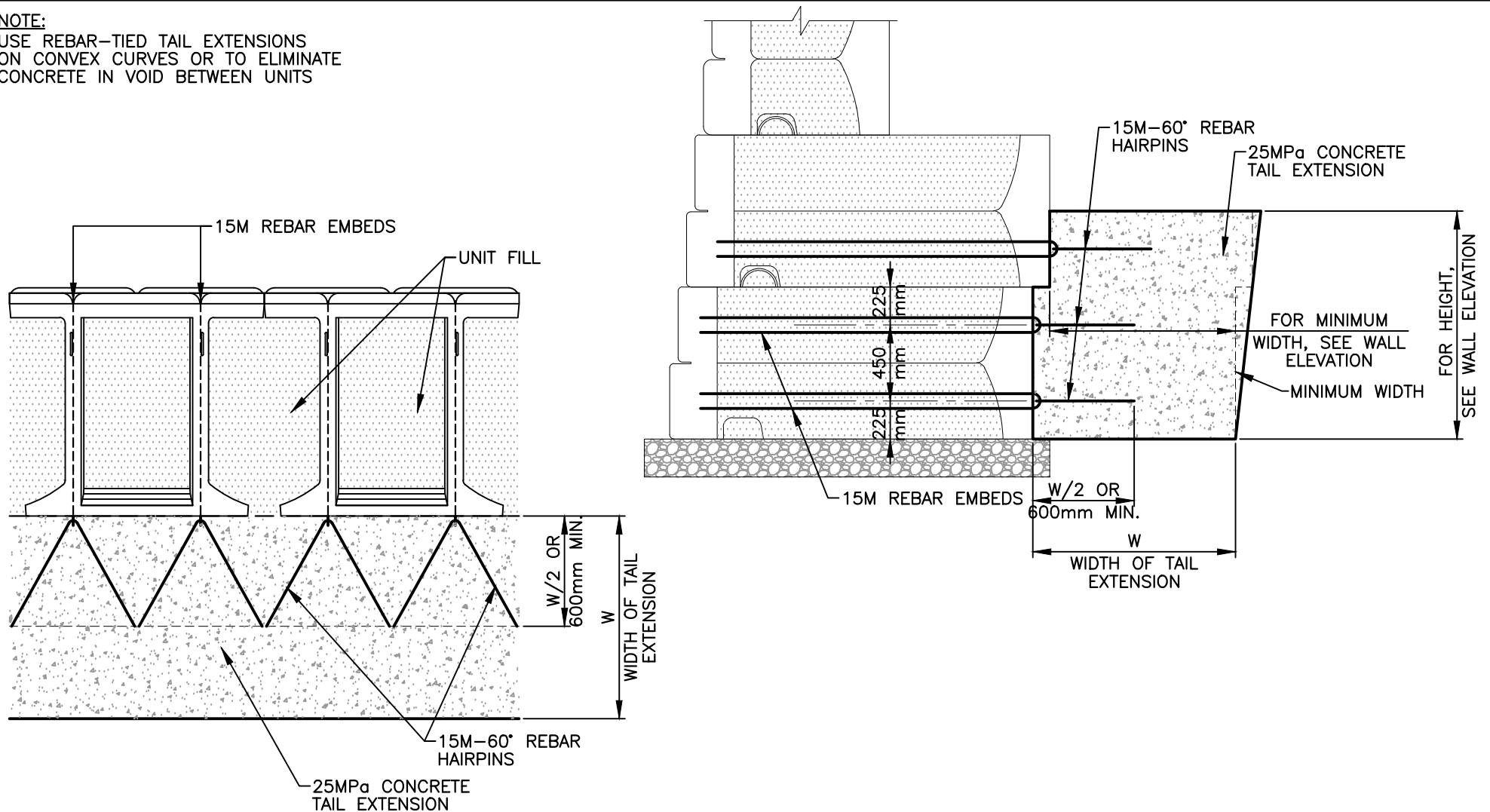
TYPICAL DETAILS
STONE STRONG SYSTEMS

DATE: 4/18/23

FILE: 49_TailExt.Rebar.Tied

NOTE:

USE REBAR-TIED TAIL EXTENSIONS
ON CONVEX CURVES OR TO ELIMINATE
CONCRETE IN VOID BETWEEN UNITS



24-86 REBAR-TIED CONCRETE TAIL EXTENSION (CAST-IN-PLACE)

NOT TO SCALE

DISCLAIMER:

These typical details are preliminary and conceptual in nature. They are provided for general information purposes only. Anyone making use of these details and related information does so at their own risk and assumes all liability for such use. Site specific design should be performed by a licensed Professional Engineer based on actual site conditions, materials, and local practices.

Stone Strong LLC retains all common law, statutory, and other reserved rights to these drawings including the copyright. Limited license is granted to copy, reproduce, or modify the details to prepare construction drawings for Stone Strong retaining walls. Stone Strong LLC makes no warranties, either expressed or implied, of merchantability or fitness for any particular purpose, and accepts no responsibility for the accuracy, suitability, or completeness of information contained herein.



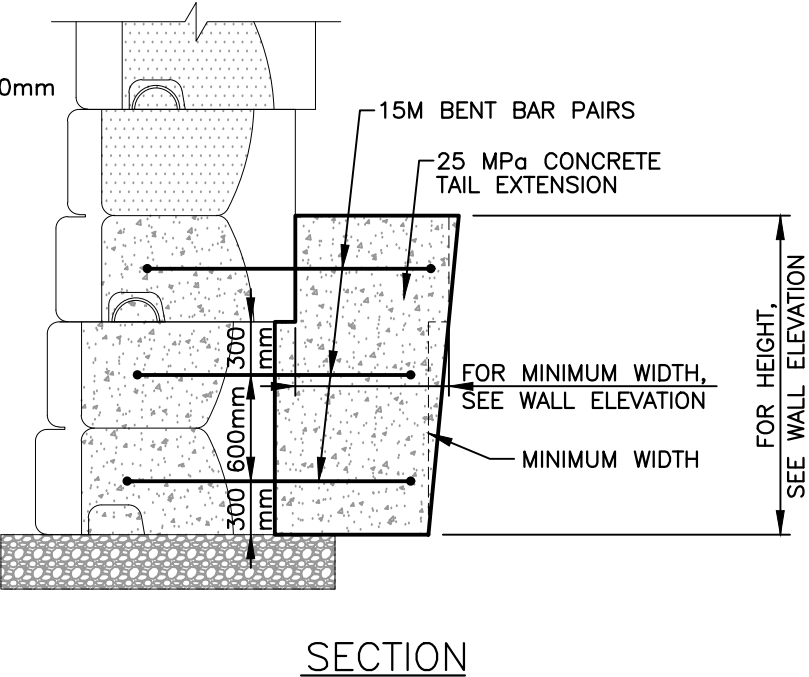
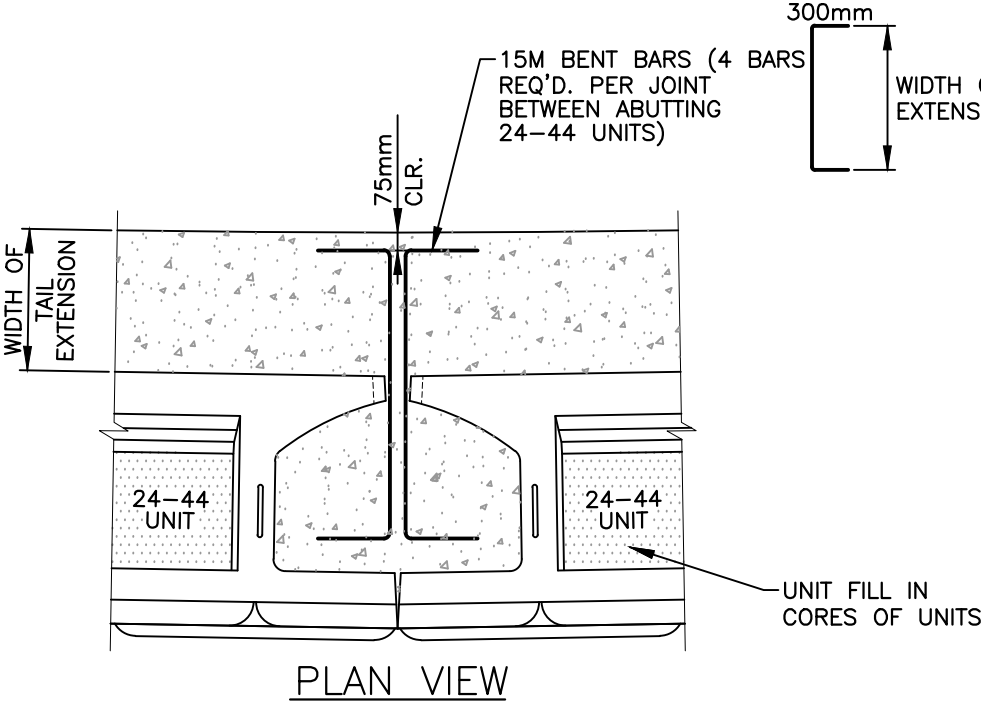
www.stonestrong.com

PROJECT

TYPICAL DETAILS
STONE STRONG SYSTEMS

DATE: 4/18/23 FILE: 50_24-86 TailExt.Rebar Tied


NOTE: USE REINFORCED CONNECTION ON CONVEX CURVES WHERE GAP BETWEEN TAILS IS REDUCED.



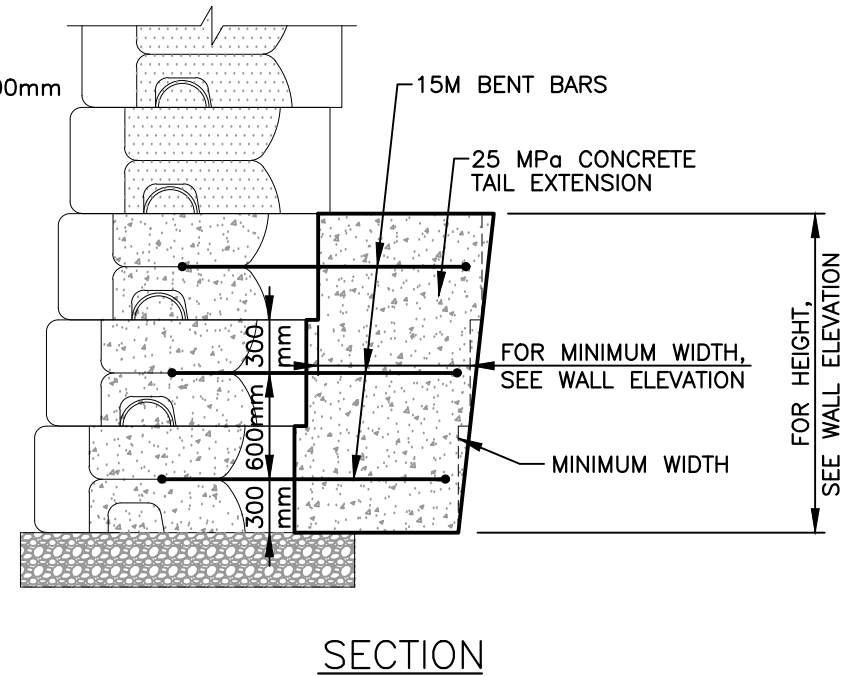
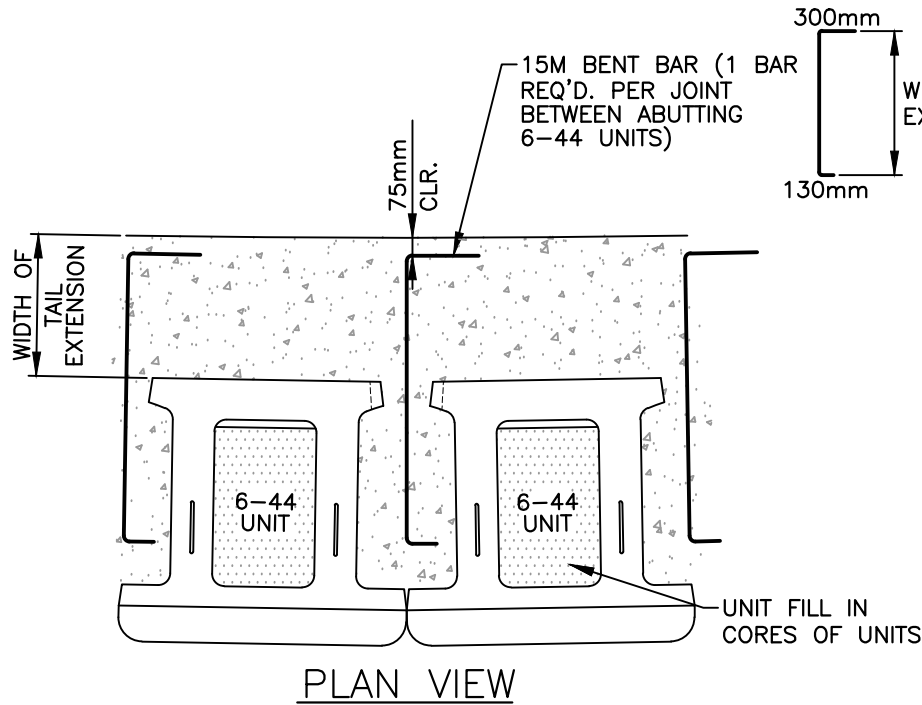
REINFORCED CONNECTION FOR 24-44 UNITS
NOT TO SCALE

DISCLAIMER:
These typical details are preliminary and conceptual in nature. They are provided for general information purposes only. Anyone making use of these details and related information does so at their own risk and assumes all liability for such use. Site specific design should be performed by a licensed Professional Engineer based on actual site conditions, materials, and local practices.

Stone Strong LLC retains all common law, statutory, and other reserved rights to these drawings including the copyright. Limited license is granted to copy, reproduce, or modify the details to prepare construction drawings for Stone Strong retaining walls. Stone Strong LLC makes no warranties, either expressed or implied, of merchantability or fitness for any particular purpose, and accepts no responsibility for the accuracy, suitability, or completeness of information contained herein.

 www.stonestrong.com	PROJECT TYPICAL DETAILS STONE STRONG SYSTEMS	
	DATE: 4/18/23	FILE: 51_24-44 TailExtConnect

NOTE: USE REINFORCED CONNECTION ON CONVEX CURVES WHERE GAP BETWEEN TAILS IS REDUCED.



REINFORCED CONNECTION FOR 6-44 UNITS

NOT TO SCALE

DISCLAIMER:

These typical details are preliminary and conceptual in nature. They are provided for general information purposes only. Anyone making use of these details and related information does so at their own risk and assumes all liability for such use. Site specific design should be performed by a licensed Professional Engineer based on actual site conditions, materials, and local practices.

Stone Strong LLC retains all common law, statutory, and other reserved rights to these drawings including the copyright. Limited license is granted to copy, reproduce, or modify the details to prepare construction drawings for Stone Strong retaining walls. Stone Strong LLC makes no warranties, either expressed or implied, of merchantability or fitness for any particular purpose, and accepts no responsibility for the accuracy, suitability, or completeness of information contained herein.

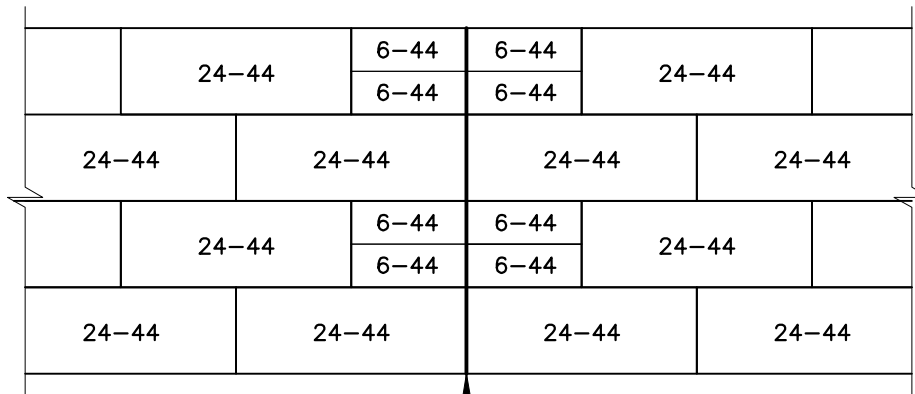


www.stonestrong.com

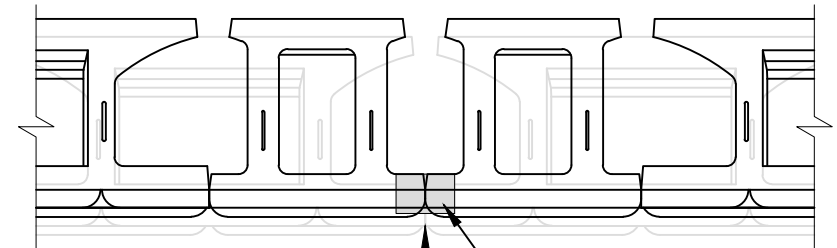
PROJECT

TYPICAL DETAILS
STONE STRONG SYSTEMS

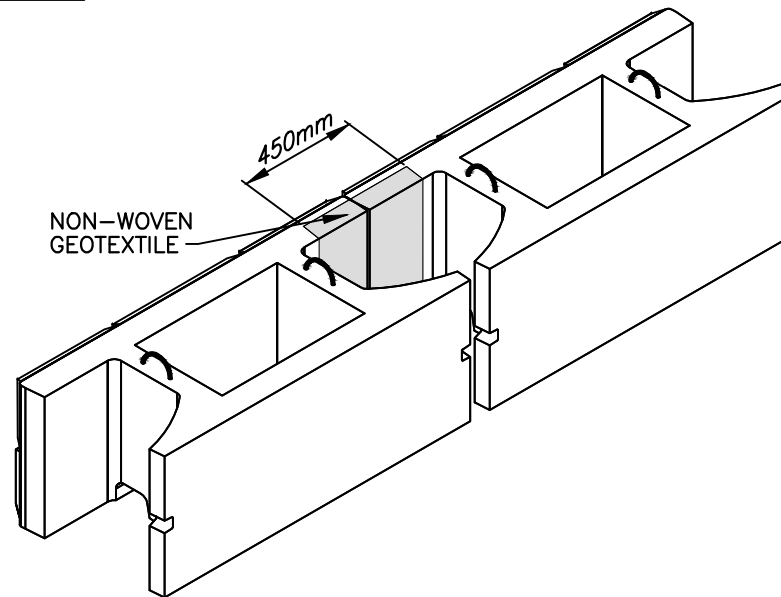
DATE: 4/18/23 FILE: 52_6-44 TailExtConnect



SLIP JOINT
WALL ELEVATION



SLIP JOINT
PLAN VIEW



SLIP JOINT DETAIL
NOT TO SCALE

DISCLAIMER:

These typical details are preliminary and conceptual in nature. They are provided for general information purposes only. Anyone making use of these details and related information does so at their own risk and assumes all liability for such use. Site specific design should be performed by a licensed Professional Engineer based on actual site conditions, materials, and local practices.

Stone Strong LLC retains all common law, statutory, and other reserved rights to these drawings including the copyright. Limited license is granted to copy, reproduce, or modify the details to prepare construction drawings for Stone Strong retaining walls. Stone Strong LLC makes no warranties, either expressed or implied, of merchantability or fitness for any particular purpose, and accepts no responsibility for the accuracy, suitability, or completeness of information contained herein.



www.stonestrong.com

PROJECT

TYPICAL DETAILS
STONE STRONG SYSTEMS

DATE: 4/18/23 FILE: 53_Slip Joint