

## DUAL FACE LIGHT POLE

NOT TO SCALE

CHECK ON AVAILABILITY OF ALL UNITS w/LOCAL PRODUCER/  
DEALER. SOME UNITS MAY HAVE LIMITED AVAILABILITY.

### DISCLAIMER:

These typical details are preliminary and conceptual in nature. They are provided for general information purposes only. Anyone making use of these details and related information does so at their own risk and assumes all liability for such use. Site specific design should be performed by a licensed Professional Engineer based on actual site conditions, materials, and local practices.

Stone Strong LLC retains all common law, statutory, and other reserved rights to these drawings including the copyright. Limited license is granted to copy, reproduce, or modify the details to prepare construction drawings for Stone Strong retaining walls. Stone Strong LLC makes no warranties, either expressed or implied, of merchantability or fitness for any particular purpose, and accepts no responsibility for the accuracy, suitability, or completeness of information contained herein.

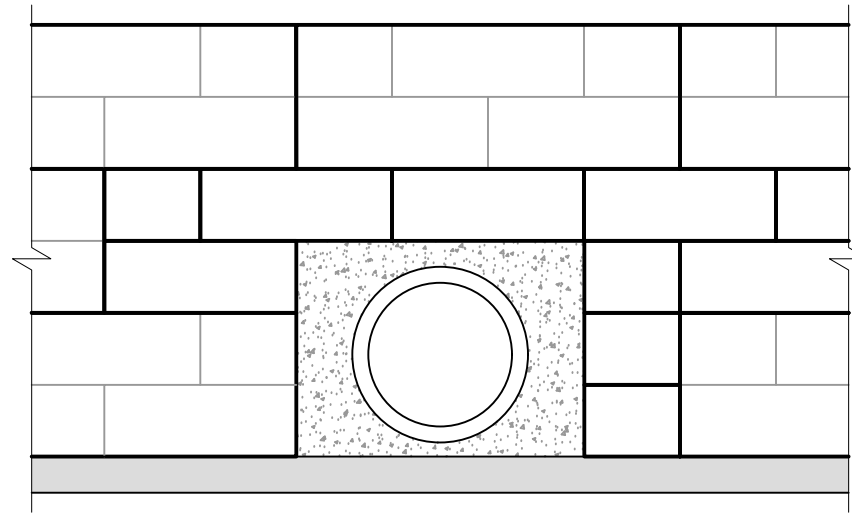


www.stonestrong.com

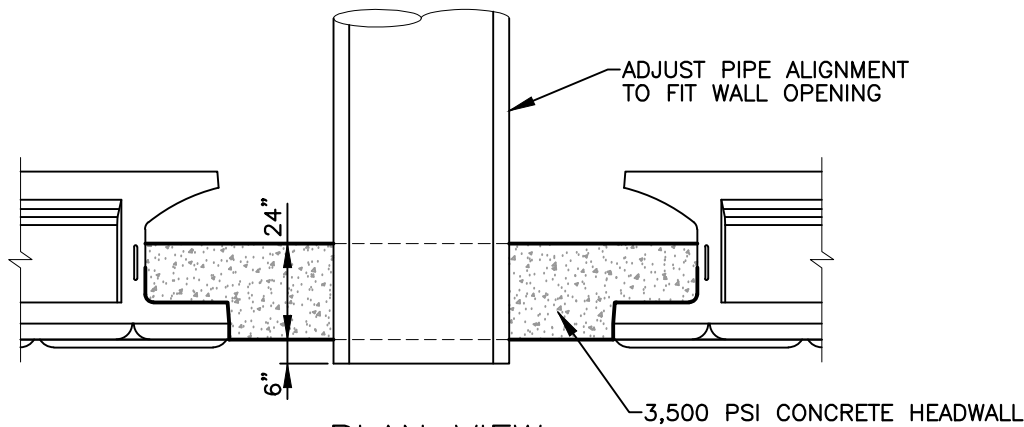
PROJECT

MISC. APPLICATIONS  
STONE STRONG SYSTEMS

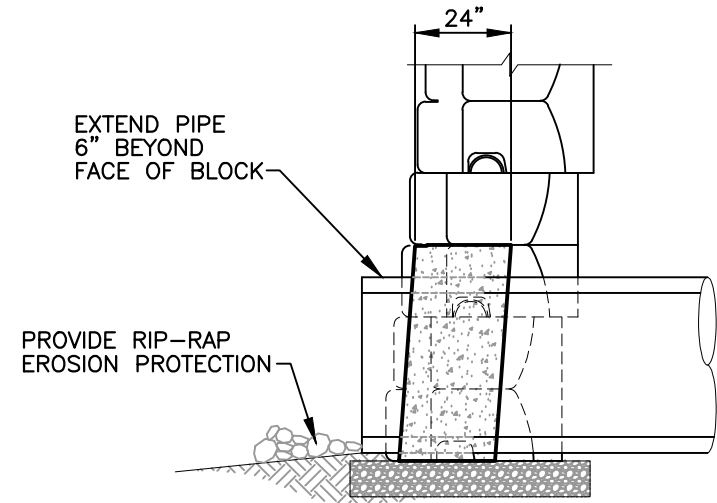
DATE: 4/18/23 FILE: 01\_DF.LightPole



ELEVATION



PLAN VIEW



CROSS SECTION

## CONCRETE HEADWALL DETAIL

NOT TO SCALE

### DISCLAIMER:

These typical details are preliminary and conceptual in nature. They are provided for general information purposes only. Anyone making use of these details and related information does so at their own risk and assumes all liability for such use. Site specific design should be performed by a licensed Professional Engineer based on actual site conditions, materials, and local practices.

Stone Strong LLC retains all common law, statutory, and other reserved rights to these drawings including the copyright. Limited license is granted to copy, reproduce, or modify the details to prepare construction drawings for Stone Strong retaining walls. Stone Strong LLC makes no warranties, either expressed or implied, of merchantability or fitness for any particular purpose, and accepts no responsibility for the accuracy, suitability, or completeness of information contained herein.

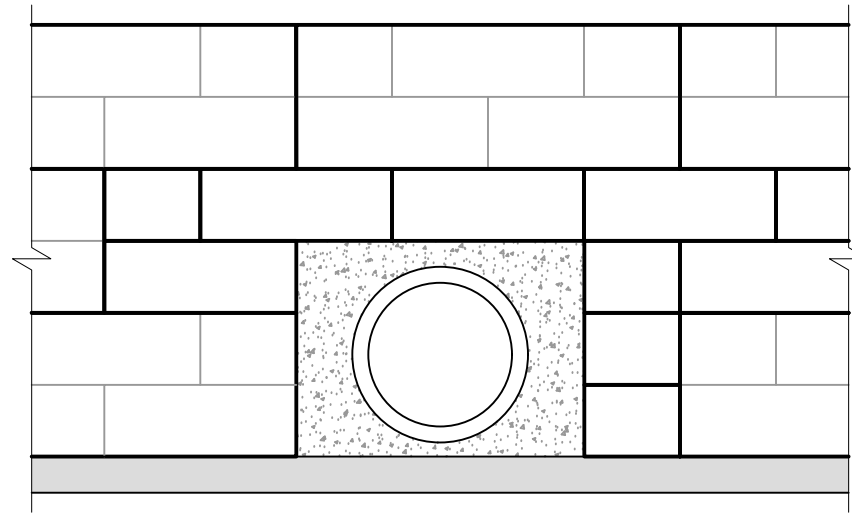


[www.stonestrong.com](http://www.stonestrong.com)

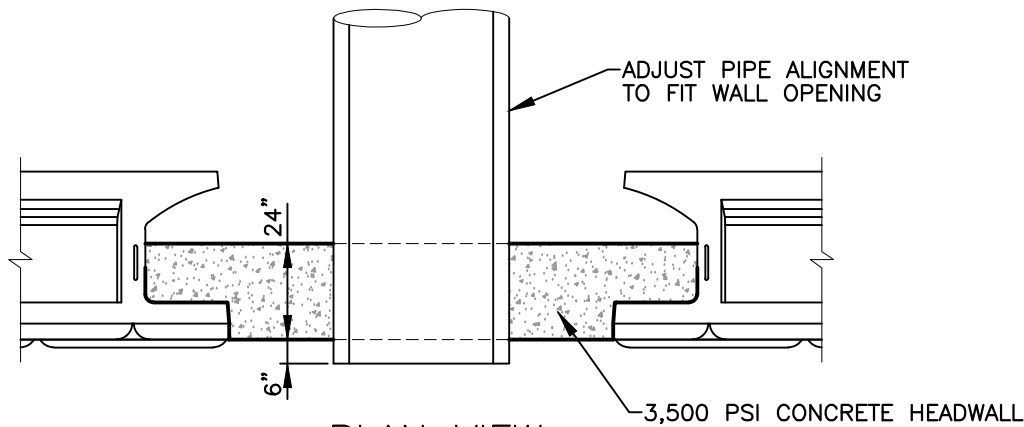
PROJECT

MISC. APPLICATIONS  
STONE STRONG SYSTEMS

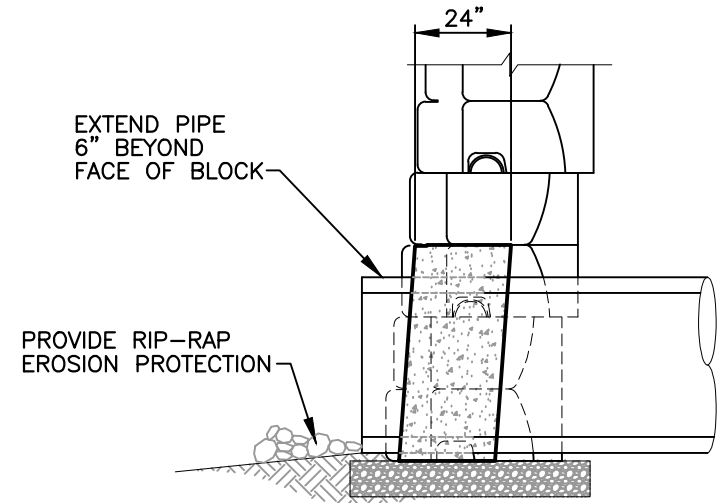
DATE: 4/18/23 FILE: 02\_PipeOutlet.Headwall



ELEVATION



PLAN VIEW



CROSS SECTION

## CONCRETE HEADWALL DETAIL

NOT TO SCALE

### DISCLAIMER:

These typical details are preliminary and conceptual in nature. They are provided for general information purposes only. Anyone making use of these details and related information does so at their own risk and assumes all liability for such use. Site specific design should be performed by a licensed Professional Engineer based on actual site conditions, materials, and local practices.

Stone Strong LLC retains all common law, statutory, and other reserved rights to these drawings including the copyright. Limited license is granted to copy, reproduce, or modify the details to prepare construction drawings for Stone Strong retaining walls. Stone Strong LLC makes no warranties, either expressed or implied, of merchantability or fitness for any particular purpose, and accepts no responsibility for the accuracy, suitability, or completeness of information contained herein.

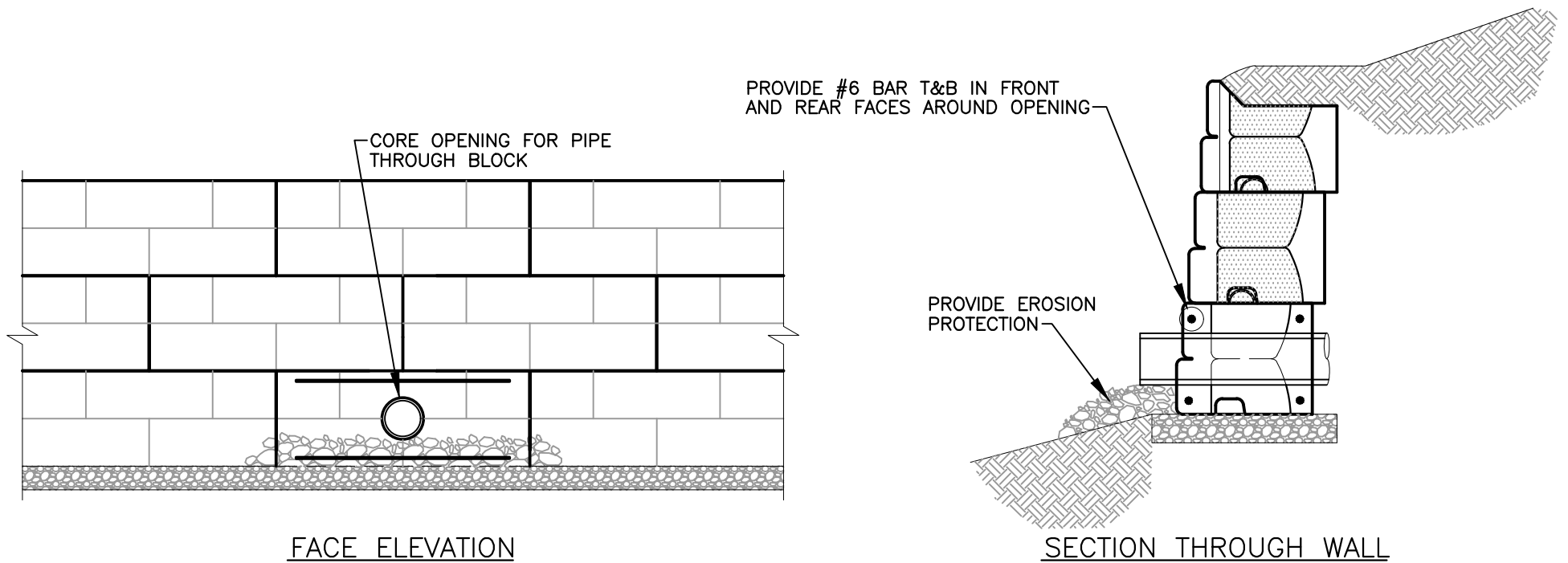


[www.stonestrong.com](http://www.stonestrong.com)

PROJECT

MISC. APPLICATIONS  
STONE STRONG SYSTEMS

DATE: 4/18/23 FILE: 02\_PipeOutlet.Headwall



## CORED PIPE OUTLET

NOT TO SCALE

### DISCLAIMER:

These typical details are preliminary and conceptual in nature. They are provided for general information purposes only. Anyone making use of these details and related information does so at their own risk and assumes all liability for such use. Site specific design should be performed by a licensed Professional Engineer based on actual site conditions, materials, and local practices.

Stone Strong LLC retains all common law, statutory, and other reserved rights to these drawings including the copyright. Limited license is granted to copy, reproduce, or modify the details to prepare construction drawings for Stone Strong retaining walls. Stone Strong LLC makes no warranties, either expressed or implied, of merchantability or fitness for any particular purpose, and accepts no responsibility for the accuracy, suitability, or completeness of information contained herein.

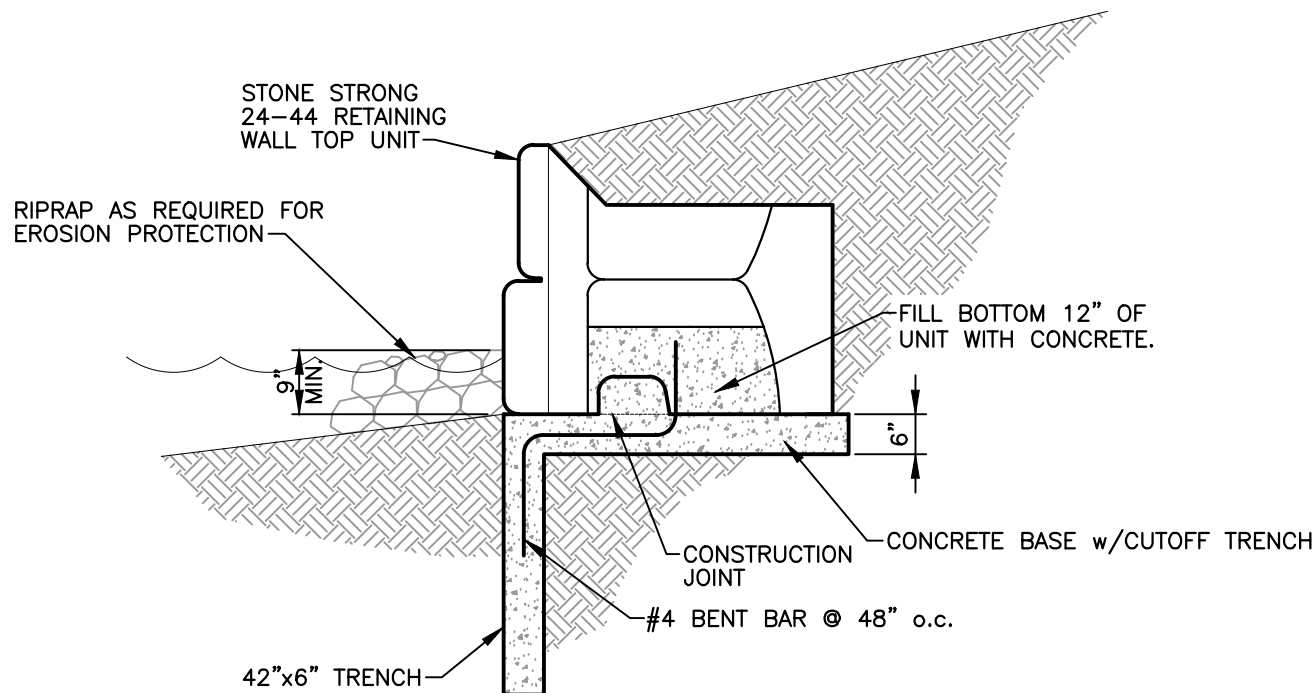


[www.stonestrong.com](http://www.stonestrong.com)

### PROJECT

MISC. APPLICATIONS  
STONE STRONG SYSTEMS

DATE: 4/18/23 FILE: 03\_PipeOutlet.Core



**NOTE:**

WAVE AND ICE CONSIDERATIONS SHOULD BE EVALUATED TO DETERMINE THE MINIMUM BORDER HEIGHT AND RIPRAP REQUIREMENTS. EROSION OF THE BASE AND WAVE OVERTOPPING CAN DESTABILIZE THE BORDER. ICE LOADS MAY ALSO CONTROL THE DESIGN.

## POND BORDER WALL CONCRETE BASE NOT TO SCALE

**DISCLAIMER:**

These typical details are preliminary and conceptual in nature. They are provided for general information purposes only. Anyone making use of these details and related information does so at their own risk and assumes all liability for such use. Site specific design should be performed by a licensed Professional Engineer based on actual site conditions, materials, and local practices.

Stone Strong LLC retains all common law, statutory, and other reserved rights to these drawings including the copyright. Limited license is granted to copy, reproduce, or modify the details to prepare construction drawings for Stone Strong retaining walls. Stone Strong LLC makes no warranties, either expressed or implied, of merchantability or fitness for any particular purpose, and accepts no responsibility for the accuracy, suitability, or completeness of information contained herein.

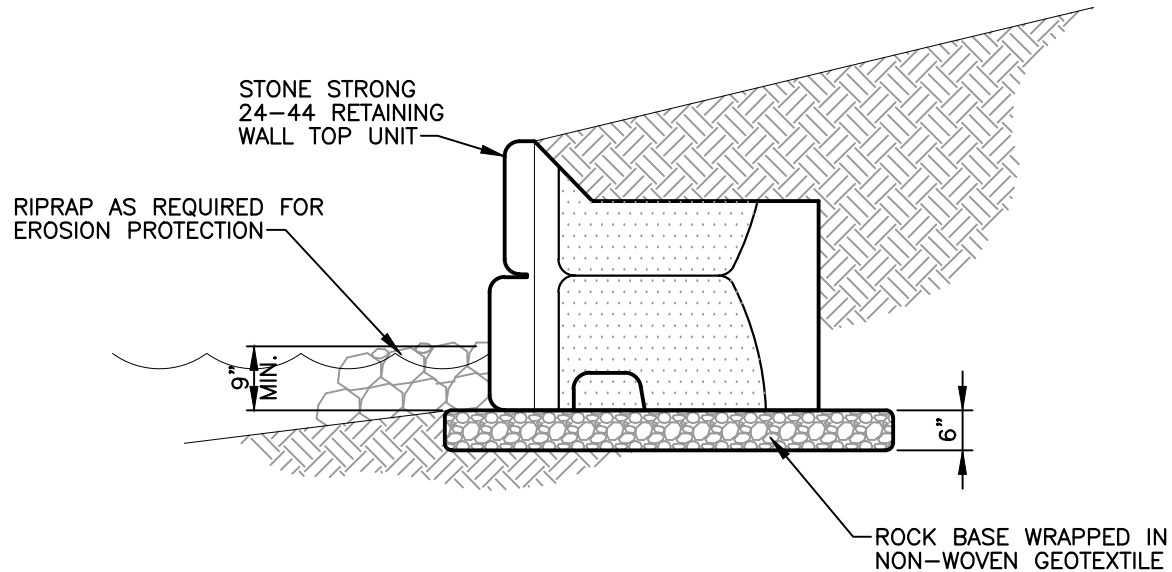


[www.stonestrong.com](http://www.stonestrong.com)

**PROJECT**

MISC. APPLICATIONS  
STONE STRONG SYSTEMS

DATE: 4/18/23 FILE: 04\_PondBorder.Concrete



**NOTE:**

WAVE AND ICE CONSIDERATIONS SHOULD BE EVALUATED TO DETERMINE THE MINIMUM BORDER HEIGHT AND RIPRAP REQUIREMENTS. EROSION OF THE BASE AND WAVE OVERTOPPING CAN DESTABILIZE THE BORDER. ICE LOADS MAY ALSO CONTROL THE DESIGN.

**POND BORDER WALL**  
**ROCK BASE**  
NOT TO SCALE

**DISCLAIMER:**

These typical details are preliminary and conceptual in nature. They are provided for general information purposes only. Anyone making use of these details and related information does so at their own risk and assumes all liability for such use. Site specific design should be performed by a licensed Professional Engineer based on actual site conditions, materials, and local practices.

Stone Strong LLC retains all common law, statutory, and other reserved rights to these drawings including the copyright. Limited license is granted to copy, reproduce, or modify the details to prepare construction drawings for Stone Strong retaining walls. Stone Strong LLC makes no warranties, either expressed or implied, of merchantability or fitness for any particular purpose, and accepts no responsibility for the accuracy, suitability, or completeness of information contained herein.

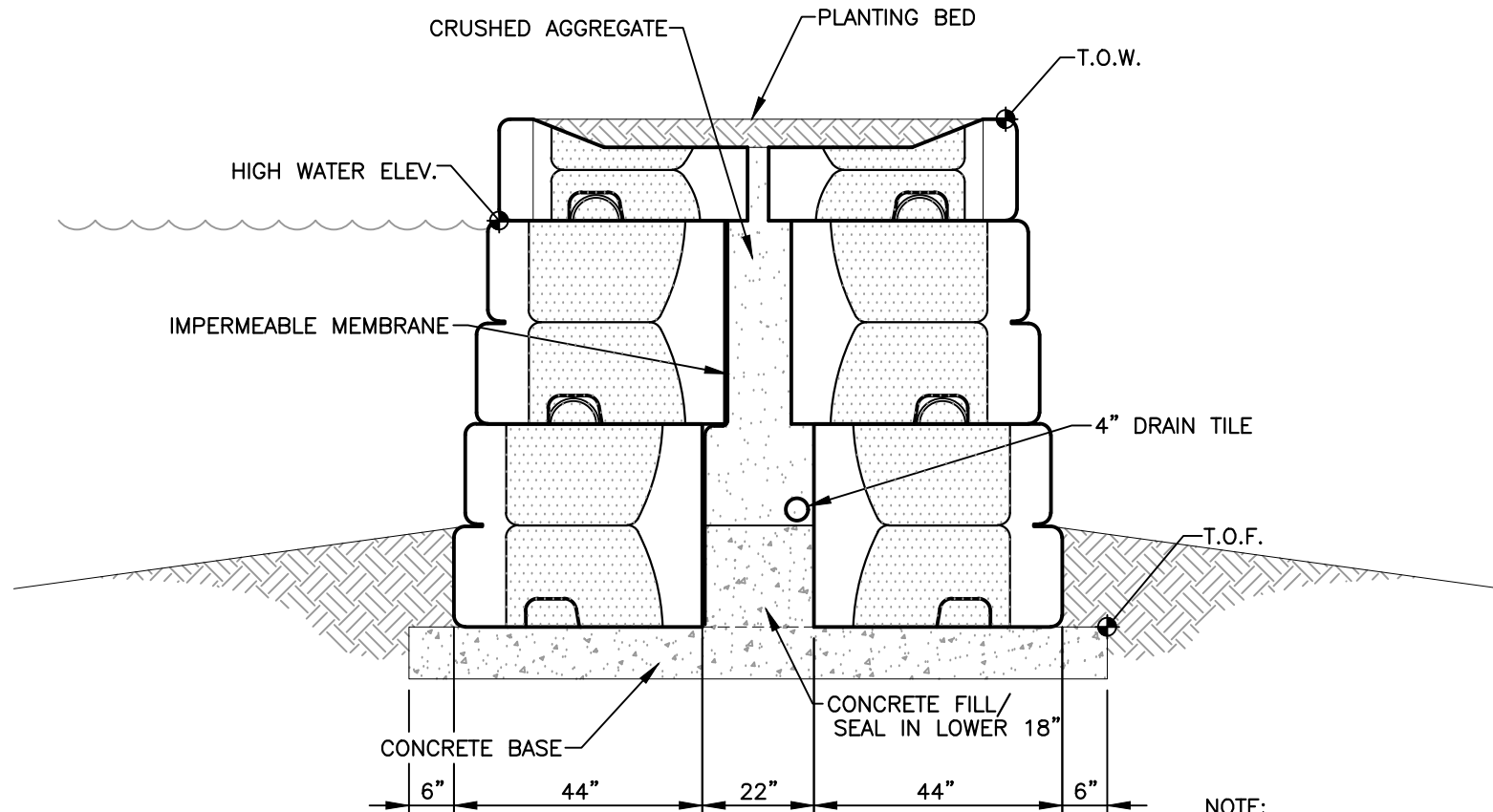


[www.stonestrong.com](http://www.stonestrong.com)

**PROJECT**

MISC. APPLICATIONS  
STONE STRONG SYSTEMS

DATE: 4/18/23 FILE: 05\_PondBorder.Rock



**NOTE:**  
NON-STANDARD APPLICATION.  
REQUIRES ADAPTATION TO  
SPECIFIC PROJECT.

## DETENTION WALL CROSS SECTION

NOT TO SCALE

### DISCLAIMER:

These typical details are preliminary and conceptual in nature. They are provided for general information purposes only. Anyone making use of these details and related information does so at their own risk and assumes all liability for such use. Site specific design should be performed by a licensed Professional Engineer based on actual site conditions, materials, and local practices.

Stone Strong LLC retains all common law, statutory, and other reserved rights to these drawings including the copyright. Limited license is granted to copy, reproduce, or modify the details to prepare construction drawings for Stone Strong retaining walls. Stone Strong LLC makes no warranties, either expressed or implied, of merchantability or fitness for any particular purpose, and accepts no responsibility for the accuracy, suitability, or completeness of information contained herein.

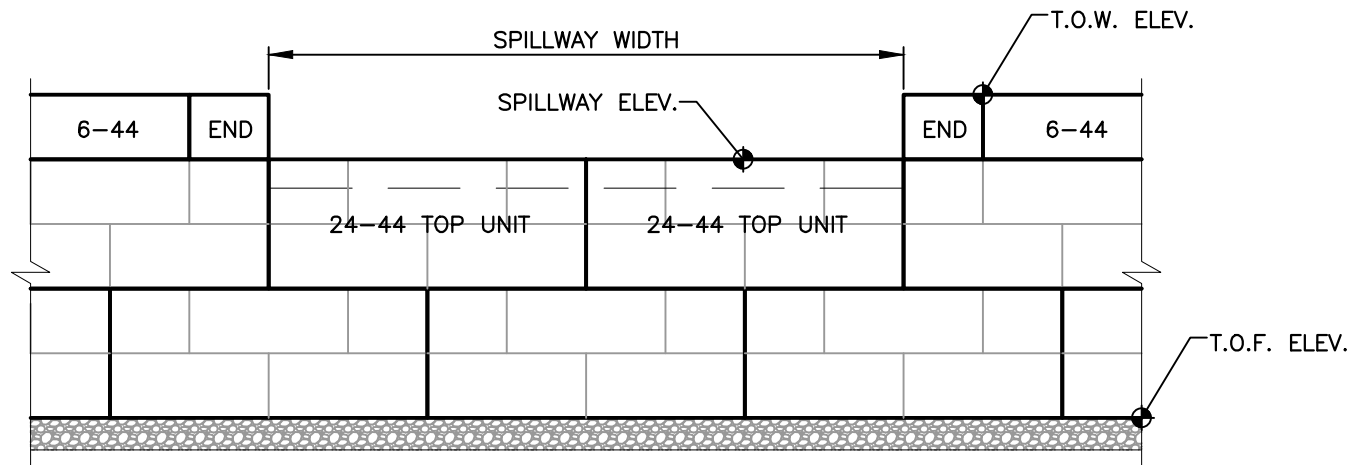


[www.stonestrong.com](http://www.stonestrong.com)

PROJECT

MISC. APPLICATIONS  
STONE STRONG SYSTEMS

DATE: 4/18/23 FILE: 06\_Detention.XSec



**NOTE:**  
NON-STANDARD APPLICATION.  
REQUIRES ADAPTATION TO  
SPECIFIC PROJECT.

## SPILLWAY ELEVATION

NOT TO SCALE

### DISCLAIMER:

These typical details are preliminary and conceptual in nature. They are provided for general information purposes only. Anyone making use of these details and related information does so at their own risk and assumes all liability for such use. Site specific design should be performed by a licensed Professional Engineer based on actual site conditions, materials, and local practices.

Stone Strong LLC retains all common law, statutory, and other reserved rights to these drawings including the copyright. Limited license is granted to copy, reproduce, or modify the details to prepare construction drawings for Stone Strong retaining walls. Stone Strong LLC makes no warranties, either expressed or implied, of merchantability or fitness for any particular purpose, and accepts no responsibility for the accuracy, suitability, or completeness of information contained herein.



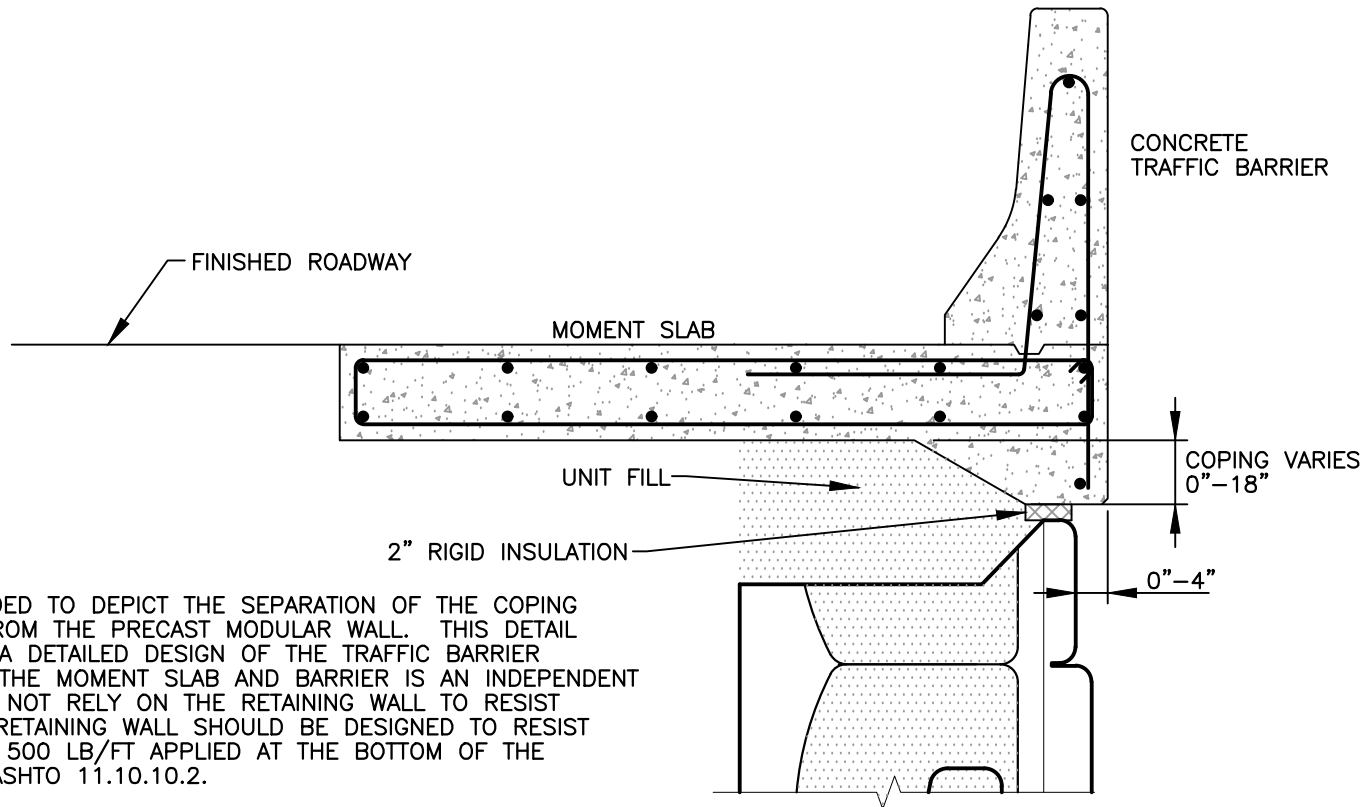
[www.stonestrong.com](http://www.stonestrong.com)

### PROJECT

MISC. APPLICATIONS  
STONE STRONG SYSTEMS

DATE: 4/18/23 FILE: 07\_Spillway.Elev





THIS DETAIL IS INTENDED TO DEPICT THE SEPARATION OF THE COPING AND MOMENT SLAB FROM THE PRECAST MODULAR WALL. THIS DETAIL IS NOT INTENDED AS A DETAILED DESIGN OF THE TRAFFIC BARRIER AND MOMENT SLAB. THE MOMENT SLAB AND BARRIER IS AN INDEPENDENT DESIGN, AND SHOULD NOT RELY ON THE RETAINING WALL TO RESIST CRASH LOADS. THE RETAINING WALL SHOULD BE DESIGNED TO RESIST A LATERAL FORCE OF 500 LB/FT APPLIED AT THE BOTTOM OF THE MOMENT SLAB PER AASHTO 11.10.10.2.

## BARRIER & COPING

NOT TO SCALE

### DISCLAIMER:

These typical details are preliminary and conceptual in nature. They are provided for general information purposes only. Anyone making use of these details and related information does so at their own risk and assumes all liability for such use. Site specific design should be performed by a licensed Professional Engineer based on actual site conditions, materials, and local practices.

Stone Strong LLC retains all common law, statutory, and other reserved rights to these drawings including the copyright. Limited license is granted to copy, reproduce, or modify the details to prepare construction drawings for Stone Strong retaining walls. Stone Strong LLC makes no warranties, either expressed or implied, of merchantability or fitness for any particular purpose, and accepts no responsibility for the accuracy, suitability, or completeness of information contained herein.

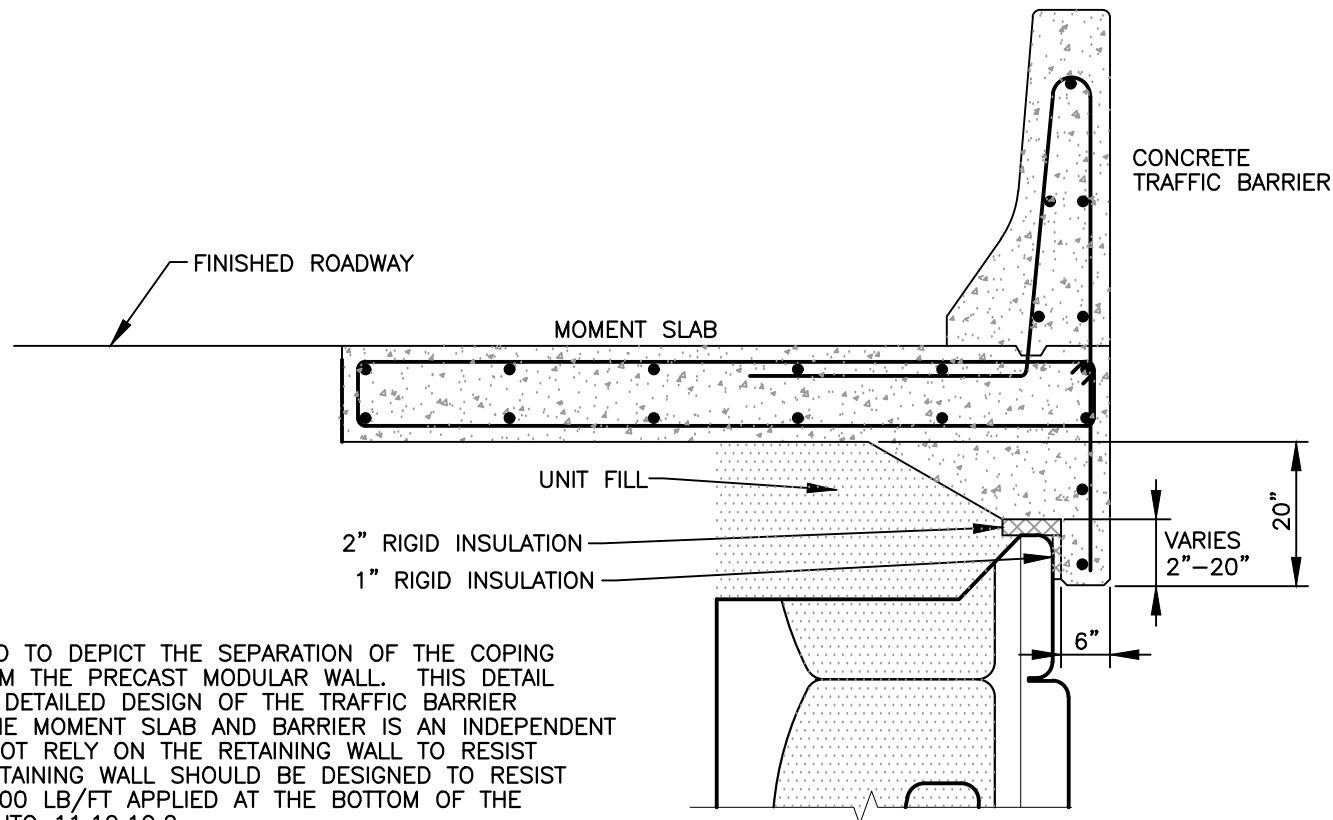


[www.stonestrong.com](http://www.stonestrong.com)

### PROJECT

MISC. APPLICATIONS  
STONE STRONG SYSTEMS

DATE: 4/18/23 FILE: 08\_Barrier Coping



THIS DETAIL IS INTENDED TO DEPICT THE SEPARATION OF THE COPING AND MOMENT SLAB FROM THE PRECAST MODULAR WALL. THIS DETAIL IS NOT INTENDED AS A DETAILED DESIGN OF THE TRAFFIC BARRIER AND MOMENT SLAB. THE MOMENT SLAB AND BARRIER IS AN INDEPENDENT DESIGN, AND SHOULD NOT RELY ON THE RETAINING WALL TO RESIST CRASH LOADS. THE RETAINING WALL SHOULD BE DESIGNED TO RESIST A LATERAL FORCE OF 500 LB/FT APPLIED AT THE BOTTOM OF THE MOMENT SLAB PER AASHTO 11.10.10.2.

## BARRIER & COPING w/COPING SKIRT

NOT TO SCALE

### DISCLAIMER:

These typical details are preliminary and conceptual in nature. They are provided for general information purposes only. Anyone making use of these details and related information does so at their own risk and assumes all liability for such use. Site specific design should be performed by a licensed Professional Engineer based on actual site conditions, materials, and local practices.

Stone Strong LLC retains all common law, statutory, and other reserved rights to these drawings including the copyright. Limited license is granted to copy, reproduce, or modify the details to prepare construction drawings for Stone Strong retaining walls. Stone Strong LLC makes no warranties, either expressed or implied, of merchantability or fitness for any particular purpose, and accepts no responsibility for the accuracy, suitability, or completeness of information contained herein.

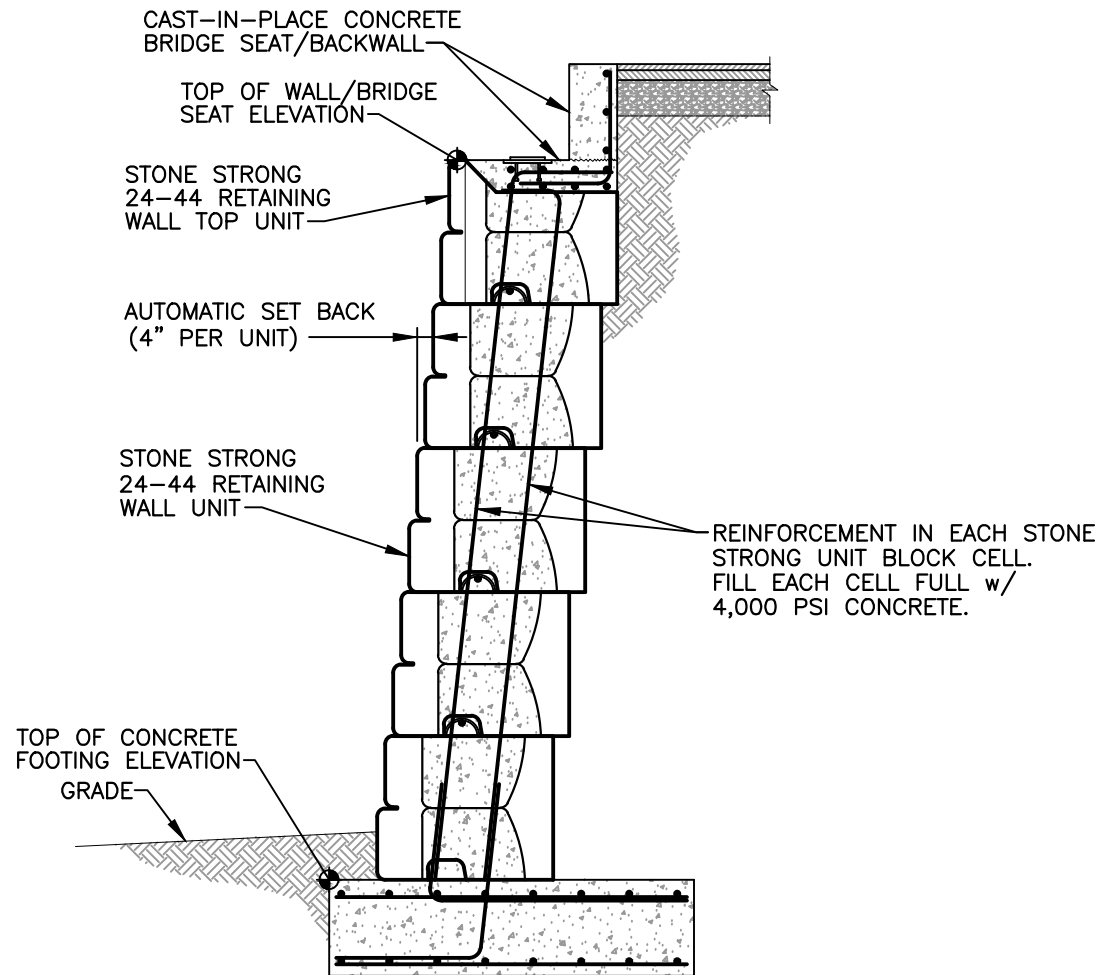


[www.stonestrong.com](http://www.stonestrong.com)

### PROJECT

MISC. APPLICATIONS  
STONE STRONG SYSTEMS

DATE: 4/18/23 FILE: 09\_Barrier Coping with skirt



## BRIDGE ABUTMENT SECTION

NOT TO SCALE

### DISCLAIMER:

These typical details are preliminary and conceptual in nature. They are provided for general information purposes only. Anyone making use of these details and related information does so at their own risk and assumes all liability for such use. Site specific design should be performed by a licensed Professional Engineer based on actual site conditions, materials, and local practices.

Stone Strong LLC retains all common law, statutory, and other reserved rights to these drawings including the copyright. Limited license is granted to copy, reproduce, or modify the details to prepare construction drawings for Stone Strong retaining walls. Stone Strong LLC makes no warranties, either expressed or implied, of merchantability or fitness for any particular purpose, and accepts no responsibility for the accuracy, suitability, or completeness of information contained herein.

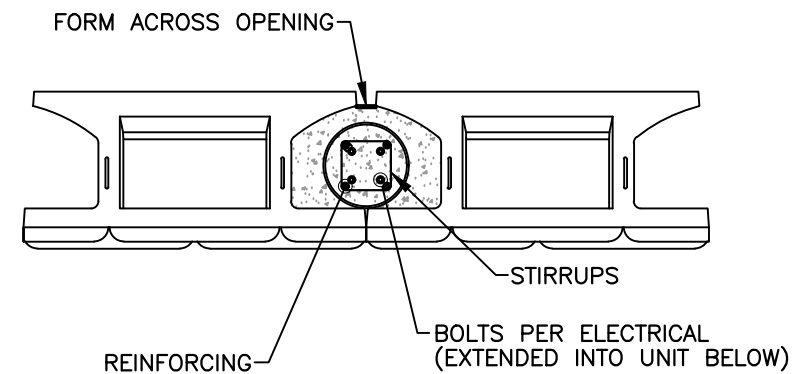
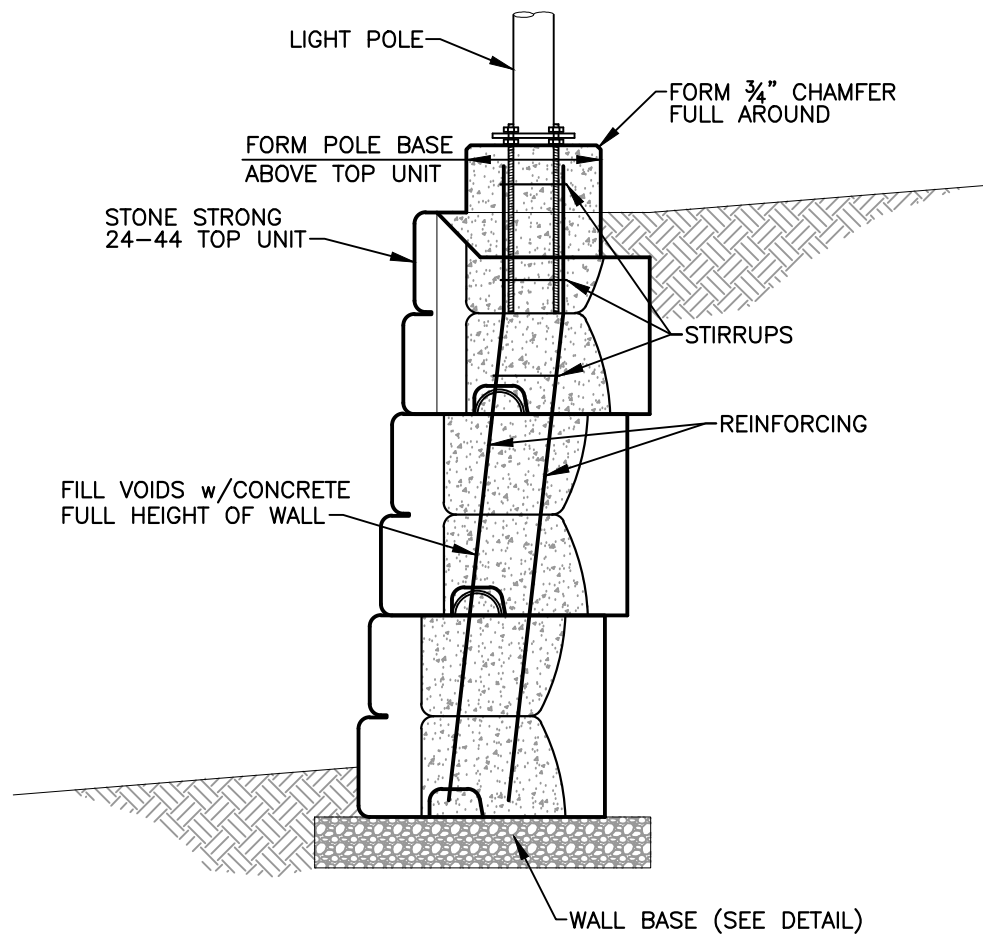


[www.stonestrong.com](http://www.stonestrong.com)

PROJECT

MISC. APPLICATIONS  
STONE STRONG SYSTEMS

DATE: 4/18/23 FILE: 10\_Bridge Abutment



## 24-44 UNIT LIGHT POLE

NOT TO SCALE

### DISCLAIMER:

These typical details are preliminary and conceptual in nature. They are provided for general information purposes only. Anyone making use of these details and related information does so at their own risk and assumes all liability for such use. Site specific design should be performed by a licensed Professional Engineer based on actual site conditions, materials, and local practices.

Stone Strong LLC retains all common law, statutory, and other reserved rights to these drawings including the copyright. Limited license is granted to copy, reproduce, or modify the details to prepare construction drawings for Stone Strong retaining walls. Stone Strong LLC makes no warranties, either expressed or implied, of merchantability or fitness for any particular purpose, and accepts no responsibility for the accuracy, suitability, or completeness of information contained herein.



[www.stonestrong.com](http://www.stonestrong.com)

### PROJECT

MISC. APPLICATIONS  
STONE STRONG SYSTEMS

DATE: 4/18/23 FILE: 11\_24-44.LightPole