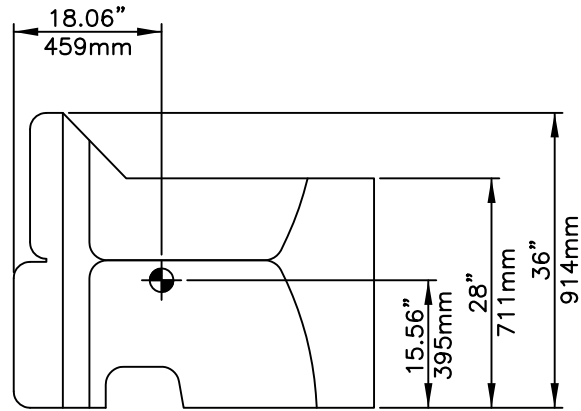
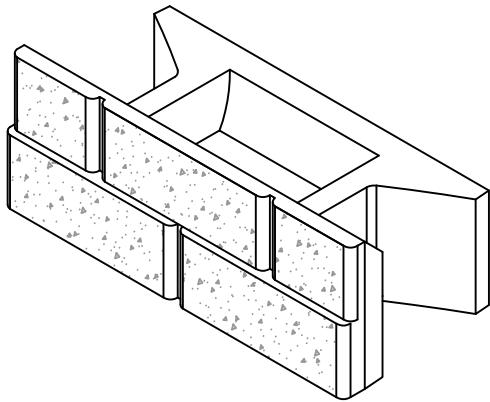
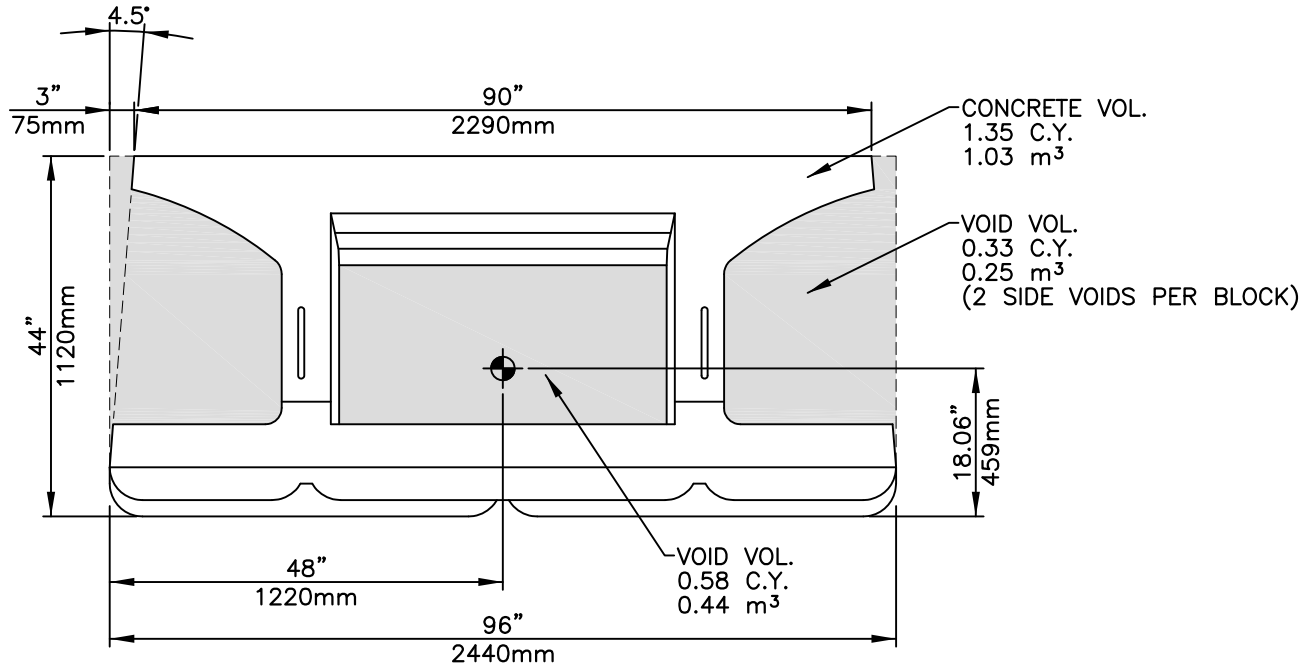
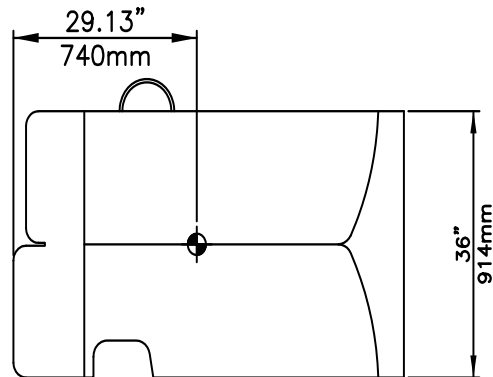
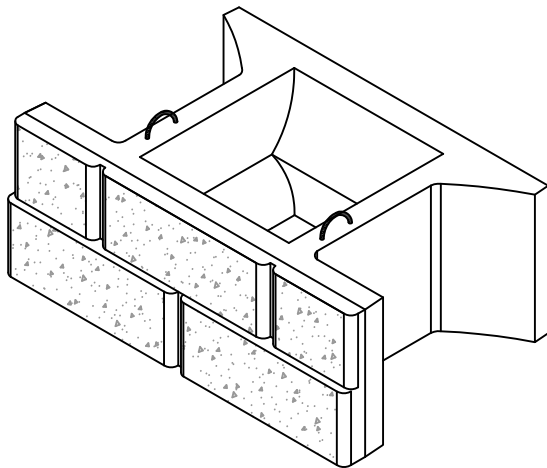
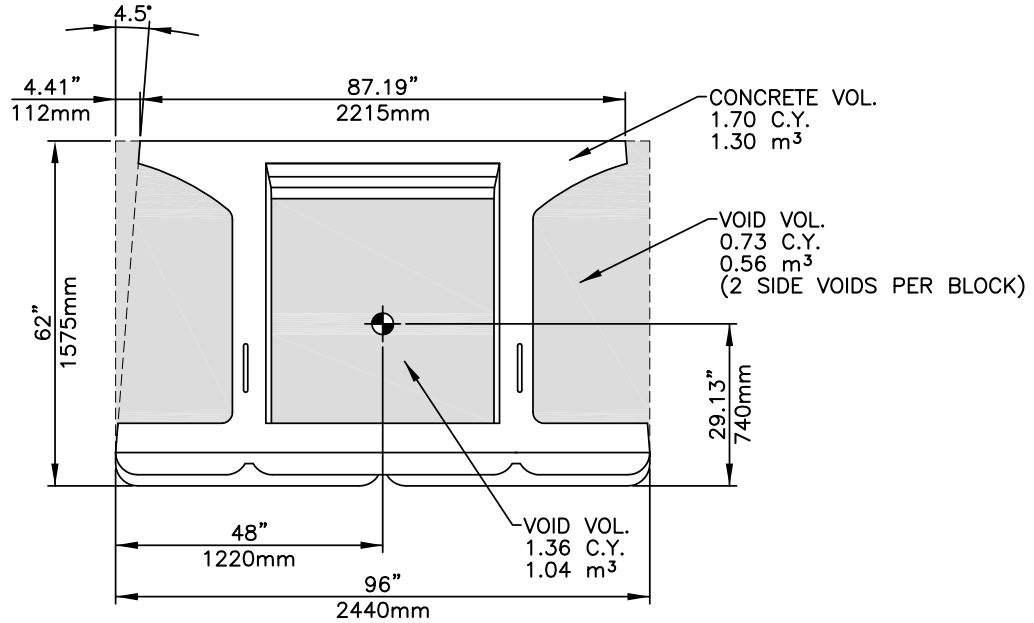


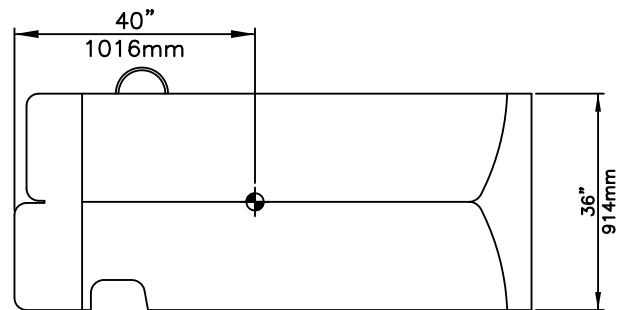
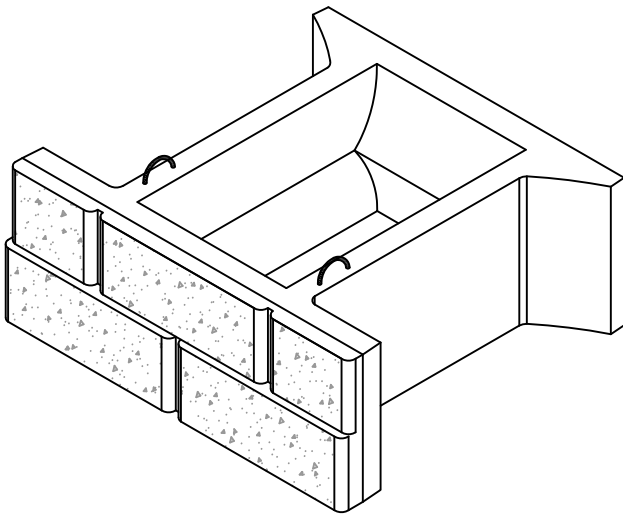
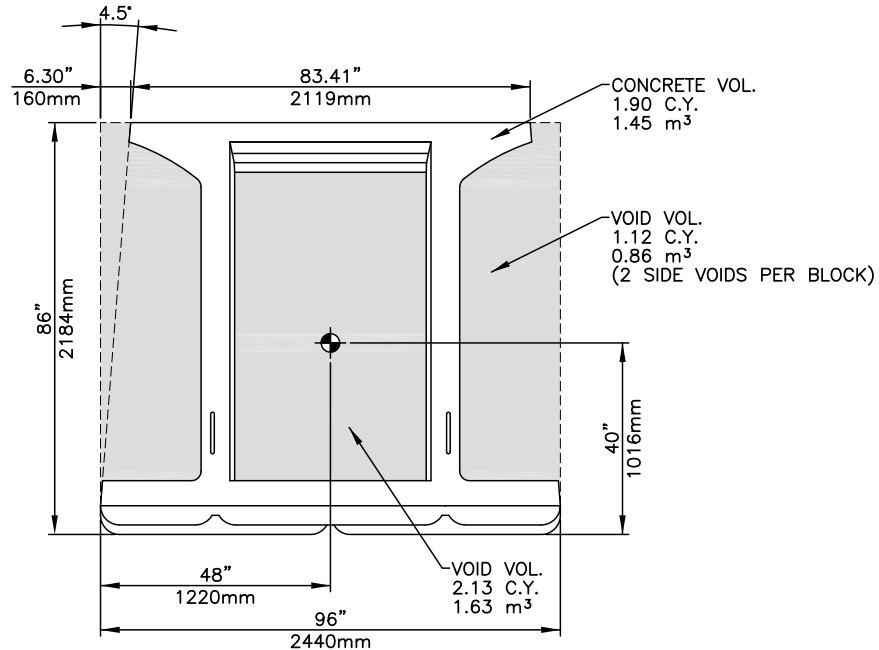
Block Wt.	6,000 lbs	2,720 kg
Form Wt.	4,600 lbs	2,090 kg
Concrete Volume	1.50 CY	1.15 m ³
Aggregate Infill	1.60 CY	1.22 m ³
(per face area)	0.1 tons/sf	1,000 kg/m ²



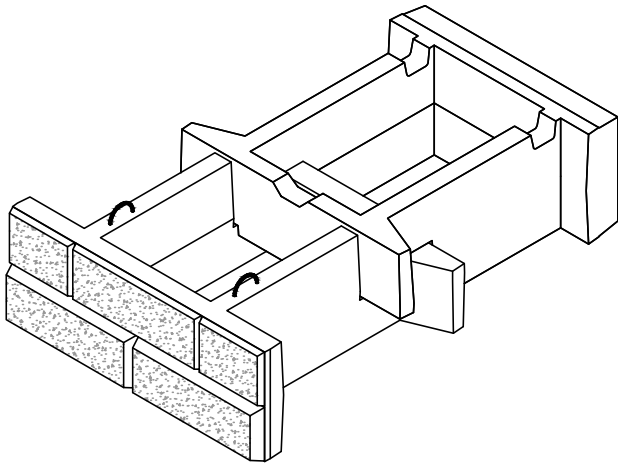
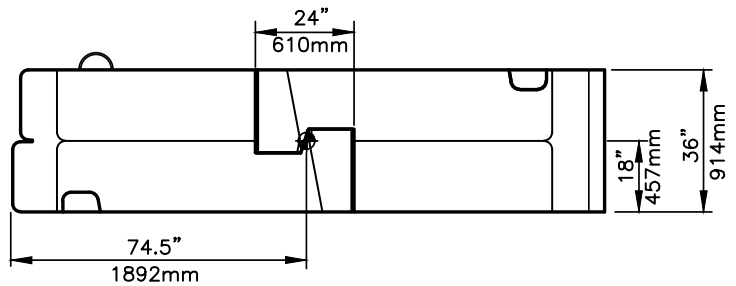
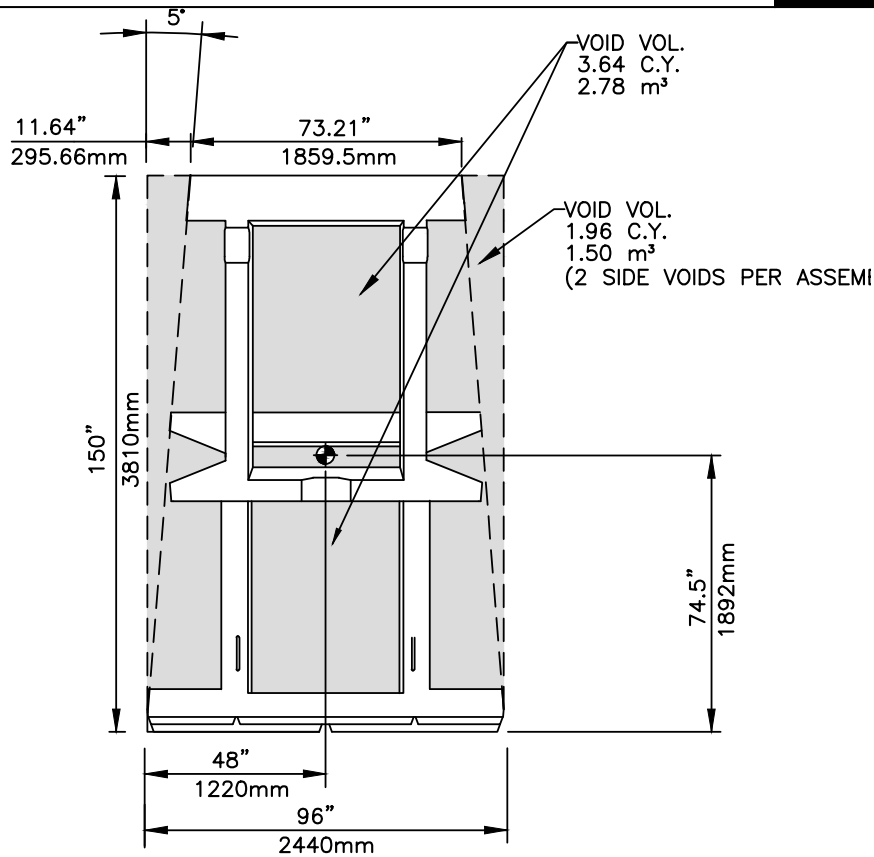
Block Wt.	5,400 lbs	2,445 kg
Form Wt.	4,930 lbs	2,235 kg
Concrete Volume	1.35 CY	1.03 m ³
Aggregate Infill	1.24 CY	0.94 m ³
(per face area)	0.1 tons/sf	1,000 kg/m ²



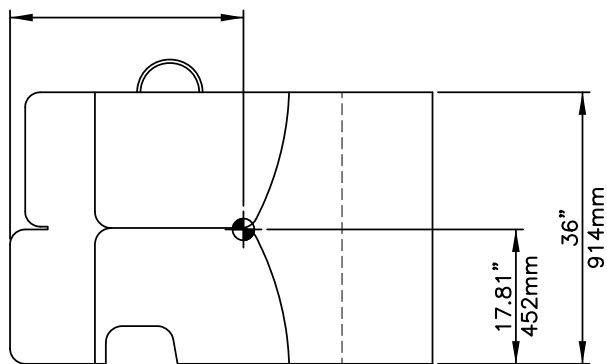
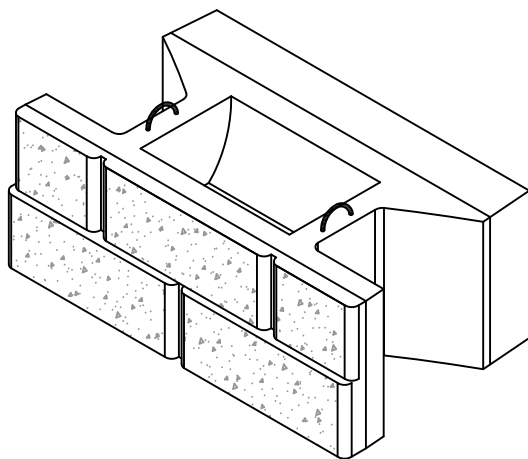
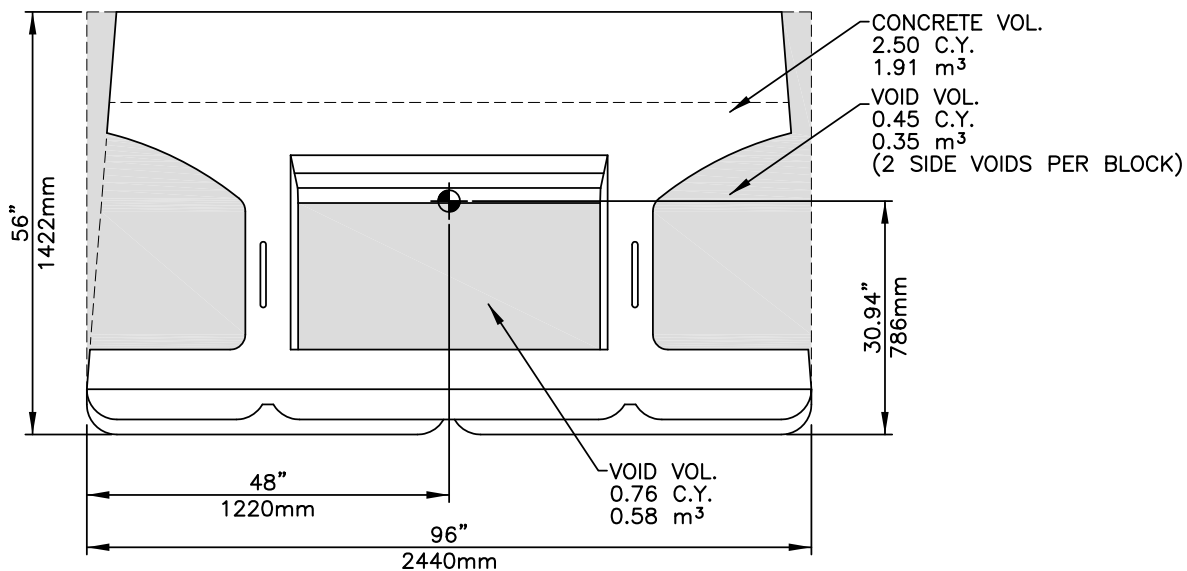
Block Wt.	6,800 lbs	3,080 kg
Form Wt.	6,580 lbs	2,990 kg
Concrete Volume	1.70 CY	1.30 m ³
Aggregate Infill	2.82 CY	2.16 m ³
(per face area)	0.2 tons/sf	2,000 kg/m ²



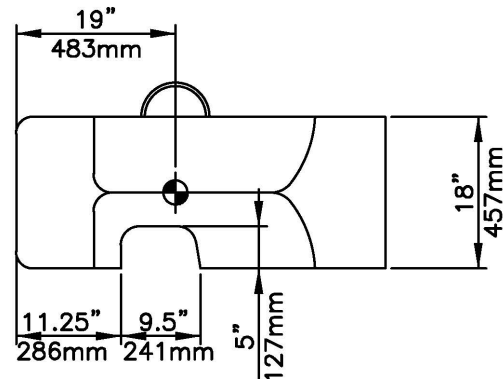
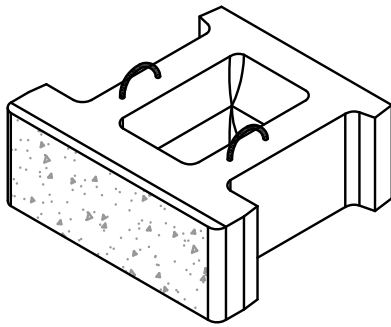
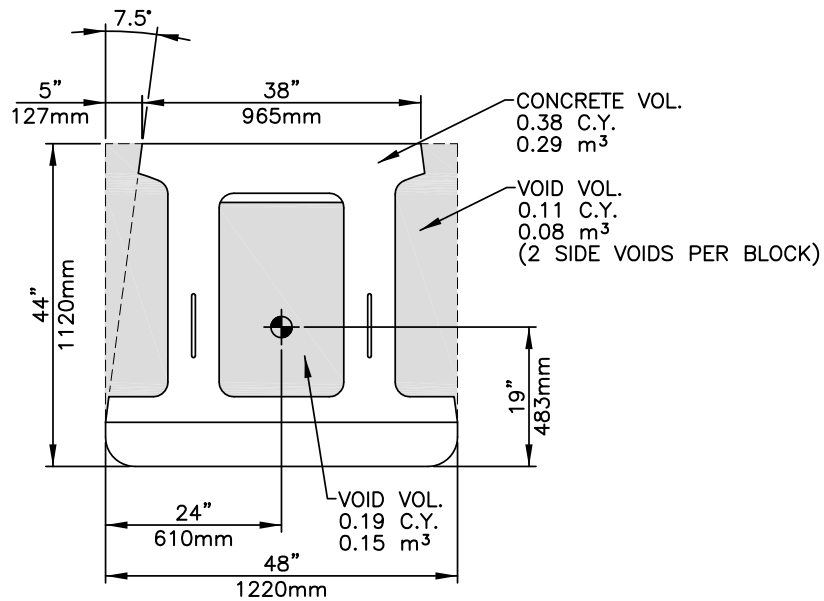
Block Wt.	7,600 lbs	3,445 kg
Form Wt.	7,695 lbs	3,490 kg
Concrete Volume	1.90 CY	1.45 m ³
Aggregate Infill	4.37 CY	3.35 m ³
(per face area)	0.3 tons/sf	3,000 kg/m ²



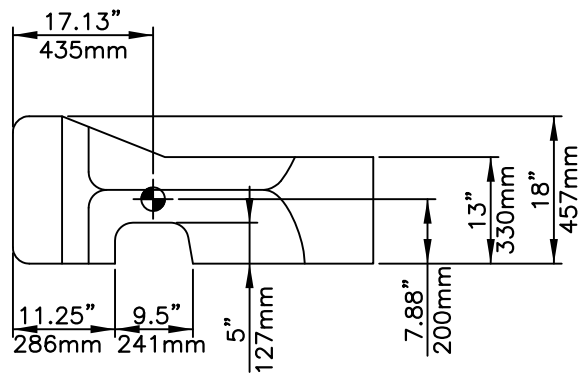
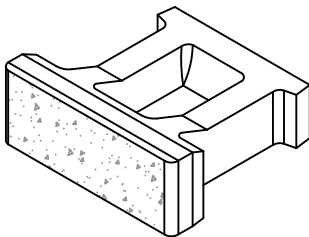
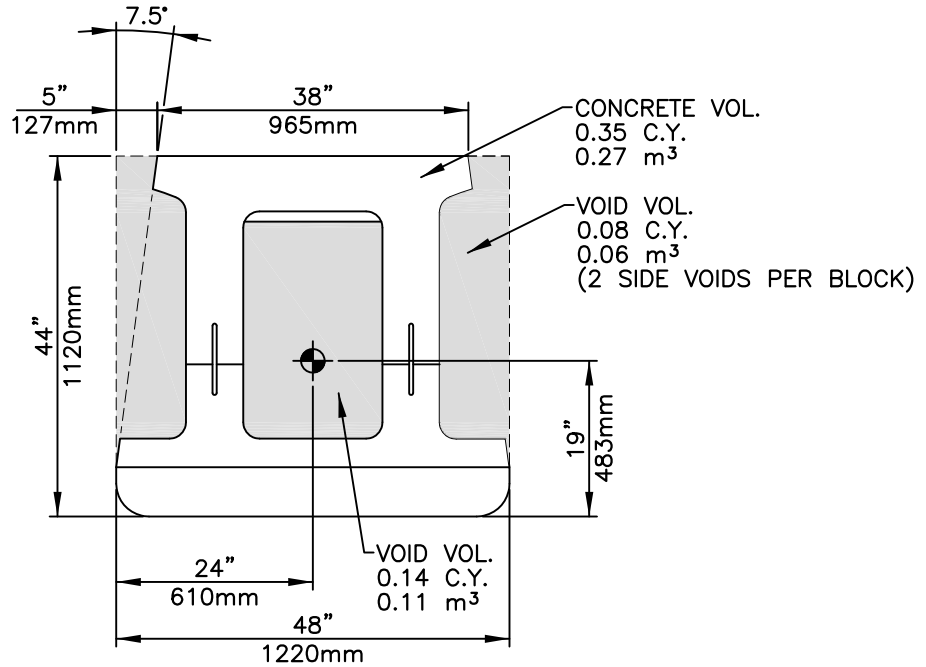
Block Wt.	12,750 lbs	5,780 kg
Form Wt.	7,950 lbs	3,600 kg
Concrete Volume	3.26 CY	2.50 m ³
Aggregate Infill	7.57 CY	5.78 m ³
(per face area)	0.5 tons/sf	5,000 kg/m ²



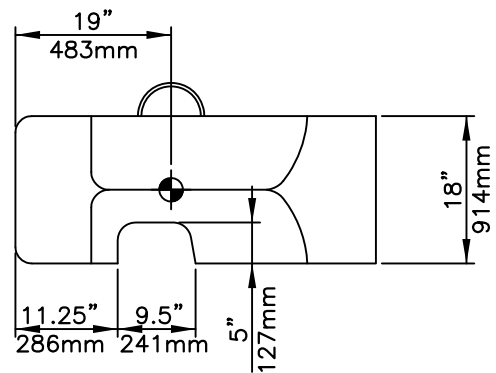
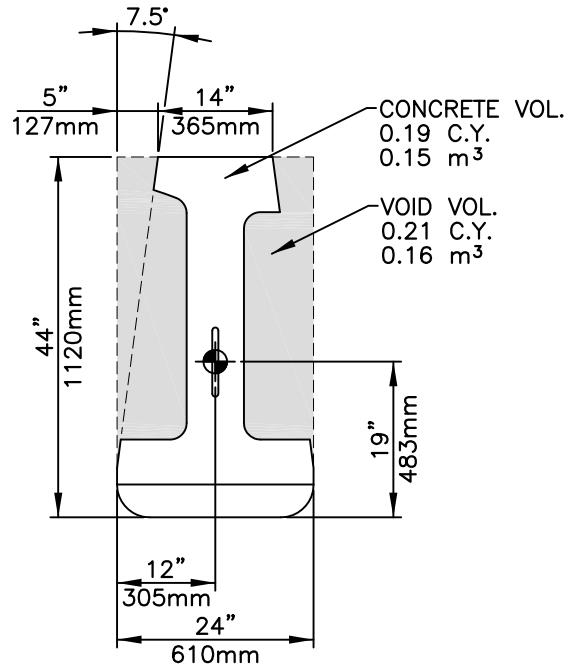
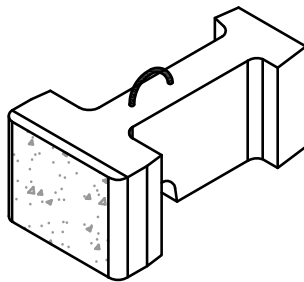
Block Wt.	10,000 lbs	4,585 kg
Form Wt.	5,120 lbs	2,320 kg
Concrete Volume	2.50 CY	1.91 m ³
Aggregate Infill	1.66 CY	1.28 m ³
(per face area)	0.1 tons/sf	1,000 kg/m ²



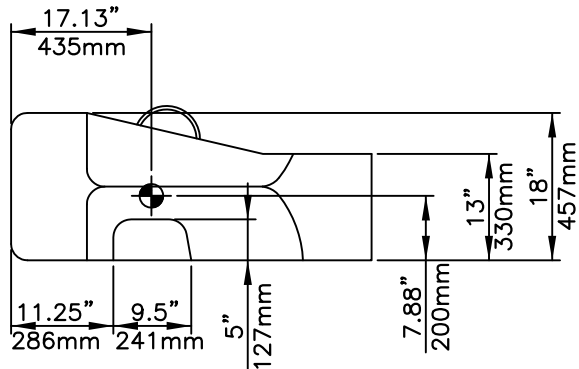
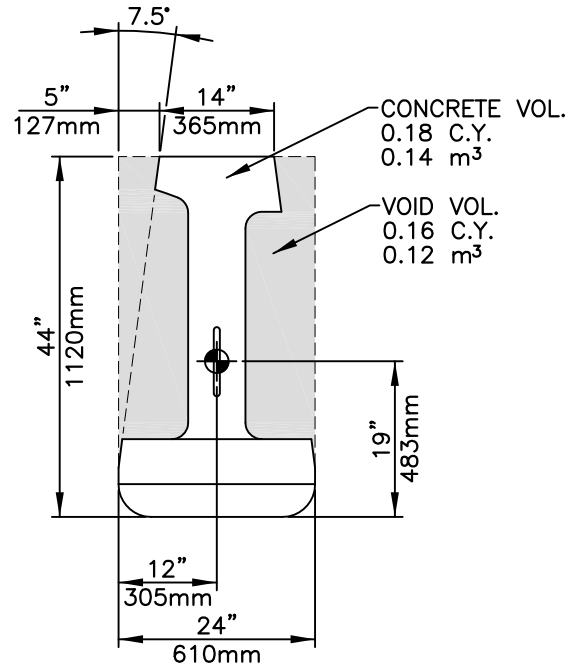
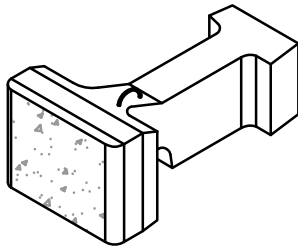
Block Wt.	1,500 lbs	680 kg
Form Wt.	1,800 lbs	815 kg
Concrete Volume	0.38 CY	0.29 m ³
Aggregate Infill	0.41 CY	0.31 m ³
(per face area)	0.1 tons/sf	1,000 kg/m ²



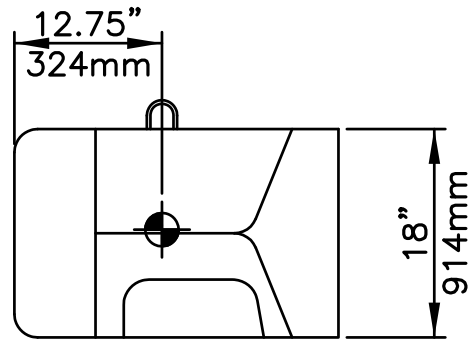
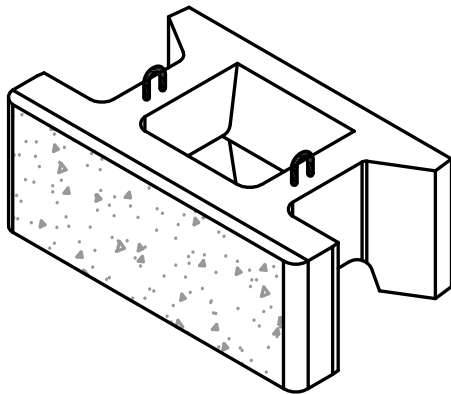
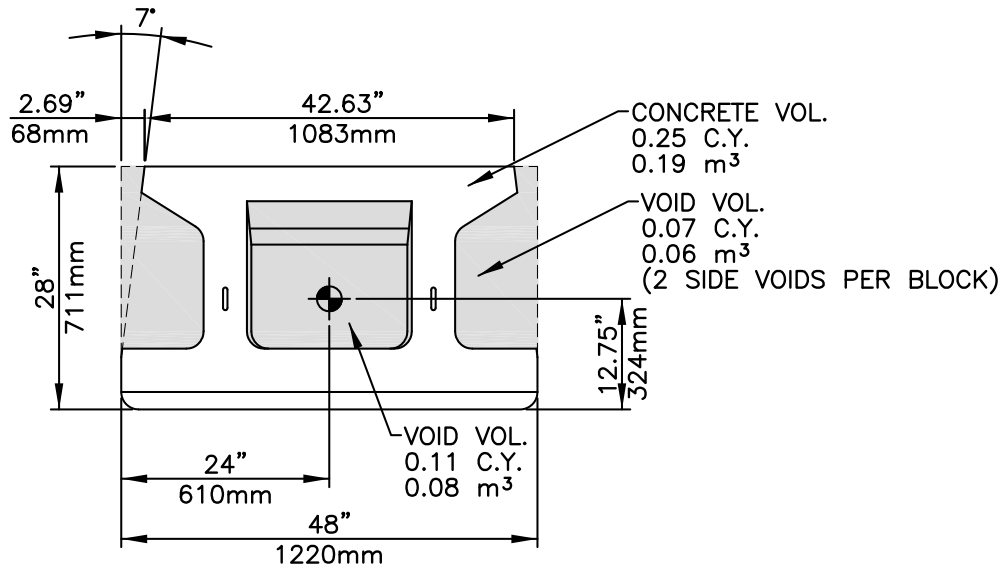
Block Wt.	1,400 lbs	635 kg
Form Wt.	1,955 lbs	885 kg
Concrete Volume	0.35 CY	0.27 m ³
Aggregate Infill (per face area)	0.30 CY 0.1 ton/sf	0.23 m ³ 1,000 kg/m ²



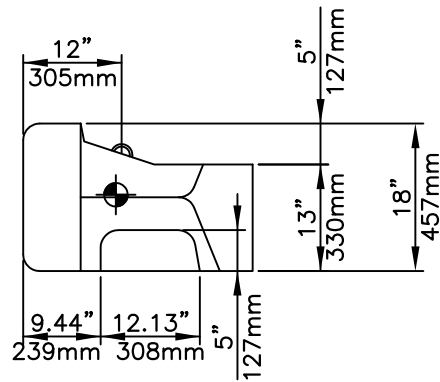
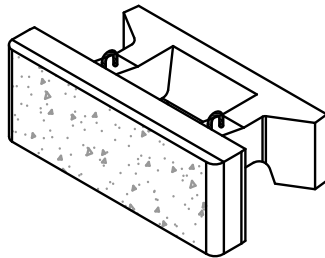
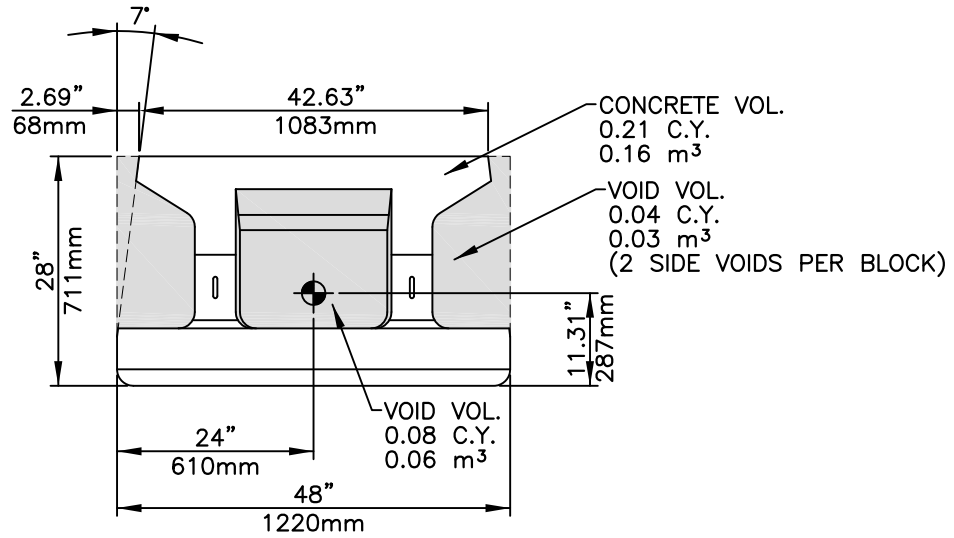
Block Wt.	740 lbs	355 kg
Form Wt.	1,820 lbs	825 kg
Concrete Volume	0.19 CY	0.15 m ³
Aggregate Infill	0.21 CY	0.16 m ³
(per face area)	.01 ton/sf	1,000 kg/m ²



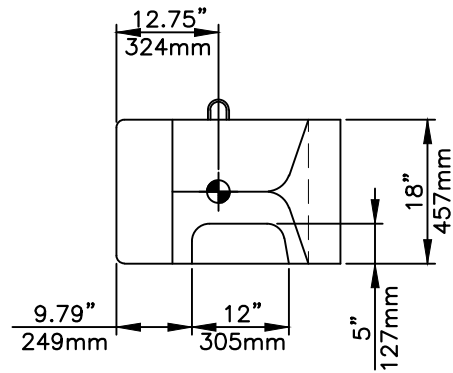
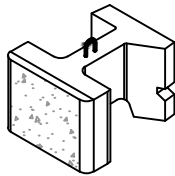
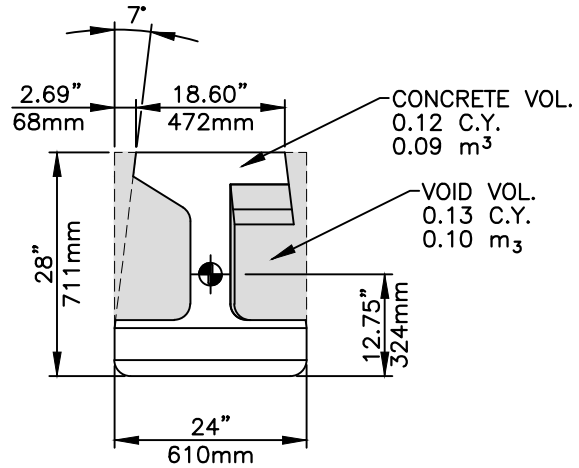
Block Wt.	690 lbs	310 kg
Form Wt.	1,975 lbs	895 kg
Concrete Volume	0.18 CY	0.14 m ³
Aggregate Infill (per face area)	0.16 CY .01 ton/sf	0.12 m ³ 1,000 kg/ m ²



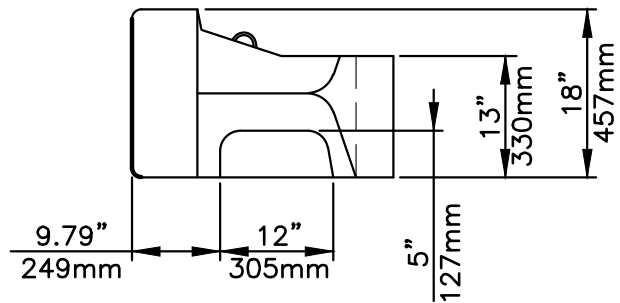
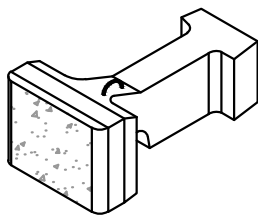
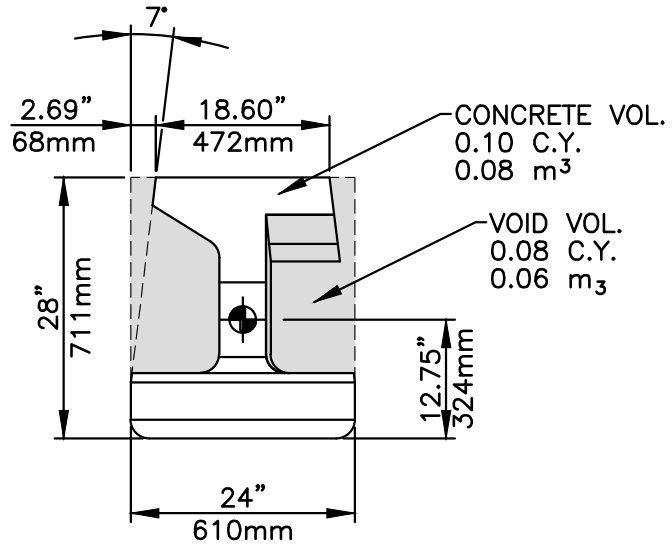
Block Wt.	950 lbs	430 kg
Form Wt.	1,500 lbs	680 kg
Concrete Volume	0.25 CY	0.19 m ³
Aggregate Infill	0.25 CY	0.19 m ³
(per face area)	0.07 tons/sf	700 kg/m ²



Block Wt.	840 lbs	380 kg
Form Wt.	1,580 lbs	715 kg
Concrete Volume	0.21 CY	0.16 m ³
Aggregate Infill (per face area)	0.16 CY 0.07 ton/sf	0.12 m ³ 700 kg/ m ²

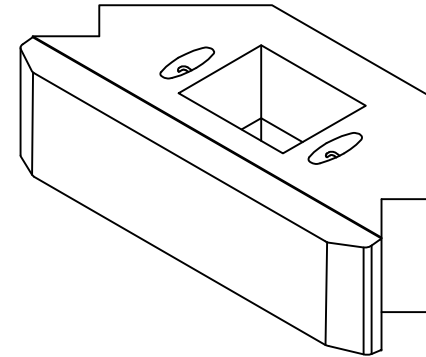


Block Wt.	465 lbs	210 kg
Form Wt.	1,520 lbs	690 kg
Concrete Volume	0.12 CY	0.09 m ³
Aggregate Infill	0.13 CY	0.10 m ³
(per face area)	.07 ton/sf	700 kg/m ²

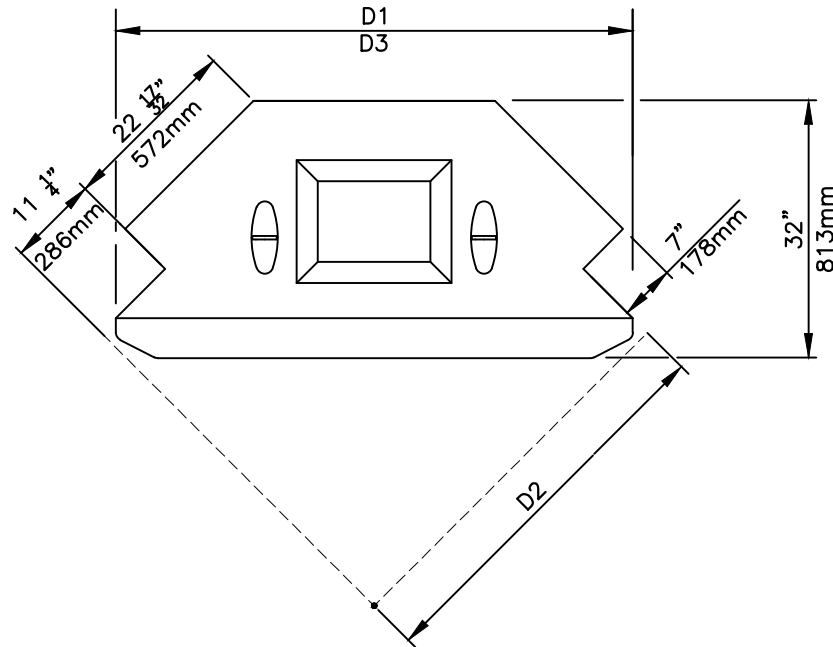


Block Wt.	410 lbs	185 kg
Form Wt.	1,975 lbs	725 kg
Concrete Volume	0.10 CY	0.08 m ³
Aggregate Infill (per face area)	0.08 CY .07 ton/sf	0.06 m ³ 700 kg/ m ²

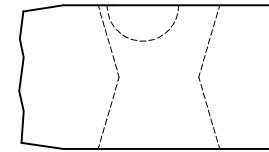
Block #	Liner #	D1	D2	D3	Weight
O1	A	75.5 in 1919 mm	56 in 1422 mm	75.5 in 1919 mm	2822 lbs 1280 kg
O2	B	69.9 in 1775 mm	52 in 1321 mm	69.9 in 1775 mm	2542 lbs 1153 kg
O3	C	64.2 in 1631 mm	48 in 1219 mm	64.2 in 1631 mm	2262 lbs 1026 kg
O4	D	58.6 in 1488 mm	44 in 1118 mm	58.6 in 1488 mm	1981 lbs 899 kg
O5	E	52.9 in 1344 mm	40 in 1016 mm	52.9 in 1344 mm	1700 lbs 771 kg
O6	F	47.3 in 1200 mm	36 in 914 mm	47.3 in 1200 mm	1420 lbs 644 kg



ISOMETRIC VIEW



PLAN VIEW
DIMENSIONS



END VIEW

STONE STRONG OUTSIDE CORNER UNIT

NOT TO SCALE

DISCLAIMER:

These typical details are preliminary and conceptual in nature. They are provided for general information purposes only. Anyone making use of these details and related information does so at their own risk and assumes all liability for such use. Site specific design should be performed by a licensed Professional Engineer based on actual site conditions, materials, and local practices.

Stone Strong LLC retains all common law, statutory, and other reserved rights to these drawings including the copyright. Limited license is granted to copy, reproduce, or modify the details to prepare construction drawings for Stone Strong retaining walls. Stone Strong LLC makes no warranties, either expressed or implied, of merchantability or fitness for any particular purpose, and accepts no responsibility for the accuracy, suitability, or completeness of information contained herein.



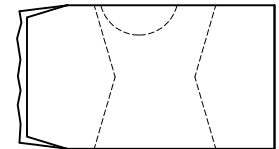
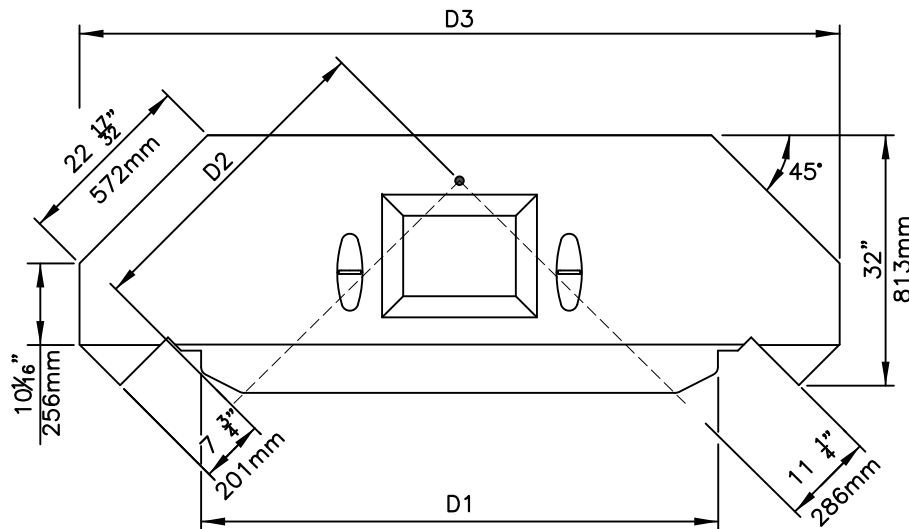
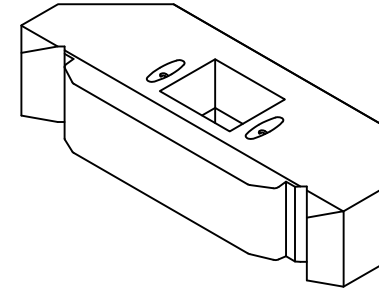
www.stonestrong.com

PROJECT

COMPONENTS
STONE STRONG SYSTEMS

DATE: 4/23/26 FILE: 16_Outside Corner Block

Block #	Liner #	D1	D2	D3	Weight
I1	F	47.3 in 1200 mm	28 in 711 mm	77.5 in 1969 mm	2904 lbs 1318 kg
I2	E	52.9 in 1344 mm	32 in 813 mm	83.2 in 2112 mm	3184 lbs 1445 kg
I3	D	58.6 in 1488 mm	36 in 914 mm	88.8 in 2256 mm	3465 lbs 1572 kg
I4	C	64.2 in 1631 mm	40 in 1016 mm	94.5 in 2400 mm	3746 lbs 1700 kg
I5	B	69.9 in 1775 mm	44 in 1118 mm	100.1 in 2543 mm	4026 lbs 1827 kg
I6	A	75.5 in 1919 mm	48 in 1219 mm	105.8 in 2687 mm	4307 lbs 1954 kg



PLAN VIEW
DIMENSIONS

END VIEW

STONE STRONG INSIDE CORNER UNIT

NOT TO SCALE

DISCLAIMER:

These typical details are preliminary and conceptual in nature. They are provided for general information purposes only. Anyone making use of these details and related information does so at their own risk and assumes all liability for such use. Site specific design should be performed by a licensed Professional Engineer based on actual site conditions, materials, and local practices.

Stone Strong LLC retains all common law, statutory, and other reserved rights to these drawings including the copyright. Limited license is granted to copy, reproduce, or modify the details to prepare construction drawings for Stone Strong retaining walls. Stone Strong LLC makes no warranties, either expressed or implied, of merchantability or fitness for any particular purpose, and accepts no responsibility for the accuracy, suitability, or completeness of information contained herein.



www.stonestrong.com

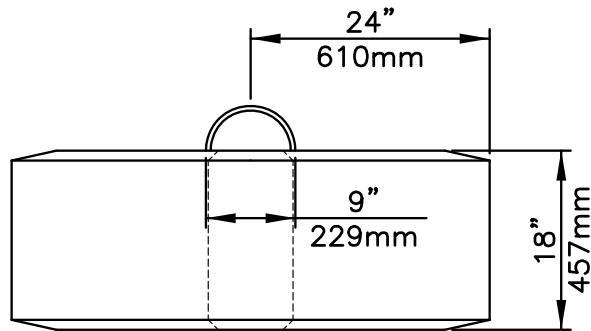
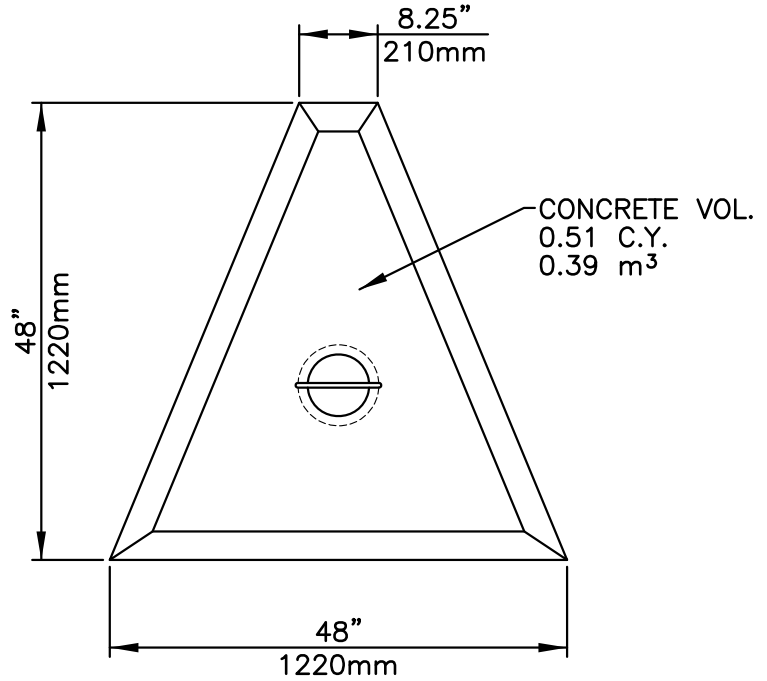
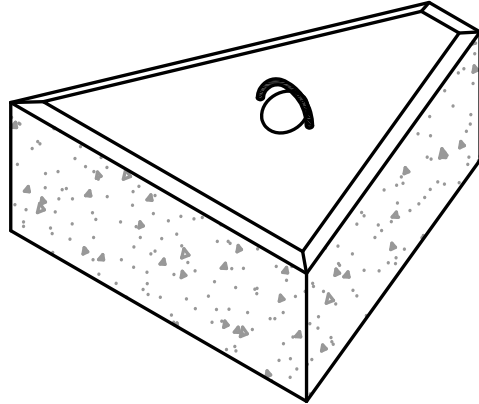
PROJECT

COMPONENTS
STONE STRONG SYSTEMS

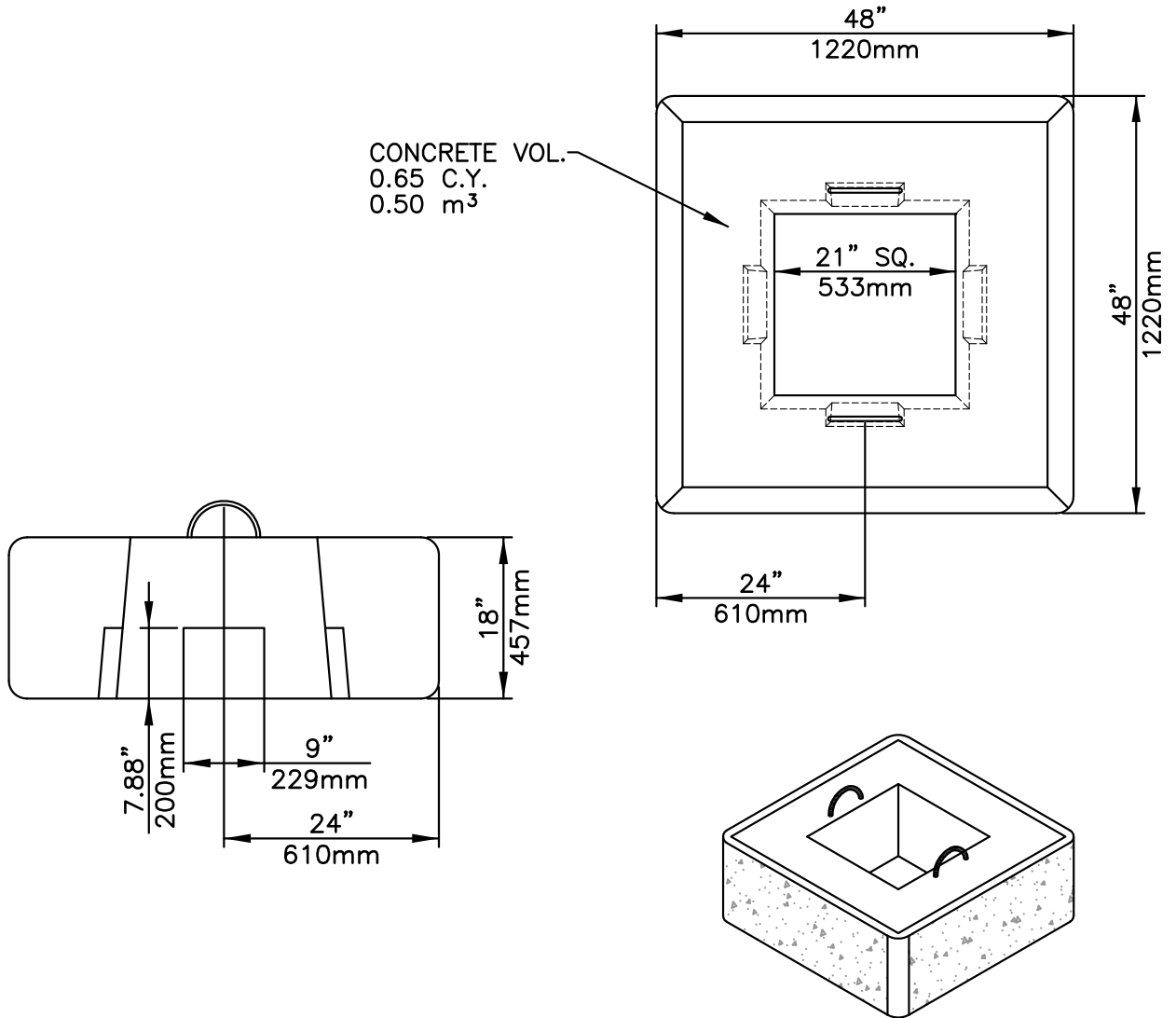
DATE: 4/29/26 | FILE: 18_Inside Corner Block

SYSTEM COMPONENTS

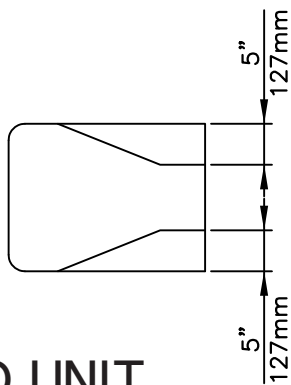
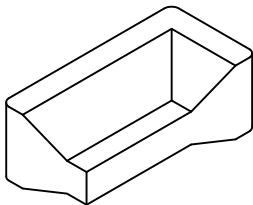
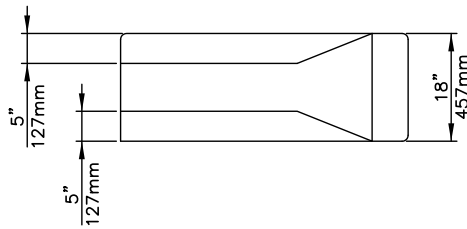
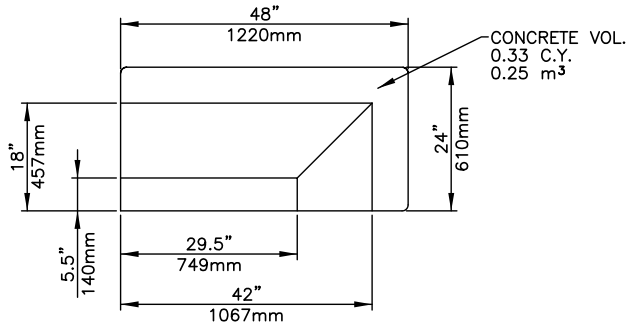
45° CORNER BLOCK



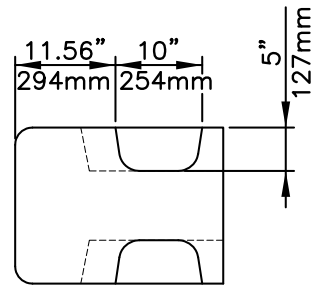
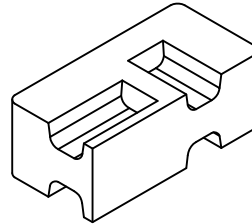
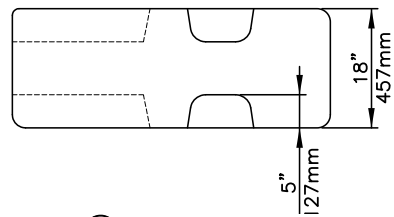
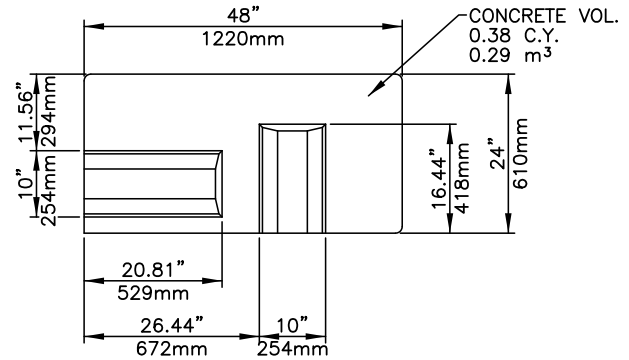
Block Wt.	2,040 lbs	925 kg
Form Wt.	3,325 lbs	1,510 kg
Concrete Volume	0.51 CY	0.39 m ³



Block Wt.	2,600 lbs	1,180 kg
Form Wt.	2,455 lbs	1,115 kg
Concrete Volume	0.65 CY	0.50 m ³



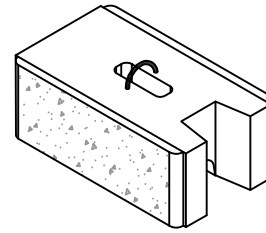
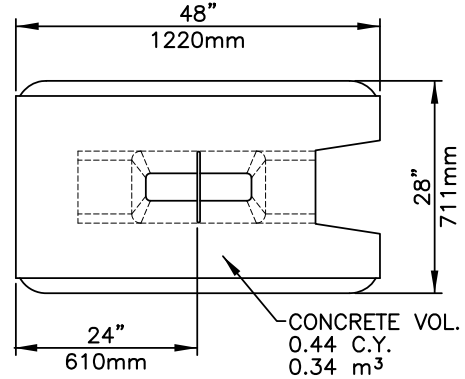
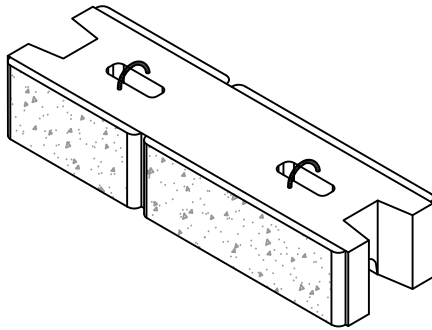
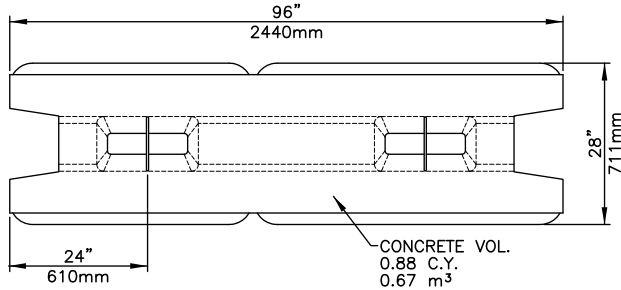
END UNIT



CORNER UNIT

Block Wt.	1,300 lbs	590 kg
Form Wt.	1,650 lbs	750 kg
Concrete Volume	0.33 CY	0.25 m³

Block Wt.	1,500 lbs	680 kg
Form Wt.	1,490 lbs	675 kg
Concrete Volume	0.38 CY	0.29 m³

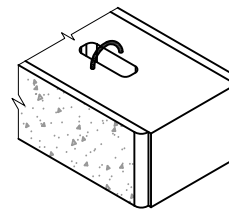
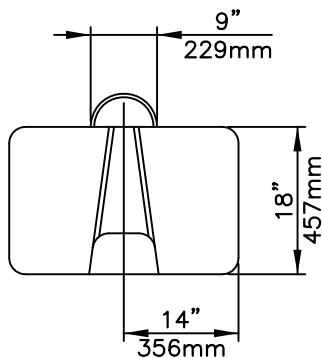


DUAL FACE UNIT

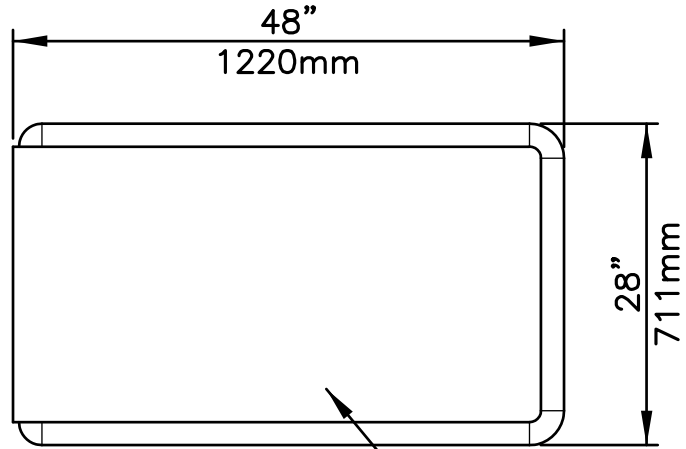
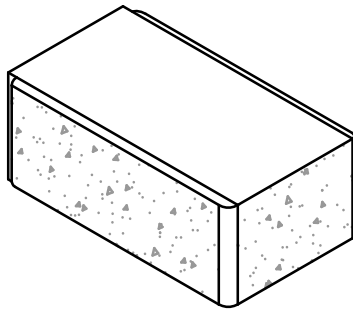
Block Wt.	3,520 lbs	1,595 kg
Form Wt.	2,430 lbs	1,100 kg
Concrete Volume	0.88 CY	0.67 m ³

DUAL FACE HALF UNIT

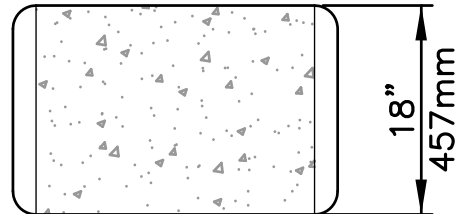
Block Wt.	1,760 lbs	800 kg
Form Wt.	2,430 lbs	1,100 kg
Concrete Volume	0.44 CY	0.34 m ³



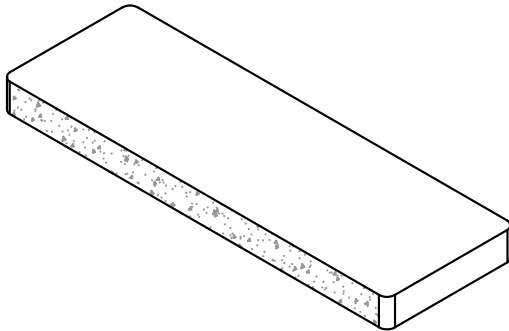
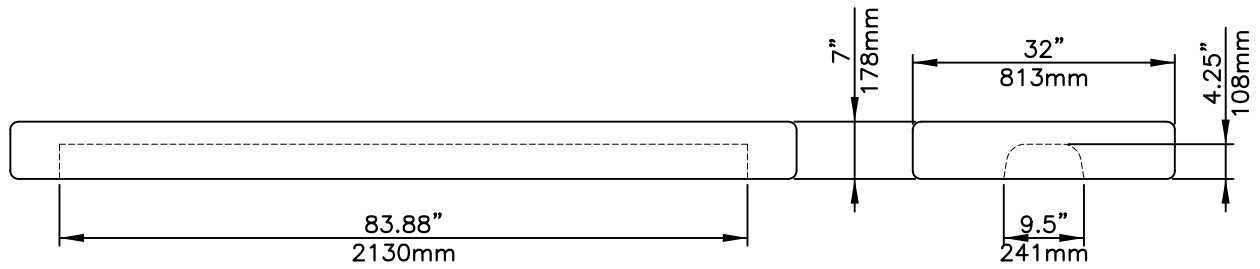
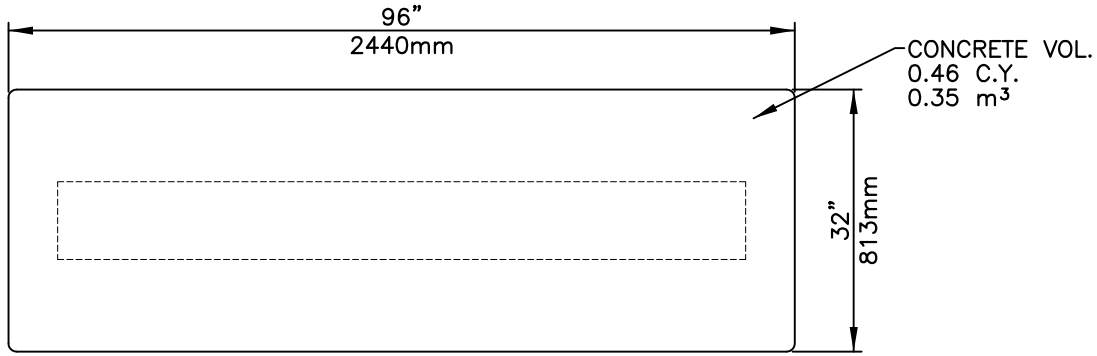
ALTERNATE FINISHED END


TOP VIEW

CONCRETE VOL.
0.53 C.Y.
0.41 m³


END VIEW

Block Wt.	2,150 lbs	975 kg
Form Wt.	1,889 lbs	857 kg
Concrete Volume	0.53 CY	0.41 m ³



Block Wt.	1,800 lbs	815 kg
Form Wt.	1,425 lbs	645 kg
Concrete Volume	0.46 CY	0.35 m ³